

In this 3D model, facets appear as semi-transparent to reveal overhangs.

## PREPARED FOR

Contact: Tony Tompkins  
 Company: ABC Supply Co.  
 Address: 5130 Industrial St  
 Maple Plain, MN 55359-8004  
 Phone: 763-479-2966

## TABLE OF CONTENTS

Images .....	1
Length Diagram .....	4
Pitch Diagram .....	5
Area Diagram .....	6
Notes Diagram .....	7
Penetrations Diagram .....	8
Report Summary .....	9

## MEASUREMENTS

Total Roof Area = 6,656 sq ft  
 Total Roof Facets = 25  
 Predominant Pitch = 8/12  
 Number of Stories > 1  
 Total Ridges/Hips = 210 ft  
 Total Valleys = 234 ft  
 Total Rakes = 328 ft  
 Total Eaves = 319 ft  
 Total Penetrations = 41  
 Total Penetrations Perimeter = 214 ft  
 Total Penetrations Area = 74 sq ft

Measurements provided by [www.eagleview.com](http://www.eagleview.com)



**Certified Accurate**

[www.eagleview.com/Guarantee.aspx](http://www.eagleview.com/Guarantee.aspx)

10881 Oak Grove Cir, Woodbury, MN 55129-8758

Report: 26605912

## IMAGES

The following aerial images show different angles of this structure for your reference.

Top View



10881 Oak Grove Cir, Woodbury, MN 55129-8758

Report: 26605912

## IMAGES

North Side



South Side



10881 Oak Grove Cir, Woodbury, MN 55129-8758

Report: 26605912

## IMAGES

East Side

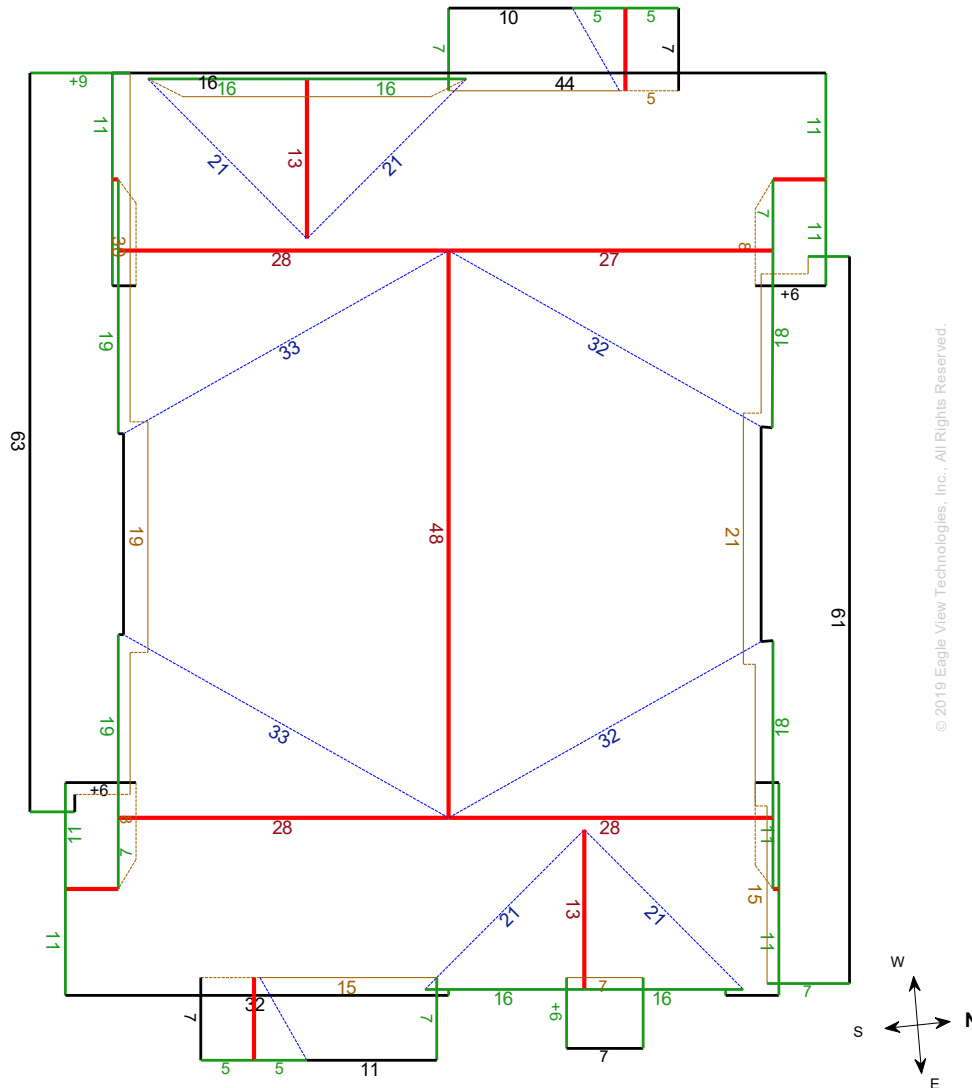


West Side



# LENGTH DIAGRAM

Total Line Lengths:

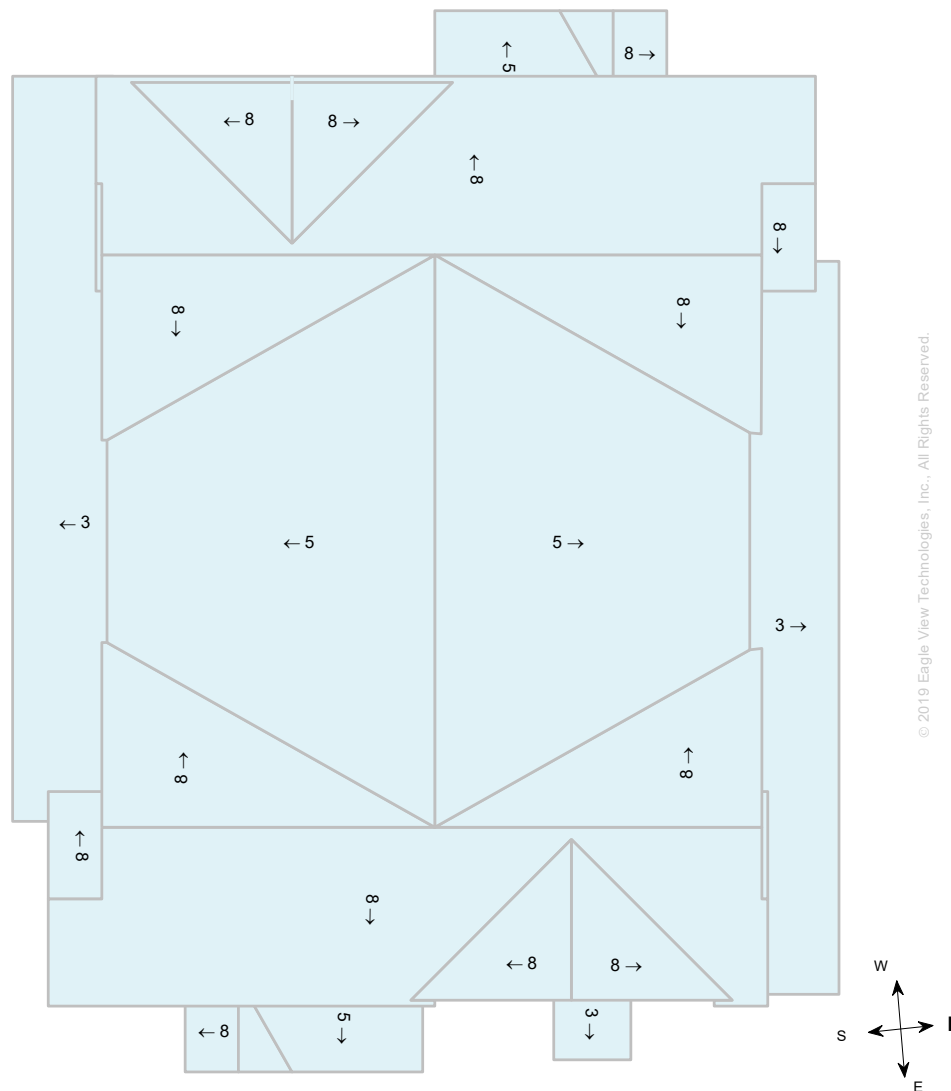
**Ridges = 210 ft**
**Hips = 0 ft**
**Valleys = 234 ft**
**Rakes = 328 ft**
**Eaves = 319 ft**
**Flashing = 183 ft**
**Step flashing = 80 ft**
**Parapets = 0 ft**


© 2019 Eagle View Technologies, Inc., All Rights Reserved.

**Note:** This diagram contains segment lengths (rounded to the nearest whole number) over 5.0 Feet. In some cases, segment labels have been removed for readability. Plus signs preface some numbers to avoid confusion when rotated (e.g. +6 and +9).

# PITCH DIAGRAM

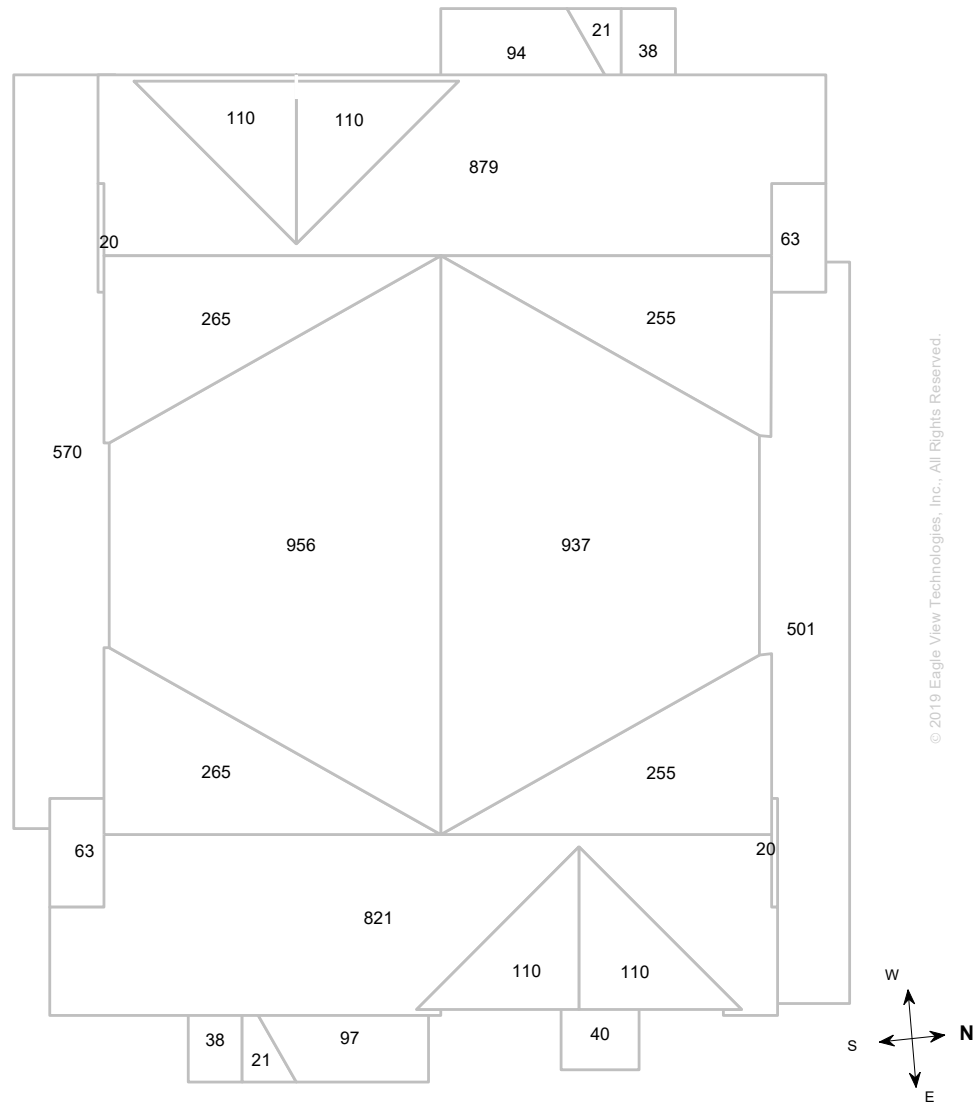
Pitch values are shown in inches per foot, and arrows indicate slope direction. The predominant pitch on this roof is 8/12



Note: This diagram contains labeled pitches for facet areas larger than 20.0 square feet. In some cases, pitch labels have been removed for readability. Blue shading indicates a pitch of 3/12 and greater.

# AREA DIAGRAM

Total Area = 6,656 sq ft, with 25 facets.

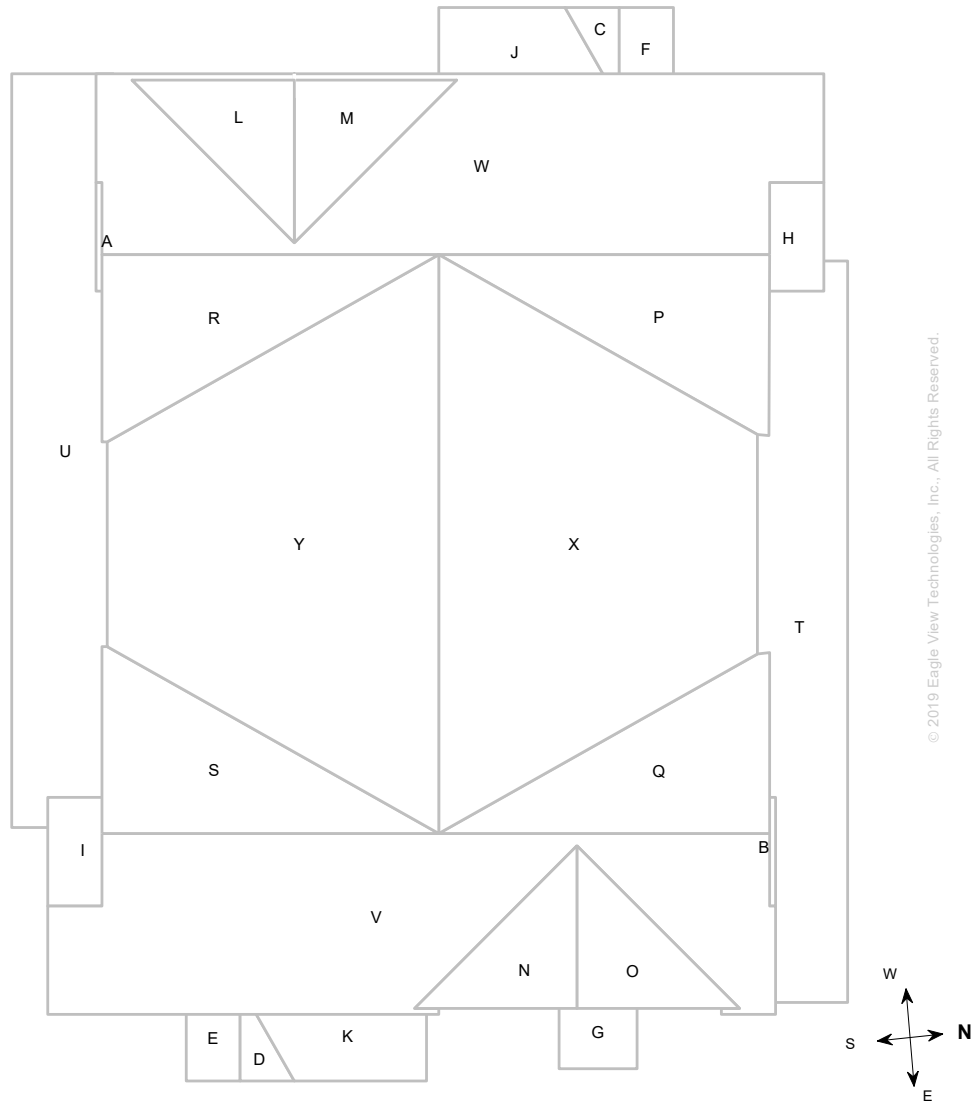


© 2019 Eagle View Technologies, Inc., All Rights Reserved.

**Note:** This diagram shows the square feet of each roof facet (rounded to the nearest Foot). The total area in square feet, at the top of this page, is based on the non-rounded values of each roof facet (rounded to the nearest square foot after being totaled).

# NOTES DIAGRAM

Roof facets are labeled from smallest to largest (A to Z) for easy reference.



© 2019 Eagle View Technologies, Inc. All Rights Reserved.



# PENETRATIONS NOTES DIAGRAM

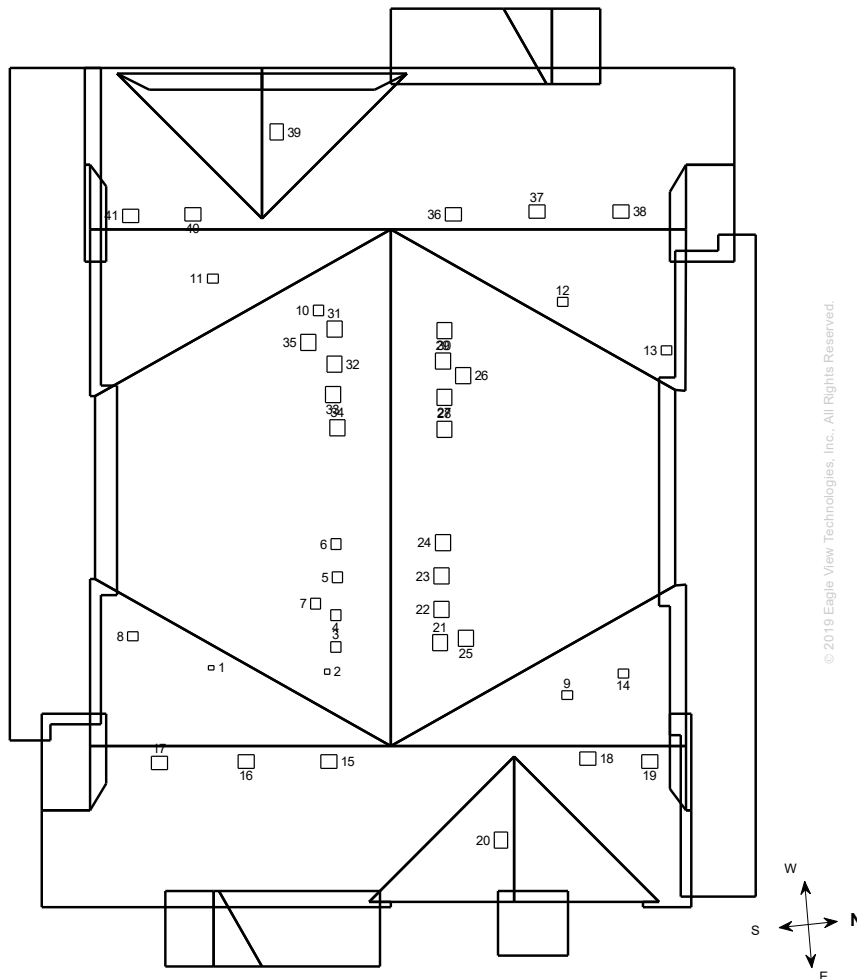
Penetrations are labeled from smallest to largest for easy reference.

Total Penetrations = 41

Total Penetrations Area = 74 sq ft

Total Penetrations Perimeter = 214 ft

Total Roof Area Less Penetrations = 6,582 sq ft



© 2019 Eagle View Technologies, Inc. All Rights Reserved.

## REPORT SUMMARY

### Areas per Pitch

Roof Pitches	3/12	5/12	8/12
Area (sq ft)	1111.2	2084.1	3461.1
% of Roof	16.7%	31.3%	52%

The table above lists each pitch on this roof and the total area and percent (both rounded) of the roof with that pitch.

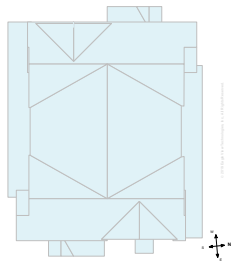
### Waste Calculation Table

Waste %	0%	10%	12%	15%	17%	20%	22%
Area (sq ft)	6,656	7,322	7,455	7,654	7,788	7,987	8,120
Squares	66.6	73.2	74.5	76.5	77.9	79.9	81.2

This table shows the total roof area and squares (rounded up to the nearest decimal) based upon different waste percentages. The waste factor is subject to the complexity of the roof, individual roofing techniques and your experience. Please consider this when calculating appropriate waste percentages. Note that only roof area is included in these waste calculations. Additional materials needed for ridge, hip, valley, and starter lengths are not included.

Penetrations	1-2	3-14	15-28	29-41					
Area (sq ft)	0.2	1	2.2	2.3					
Perimeter (ft)	2	4	6	6					

Any measured penetration smaller than 3.0x3.0 Feet may need field verification. Accuracy is not guaranteed. The total penetration area is not subtracted from the total roof area.



Total Roof Facets = 25  
 Total Penetrations = 41

### Lengths, Areas and Pitches

Ridges = 210 ft (13 Ridges)  
 Hips = 0 ft (0 Hips).  
 Valleys = 234 ft (10 Valleys)  
 Rakes\* = 328 ft (34 Rakes)  
 Eaves/Starter\*\* = 319 ft (22 Eaves)  
 Drip Edge (Eaves + Rakes) = 647 ft (56 Lengths)  
 Parapet Walls = 0 (0 Lengths).  
 Flashing = 183 ft (15 Lengths)  
 Step flashing = 80 ft (21 Lengths)  
 Total Area = 6,656 sq ft  
 Total Penetrations Area = 74 sq ft  
 Total Roof Area Less Penetrations = 6,582 sq ft  
 Total Penetrations Perimeter = 214 ft  
 Predominant Pitch = 8/12

### Property Location

Longitude = -92.8858927  
 Latitude = 44.8926852

### Notes

This was ordered as a commercial property. There were no changes to the structure in the past four years.

\* Rakes are defined as roof edges that are sloped (not level).  
 \*\* Eaves are defined as roof edges that are not sloped and level.

10881 Oak Grove Cir, Woodbury, MN 55129-8758

Report: 26605912

**Online Maps**

Online map of property

[http://maps.google.com/maps?f=g&source=s\\_q&hl=en&geocode=&q=10881+Oak+Grove+Cir,Woodbury,MN,55129-8758](http://maps.google.com/maps?f=g&source=s_q&hl=en&geocode=&q=10881+Oak+Grove+Cir,Woodbury,MN,55129-8758)

Directions from ABC Supply Co. to this property

[http://maps.google.com/maps?f=d&source=s\\_d&saddr=5130+Industrial+St,Maple+Plain,MN,55359-8004&daddr=10881+Oak+Grove+Cir,Woodbury,MN,55129-8758](http://maps.google.com/maps?f=d&source=s_d&saddr=5130+Industrial+St,Maple+Plain,MN,55359-8004&daddr=10881+Oak+Grove+Cir,Woodbury,MN,55129-8758)