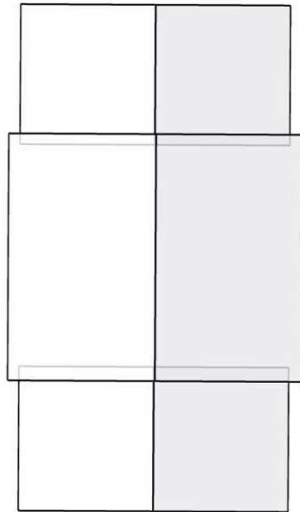


1574 Sunny Way Ct, Anoka, MN 55303-1384

Report: 29759456



In this 3D model, facets appear as semi-transparent to reveal overhangs.

PREPARED FOR

Contact:	Tony Tompkins
Company:	ABC Supply Co.
Address:	5130 Industrial St Maple Plain, MN 55359-8004
Phone:	763-479-2966

TABLE OF CONTENTS

Images	1
Length Diagram	4
Pitch Diagram	5
Area Diagram	6
Notes Diagram	7
Penetrations Diagram	8
Report Summary	9

MEASUREMENTS

Total Roof Area = 5,131 sq ft
 Total Roof Facets = 6
 Predominant Pitch = 4/12
 Number of Stories > 1
 Total Ridges/Hips = 97 ft
 Total Valleys = 0 ft
 Total Rakes = 215 ft
 Total Eaves = 193 ft
 Total Penetrations = 33
 Total Penetrations Perimeter = 154 ft
 Total Penetrations Area = 47 sq ft

Measurements provided by www.eagleview.com



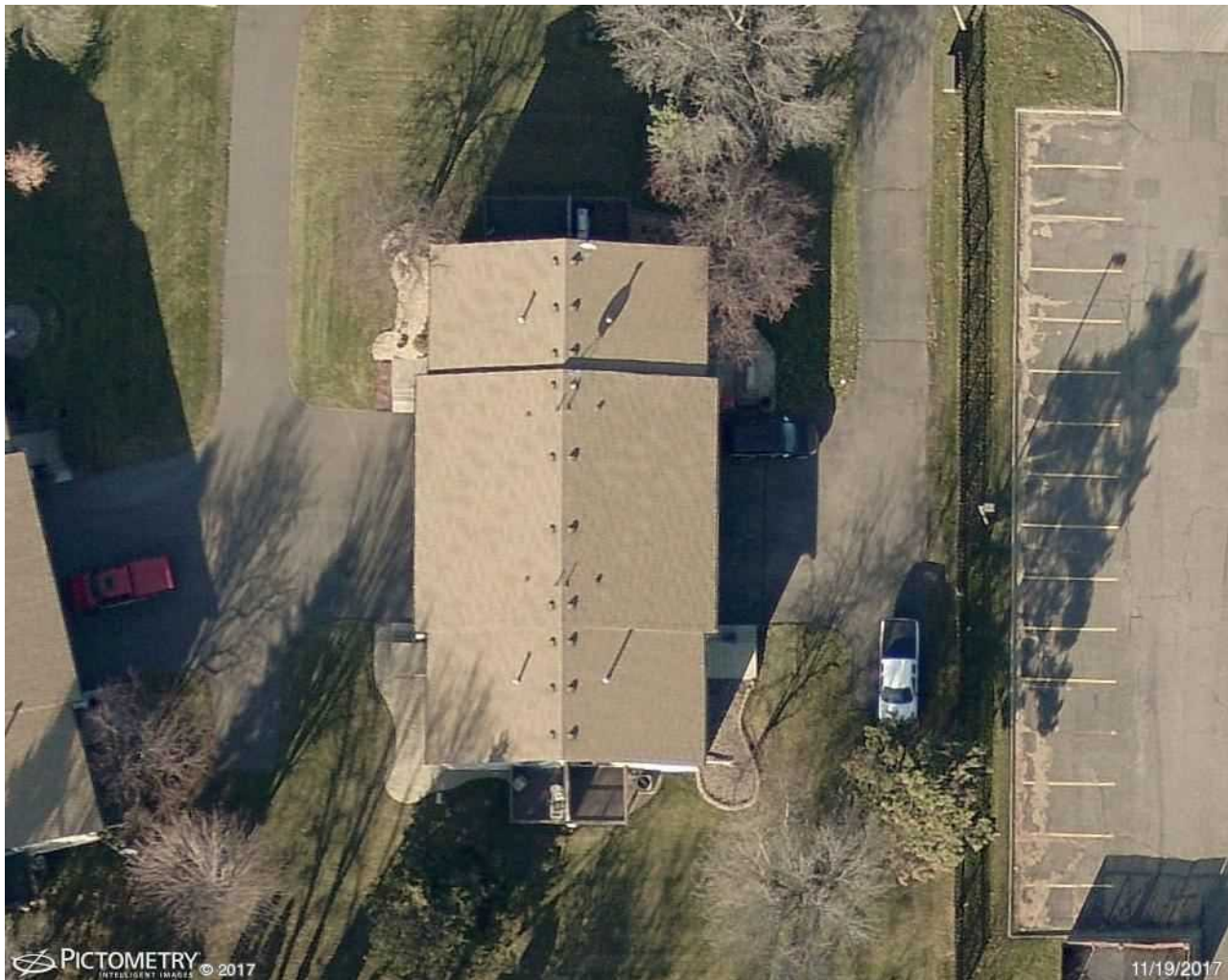
Certified Accurate

www.eagleview.com/Guarantee.aspx

IMAGES

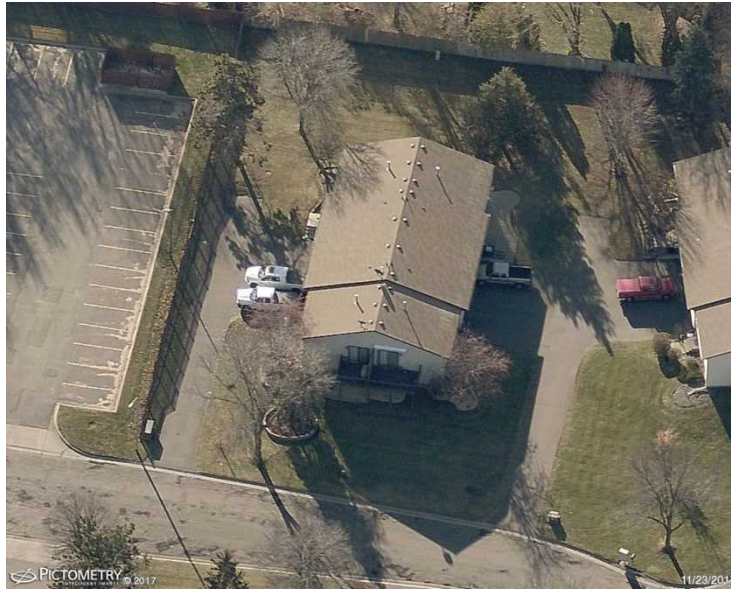
The following aerial images show different angles of this structure for your reference.

Top View

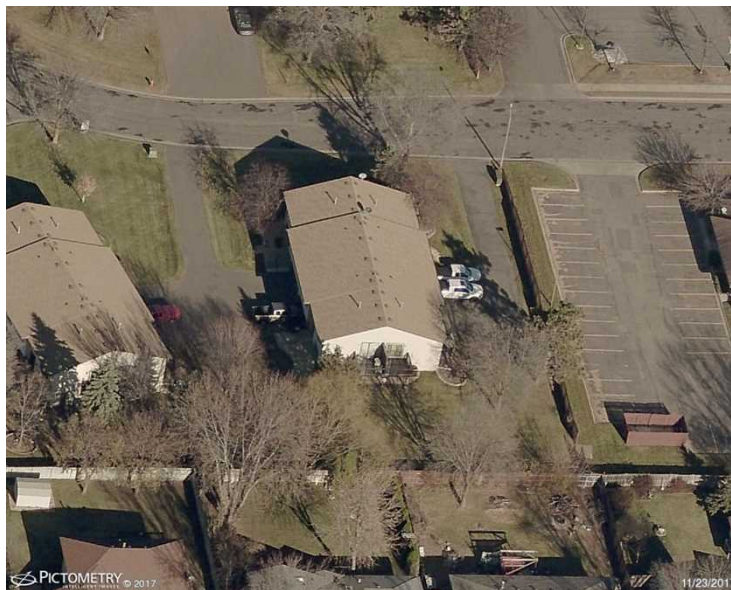


IMAGES

North Side

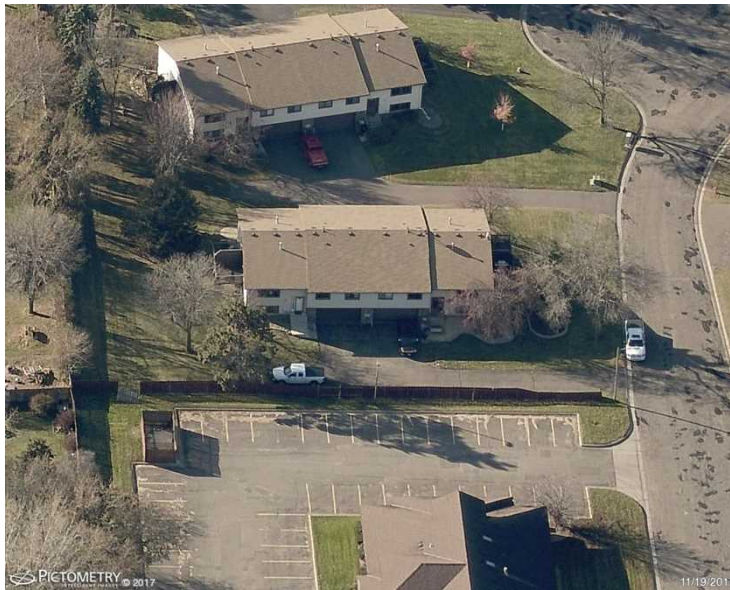


South Side

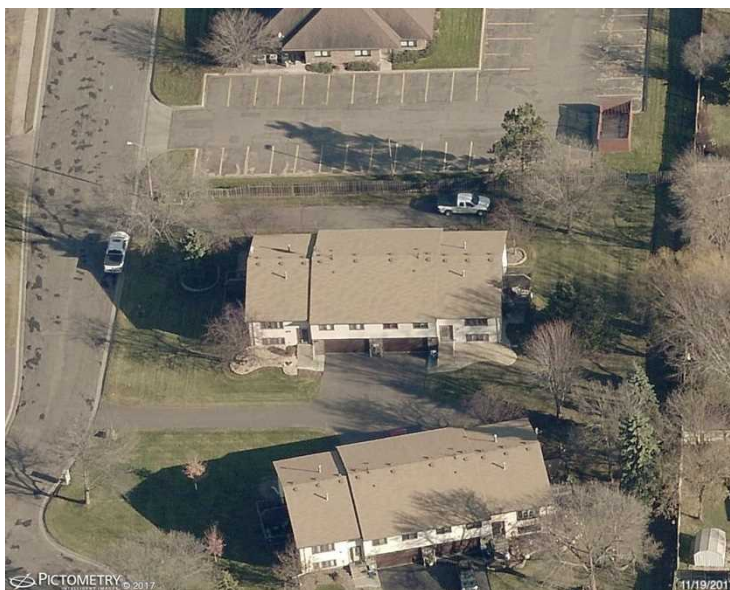


IMAGES

East Side

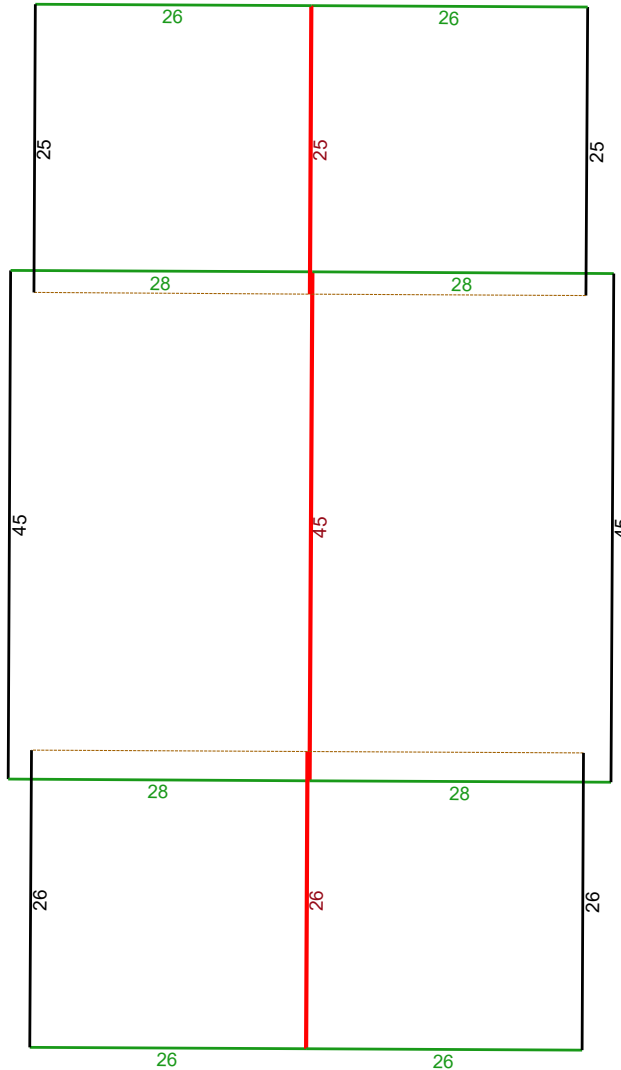


West Side

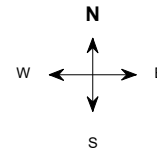


LENGTH DIAGRAM

Total Line Lengths:

Ridges = 97 ft
Hips = 0 ft
Valleys = 0 ft
Rakes = 215 ft
Eaves = 193 ft
Flashing = 0 ft
Step flashing = 103 ft
Parapets = 0 ft


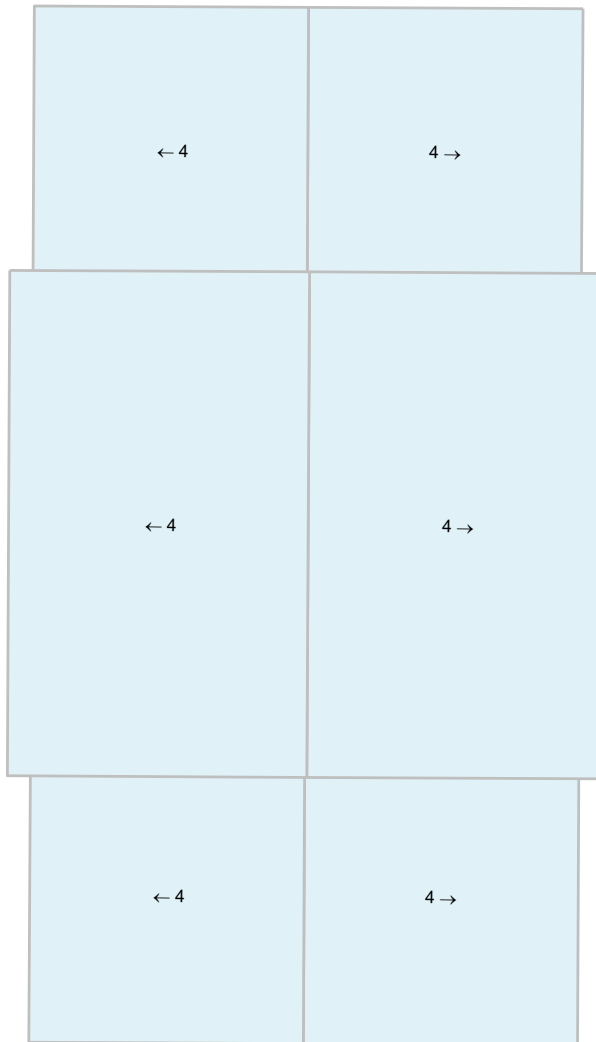
© 2019 Eagle View Technologies, Inc., All Rights Reserved.



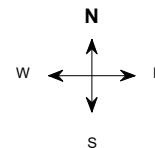
Note: This diagram contains segment lengths (rounded to the nearest whole number) over 5.0 Feet. In some cases, segment labels have been removed for readability. Plus signs preface some numbers to avoid confusion when rotated (e.g. +6 and +9).

PITCH DIAGRAM

Pitch values are shown in inches per foot, and arrows indicate slope direction. The predominant pitch on this roof is 4/12



© 2019 Eagle View Technologies, Inc., All Rights Reserved.



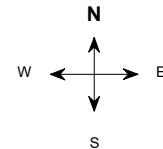
Note: This diagram contains labeled pitches for facet areas larger than 20.0 square feet. In some cases, pitch labels have been removed for readability. Blue shading indicates a pitch of 3/12 and greater.

AREA DIAGRAM

Total Area = 5,131 sq ft, with 6 facets.



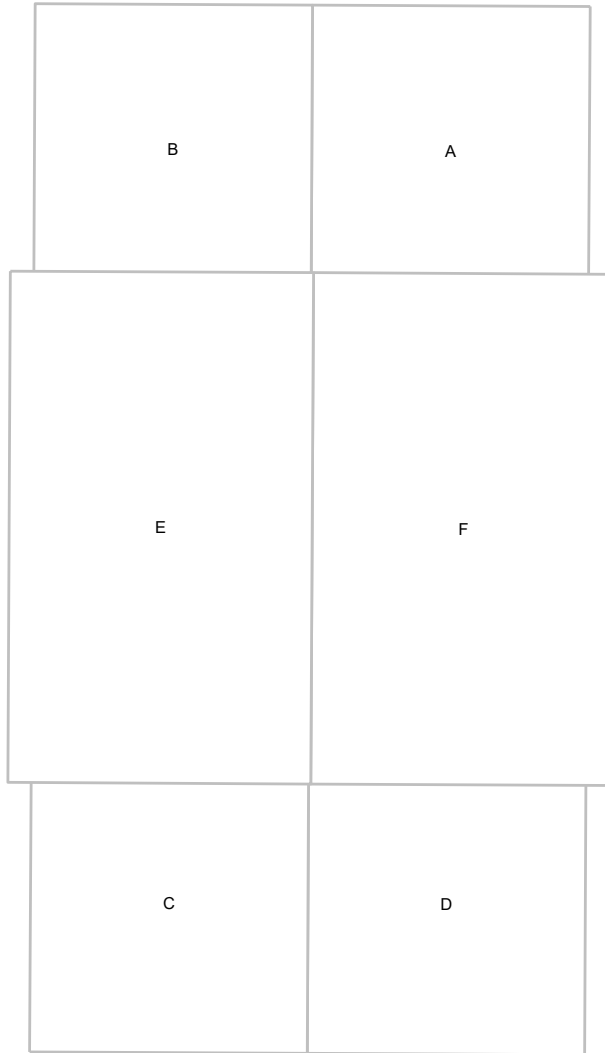
© 2019 Eagle View Technologies, Inc., All Rights Reserved.



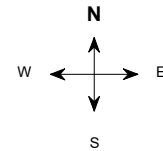
Note: This diagram shows the square feet of each roof facet (rounded to the nearest Foot). The total area in square feet, at the top of this page, is based on the non-rounded values of each roof facet (rounded to the nearest square foot after being totaled).

NOTES DIAGRAM

Roof facets are labeled from smallest to largest (A to Z) for easy reference.



© 2019 Eagle View Technologies, Inc., All Rights Reserved.



PENETRATIONS NOTES DIAGRAM

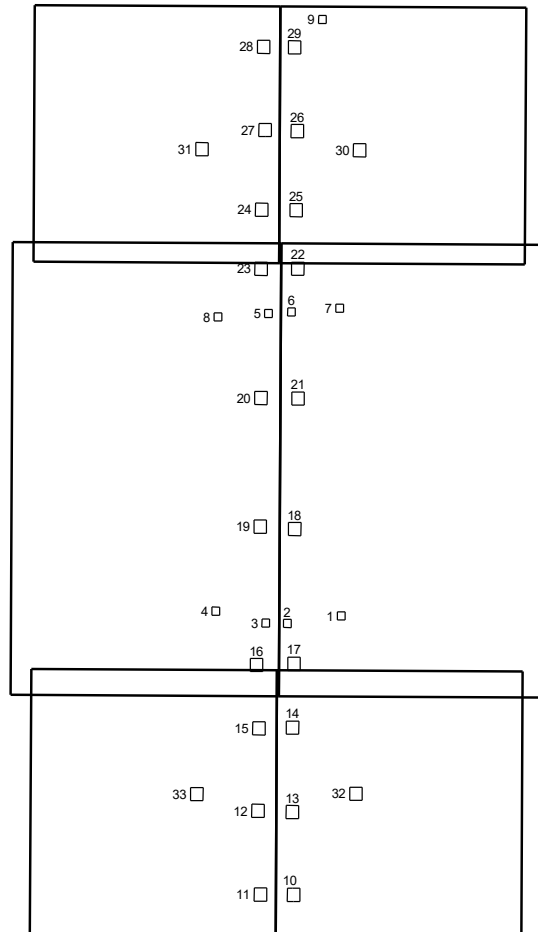
Penetrations are labeled from smallest to largest for easy reference.

Total Penetrations = 33

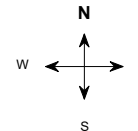
Total Penetrations Area = 47 sq ft

Total Penetrations Perimeter = 154 ft

Total Roof Area Less Penetrations = 5,084 sq ft



© 2019 Eagle View Technologies, Inc., All Rights Reserved.



REPORT SUMMARY

All Structures

Areas per Pitch

Roof Pitches	4/12
Area (sq ft)	5130.2
% of Roof	100%

The table above lists each pitch on this roof and the total area and percent (both rounded) of the roof with that pitch.

Waste Calculation Table

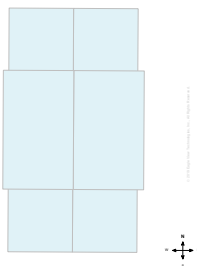
Waste %	0%	10%	12%	15%	17%	20%	22%
Area (sq ft)	5,131	5,644	5,747	5,901	6,003	6,157	6,260
Squares	51.3	56.4	57.5	59.0	60.0	61.6	62.6

This table shows the total roof area and squares (rounded up to the nearest decimal) based upon different waste percentages. The waste factor is subject to the complexity of the roof, individual roofing techniques and your experience. Please consider this when calculating appropriate waste percentages. Note that only roof area is included in these waste calculations. Additional materials needed for ridge, hip, valley, and starter lengths are not included.

Penetrations	1-9	10	11	12-33					
Area (sq ft)	0.6	1.7	1.7	1.7					
Perimeter (ft)	3.2	5.1	5.2	5.2					

Any measured penetration smaller than 3.0x3.0 Feet may need field verification. Accuracy is not guaranteed. The total penetration area is not subtracted from the total roof area.

All Structures Totals



Total Roof Facets = 6
 Total Penetrations = 33

Lengths, Areas and Pitches

Ridges = 97 ft (3 Ridges)
 Hips = 0 ft (0 Hips)
 Valleys = 0 ft (0 Valleys)
 Rakes† = 215 ft (8 Rakes)
 Eaves/Starter‡ = 193 ft (6 Eaves)
 Drip Edge (Eaves + Rakes) = 408 ft (14 Lengths)
 Parapet Walls = 0 (0 Lengths)
 Flashing = 0 ft (0 Lengths)
 Step flashing = 103 ft (4 Lengths)
 Total Area = 5,131 sq ft
 Total Penetrations Area = 47 sq ft
 Total Roof Area Less Penetrations = 5,084 sq ft
 Total Penetrations Perimeter = 154 ft
 Predominant Pitch = 4/12

Property Location

Longitude = -93.3588805
 Latitude = 45.2162231

Notes

This was ordered as a commercial property. There were no changes to the structure in the past four years.

† Rakes are defined as roof edges that are sloped (not level).
 ‡ Eaves are defined as roof edges that are not sloped and level.

1574 Sunny Way Ct, Anoka, MN 55303-1384

Report: 29759456

Online Maps

Online map of property

http://maps.google.com/maps?f=q&source=s_q&hl=en&geocode=&q=1574+Sunny+Way+Ct,Anoka,MN,55303-1384

Directions from ABC Supply Co. to this property

http://maps.google.com/maps?f=d&source=s_d&saddr=5130+Industrial+St,Maple+Plain,MN,55359-8004&daddr=1574+Sunny+Way+Ct,Anoka,MN,55303-1384