

In this 3D model, facets appear as semi-transparent to reveal overhangs.

PREPARED FOR

Contact: Tony Tompkins
Company: ABC Supply Co.
Address: 5130 Industrial St
 Maple Plain, MN 55359-8004
Phone: 763-479-2966

TABLE OF CONTENTS

Images	1
Length Diagram	4
Pitch Diagram	5
Area Diagram	6
Notes Diagram	7
Penetrations Diagram	8
Report Summary	9

MEASUREMENTS

Total Roof Area = 4,371 sq ft
 Total Roof Facets = 6
 Predominant Pitch = 4/12
 Number of Stories <= 1
 Total Ridges/Hips = 107 ft
 Total Valleys = 67 ft
 Total Rakes = 204 ft
 Total Eaves = 128 ft
 Total Penetrations = 53
 Total Penetrations Perimeter = 308 ft
 Total Penetrations Area = 137 sq ft

Measurements provided by www.eagleview.com



Certified Accurate

www.eagleview.com/Guarantee.aspx

IMAGES

The following aerial images show different angles of this structure for your reference.

Top View

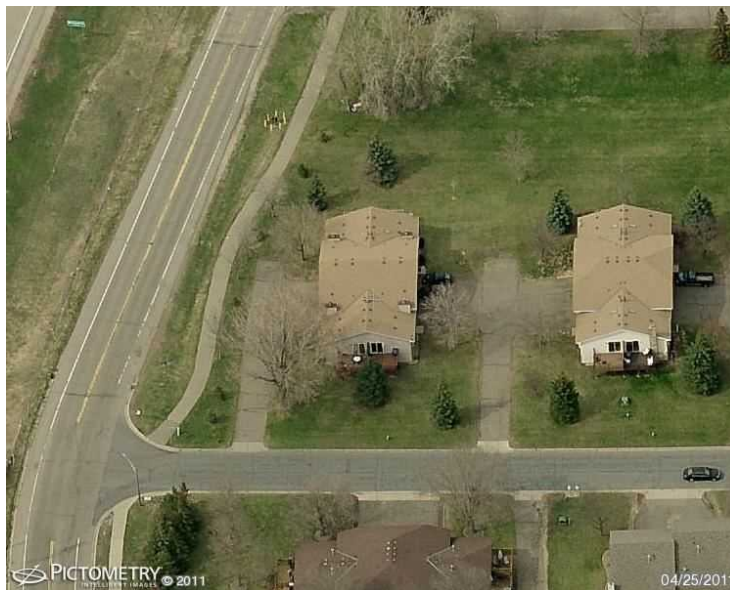


IMAGES

North Side

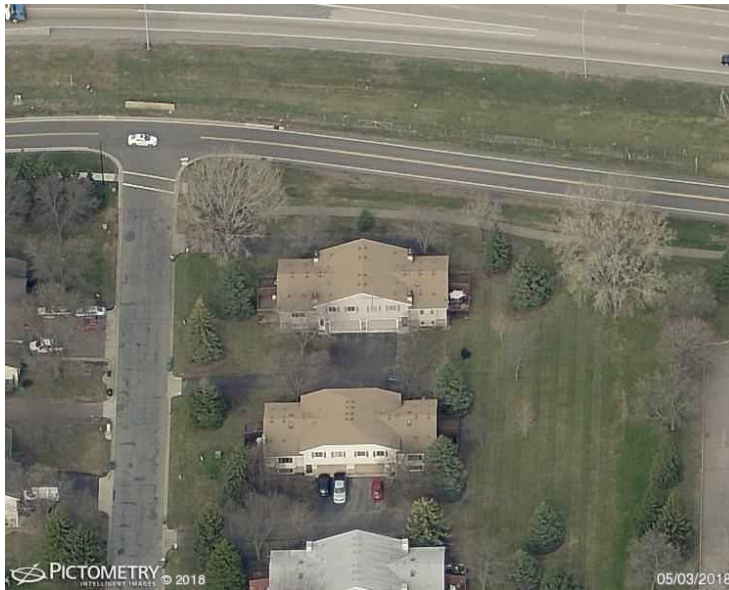


South Side

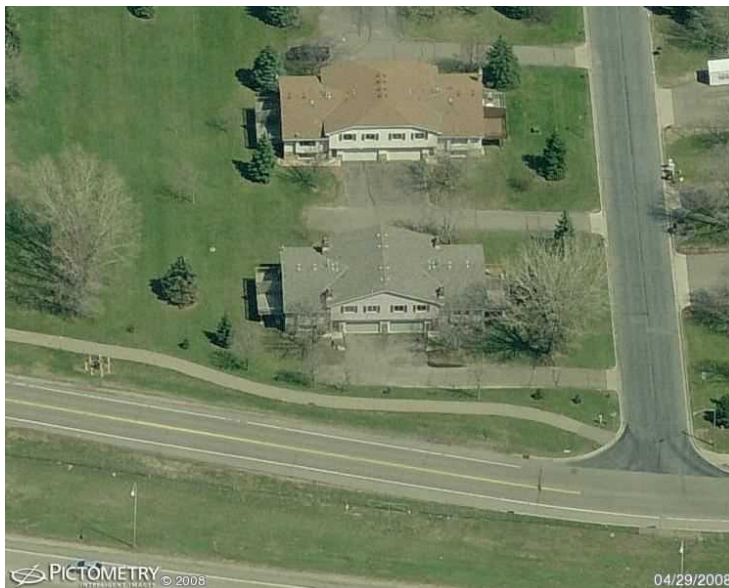


IMAGES

East Side

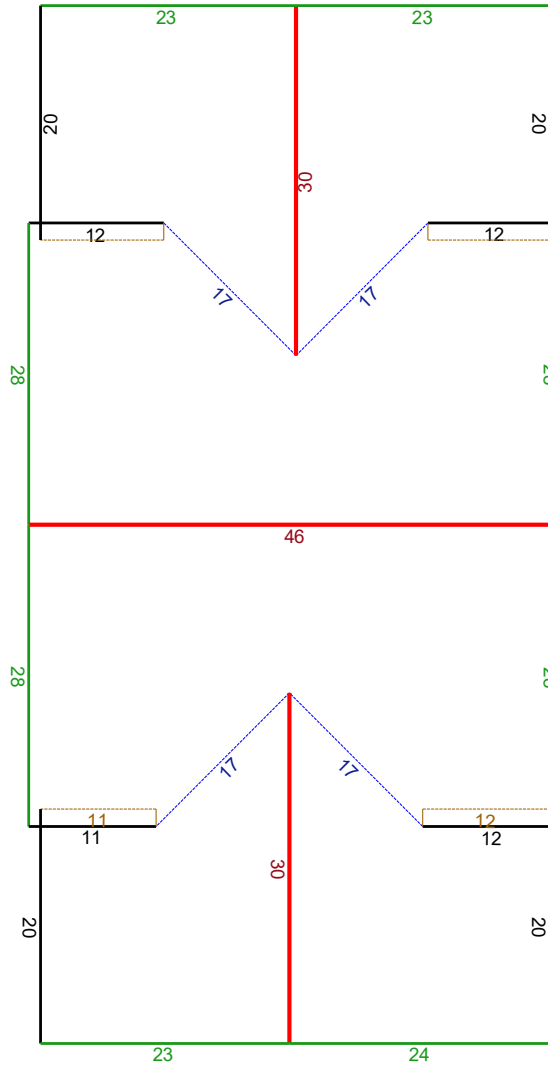


West Side

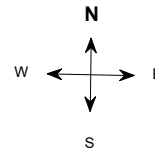


LENGTH DIAGRAM

Total Line Lengths:

Ridges = 107 ft
Hips = 0 ft
Valleys = 67 ft
Rakes = 204 ft
Eaves = 128 ft
Flashing = 6 ft
Step flashing = 45 ft
Parapets = 0 ft


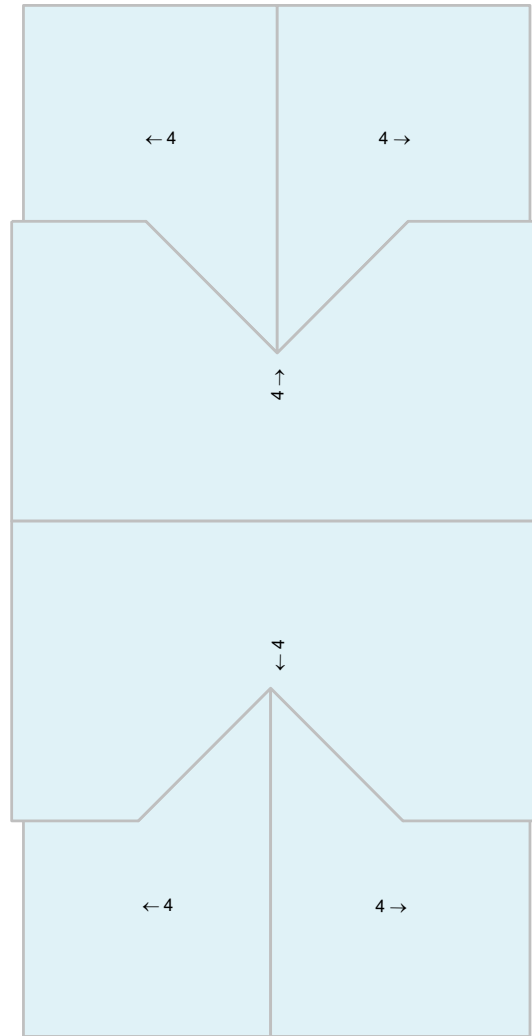
© 2019 Eagle View Technologies, Inc., All Rights Reserved.



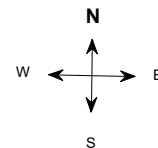
Note: This diagram contains segment lengths (rounded to the nearest whole number) over 5.0 Feet. In some cases, segment labels have been removed for readability. Plus signs preface some numbers to avoid confusion when rotated (e.g. +6 and +9).

PITCH DIAGRAM

Pitch values are shown in inches per foot, and arrows indicate slope direction. The predominant pitch on this roof is 4/12



© 2019 Eagle View Technologies, Inc., All Rights Reserved.



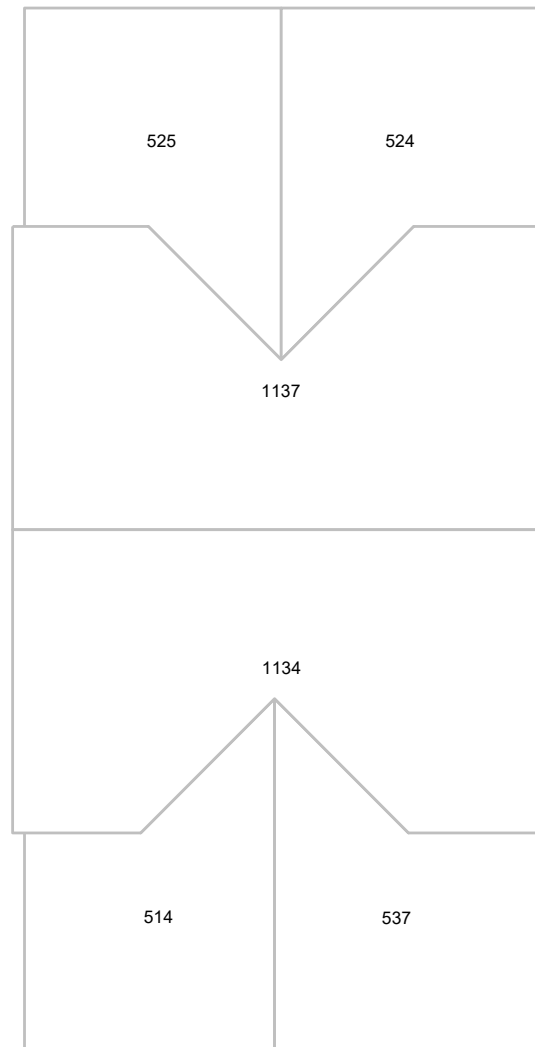
Note: This diagram contains labeled pitches for facet areas larger than 20.0 square feet. In some cases, pitch labels have been removed for readability. Blue shading indicates a pitch of 3/12 and greater.

52 Maple Island Rd, Burnsville, MN 55306-5500

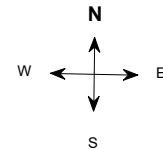
Report: 29648846

AREA DIAGRAM

Total Area = 4,371 sq ft, with 6 facets.



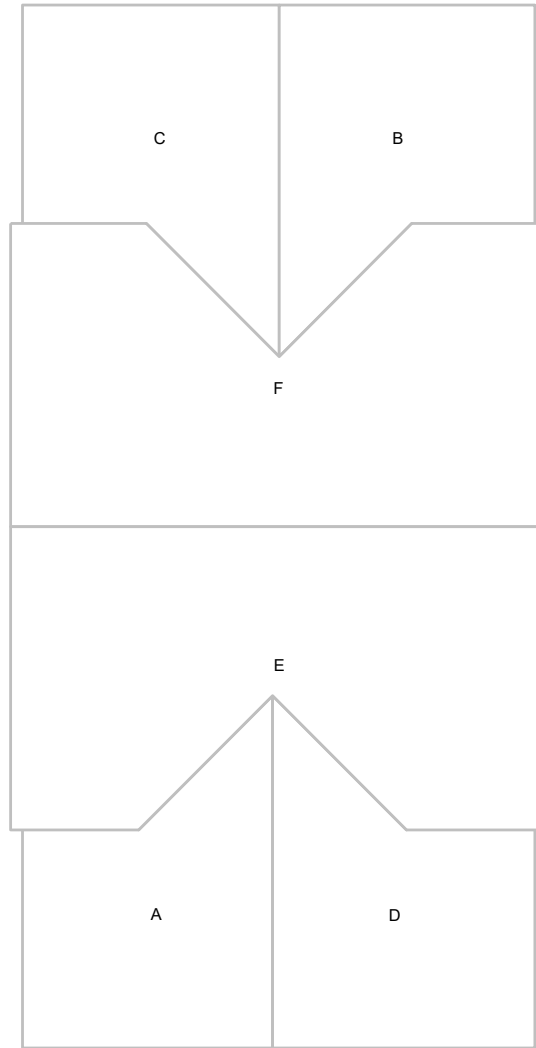
© 2019 Eagle View Technologies, Inc., All Rights Reserved.



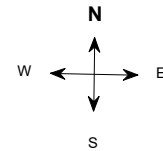
Note: This diagram shows the square feet of each roof facet (rounded to the nearest Foot). The total area in square feet, at the top of this page, is based on the non-rounded values of each roof facet (rounded to the nearest square foot after being totaled).

NOTES DIAGRAM

Roof facets are labeled from smallest to largest (A to Z) for easy reference.



© 2019 Eagle View Technologies, Inc., All Rights Reserved.



PENETRATIONS NOTES DIAGRAM

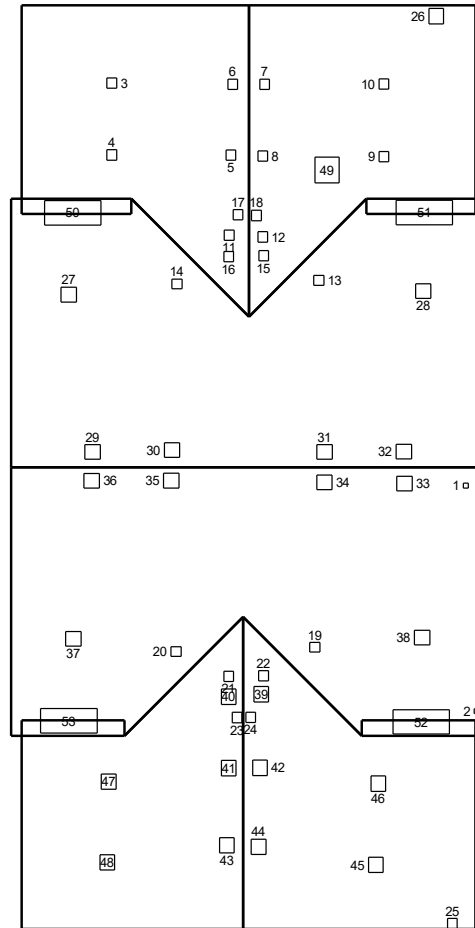
Penetrations are labeled from smallest to largest for easy reference.

Total Penetrations = 53

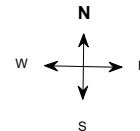
Total Penetrations Area = 137 sq ft

Total Penetrations Perimeter = 308 ft

Total Roof Area Less Penetrations = 4,234 sq ft



© 2019 Eagle View Technologies, Inc. All Rights Reserved.



REPORT SUMMARY

All Structures

Areas per Pitch	
Roof Pitches	4/12
Area (sq ft)	4370.7
% of Roof	100%

The table above lists each pitch on this roof and the total area and percent (both rounded) of the roof with that pitch.

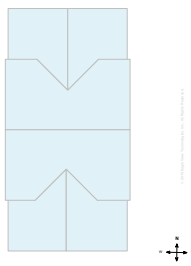
Waste Calculation Table							
Waste %	0%	10%	12%	15%	17%	20%	22%
Area (sq ft)	4,371	4,808	4,896	5,027	5,114	5,245	5,333
Squares	43.7	48.1	49.0	50.3	51.1	52.5	53.3

This table shows the total roof area and squares (rounded up to the nearest decimal) based upon different waste percentages. The waste factor is subject to the complexity of the roof, individual roofing techniques and your experience. Please consider this when calculating appropriate waste percentages. Note that only roof area is included in these waste calculations. Additional materials needed for ridge, hip, valley, and starter lengths are not included.

Penetrations	1	2	3-25	26-32	33-48	49	50	51-53		
Area (sq ft)	0.2	0.3	1	2.2	2.3	6.2	13.7	13.8		
Perimeter (ft)	2	2	4	6	6	10	16	16		

Any measured penetration smaller than 3.0x3.0 Feet may need field verification. Accuracy is not guaranteed. The total penetration area is not subtracted from the total roof area.

All Structures Totals



Total Roof Facets = 6
Total Penetrations = 53

Lengths, Areas and Pitches

Ridges = 107 ft (3 Ridges)
Hips = 0 ft (0 Hips)
Valleys = 67 ft (4 Valleys)
Rakes† = 204 ft (8 Rakes)
Eaves/Starter‡ = 128 ft (8 Eaves)
Drip Edge (Eaves + Rakes) = 332 ft (16 Lengths)
Parapet Walls = 0 (0 Lengths)
Flashing = 6 ft (4 Lengths)
Step flashing = 45 ft (4 Lengths)
Total Area = 4,371 sq ft
Total Penetrations Area = 137 sq ft
Total Roof Area Less Penetrations = 4,234 sq ft
Total Penetrations Perimeter = 308 ft
Predominant Pitch = 4/12

Property Location

Longitude = -93.2811564
Latitude = 44.7182022

Notes

This was ordered as a commercial property. There were no changes to the structure in the past four years.

† Rakes are defined as roof edges that are sloped (not level).
‡ Eaves are defined as roof edges that are not sloped and level.

52 Maple Island Rd, Burnsville, MN 55306-5500

Report: 29648846

Online Maps

Online map of property

http://maps.google.com/maps?f=q&source=s_q&hl=en&geocode=&q=52+Maple+Island+Rd,Burnsville,MN,55306-5500

Directions from ABC Supply Co. to this property

http://maps.google.com/maps?f=d&source=s_d&saddr=5130+Industrial+St,Maple+Plain,MN,55359-8004&daddr=52+Maple+Island+Rd,Burnsville,MN,55306-5500