

In this 3D model, facets appear as semi-transparent to reveal overhangs.

Building: 2

## PREPARED FOR

**Contact:** Tony Tompkins  
**Company:** ABC Supply Co.  
**Address:** 5130 Industrial St  
 Maple Plain, MN 55359-8004  
**Phone:** 763-479-2966

## TABLE OF CONTENTS

Images .....	1
Length Diagram .....	4
Pitch Diagram .....	5
Area Diagram .....	6
Notes Diagram .....	7
Penetrations Diagram .....	8
Report Summary .....	9

## MEASUREMENTS

Total Roof Area = 16,047 sq ft  
 Total Roof Facets = 57  
 Predominant Pitch = 6/12  
 Number of Stories > 1  
 Total Ridges/Hips = 507 ft  
 Total Valleys = 443 ft  
 Total Rakes = 958 ft  
 Total Eaves = 627 ft  
 Total Penetrations = 76  
 Total Penetrations Perimeter = 374 ft  
 Total Penetrations Area = 121 sq ft

Measurements provided by [www.eagleview.com](http://www.eagleview.com)



**Certified Accurate**

[www.eagleview.com/Guarantee.aspx](http://www.eagleview.com/Guarantee.aspx)

## IMAGES

The following aerial images show different angles of this structure for your reference.

Top View

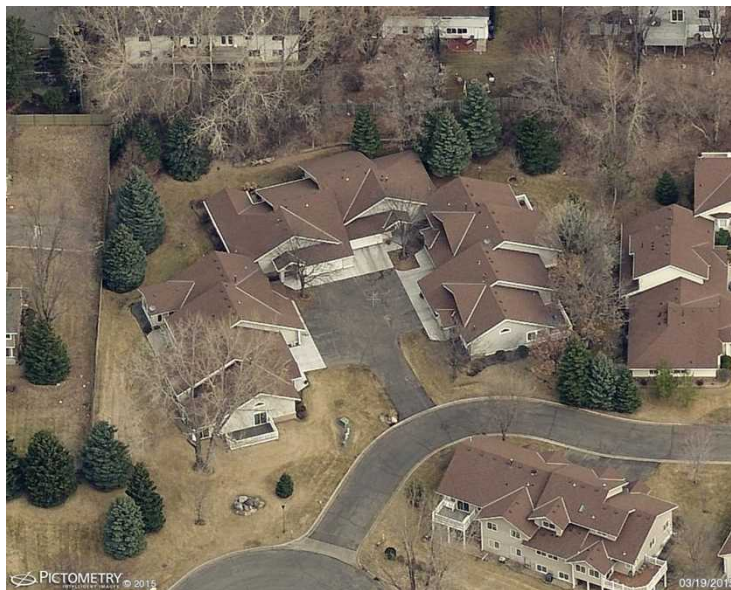


# IMAGES

North Side

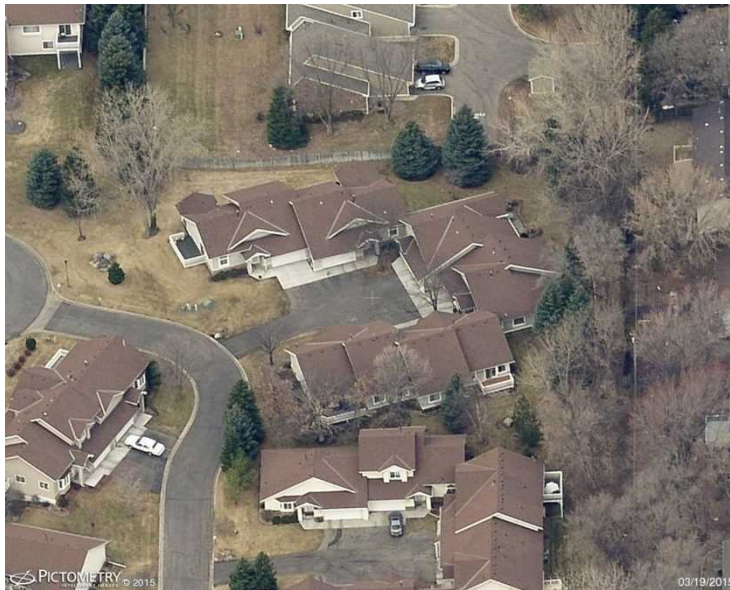


South Side



# IMAGES

East Side

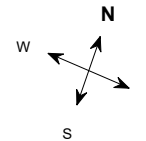
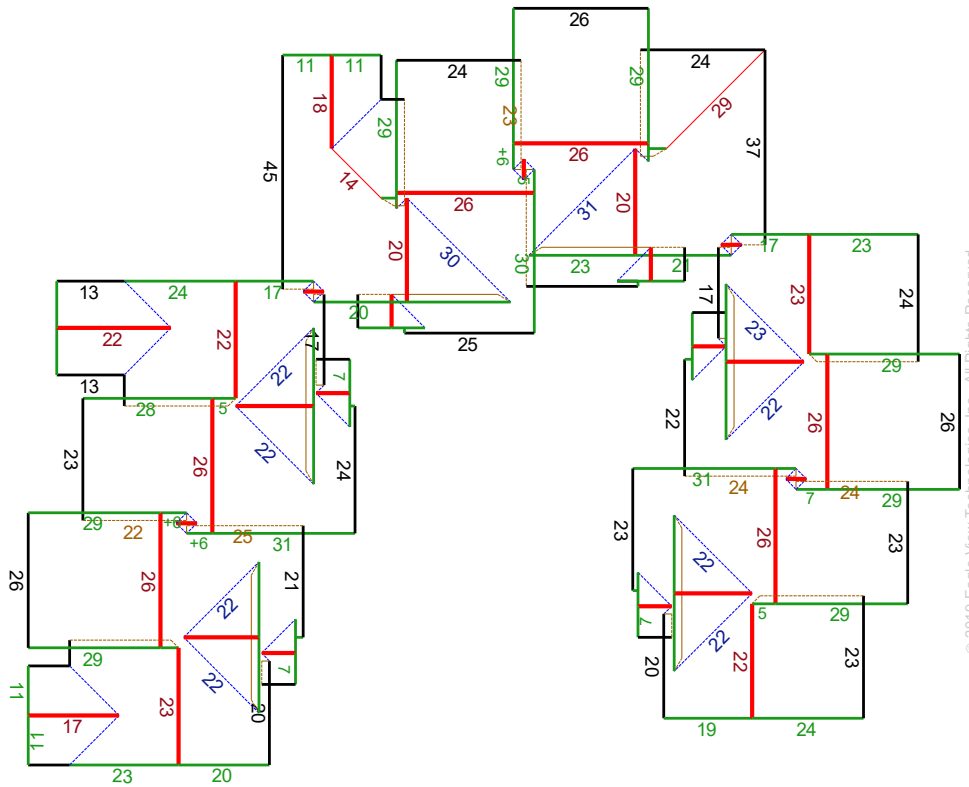


West Side



# LENGTH DIAGRAM

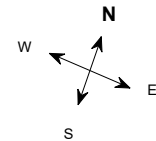
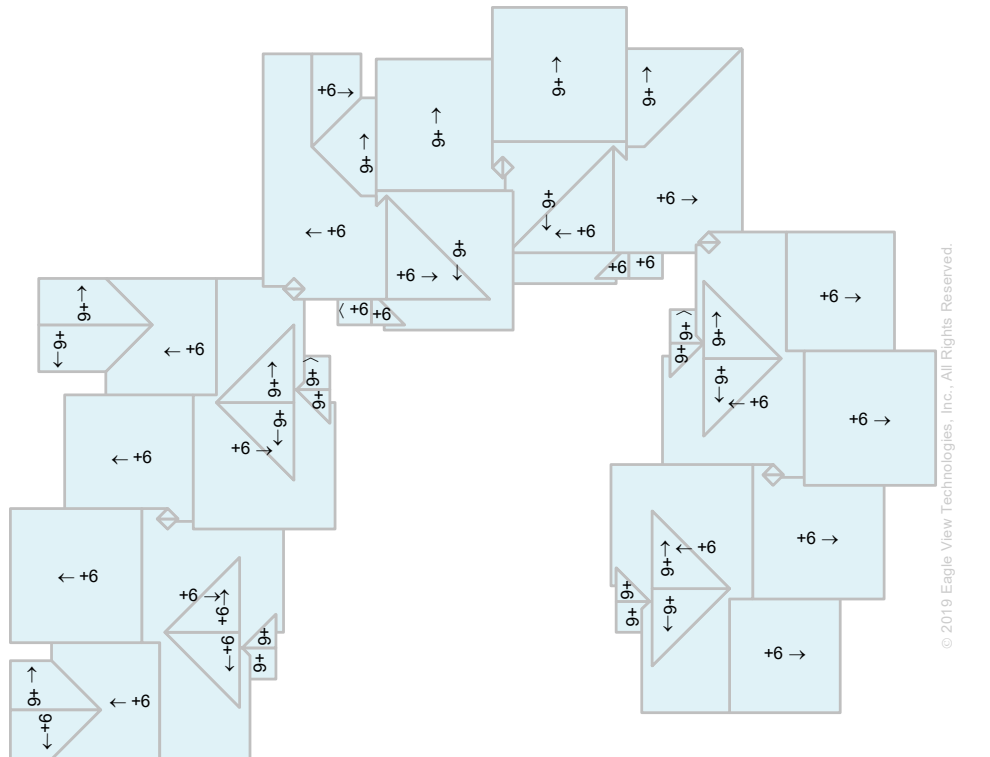
Total Line Lengths:

**Ridges = 464 ft**
**Hips = 43 ft**
**Valleys = 443 ft**
**Rakes = 958 ft**
**Eaves = 627 ft**
**Flashing = 191 ft**
**Step flashing = 378 ft**
**Parapets = 0 ft**


**Note:** This diagram contains segment lengths (rounded to the nearest whole number) over 5.0 Feet. In some cases, segment labels have been removed for readability. Plus signs preface some numbers to avoid confusion when rotated (e.g. +6 and +9).

# PITCH DIAGRAM

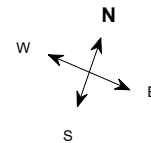
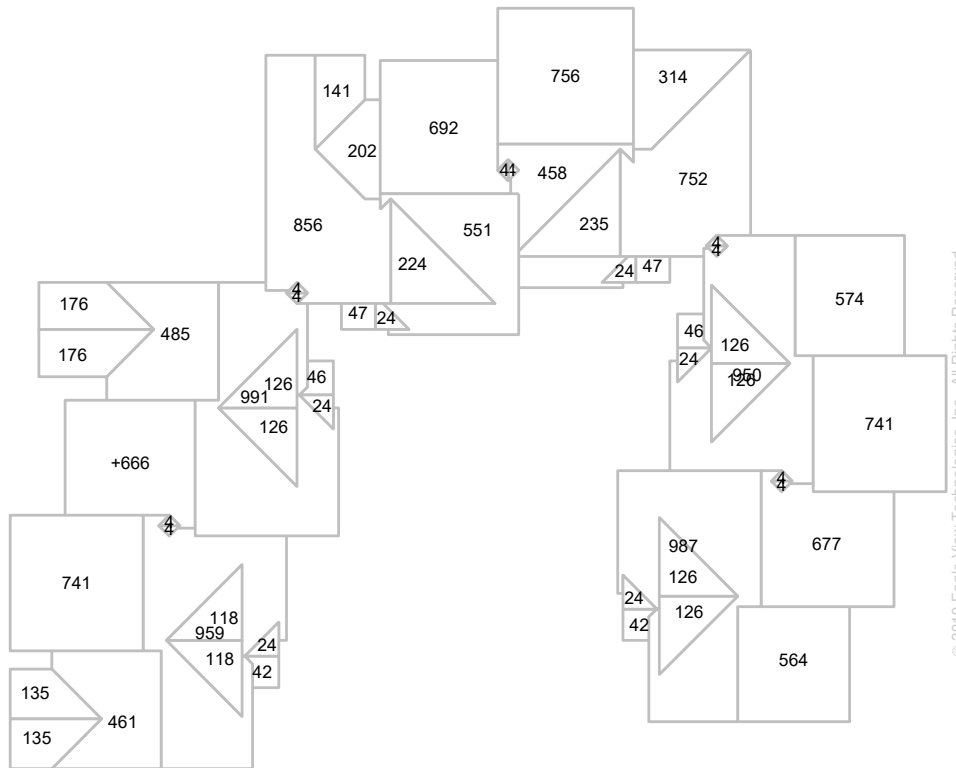
Pitch values are shown in inches per foot, and arrows indicate slope direction. The predominant pitch on this roof is 6/12



Note: This diagram contains labeled pitches for facet areas larger than 20.0 square feet. In some cases, pitch labels have been removed for readability. Blue shading indicates a pitch of 3/12 and greater.

# AREA DIAGRAM

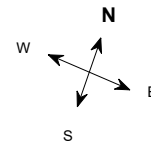
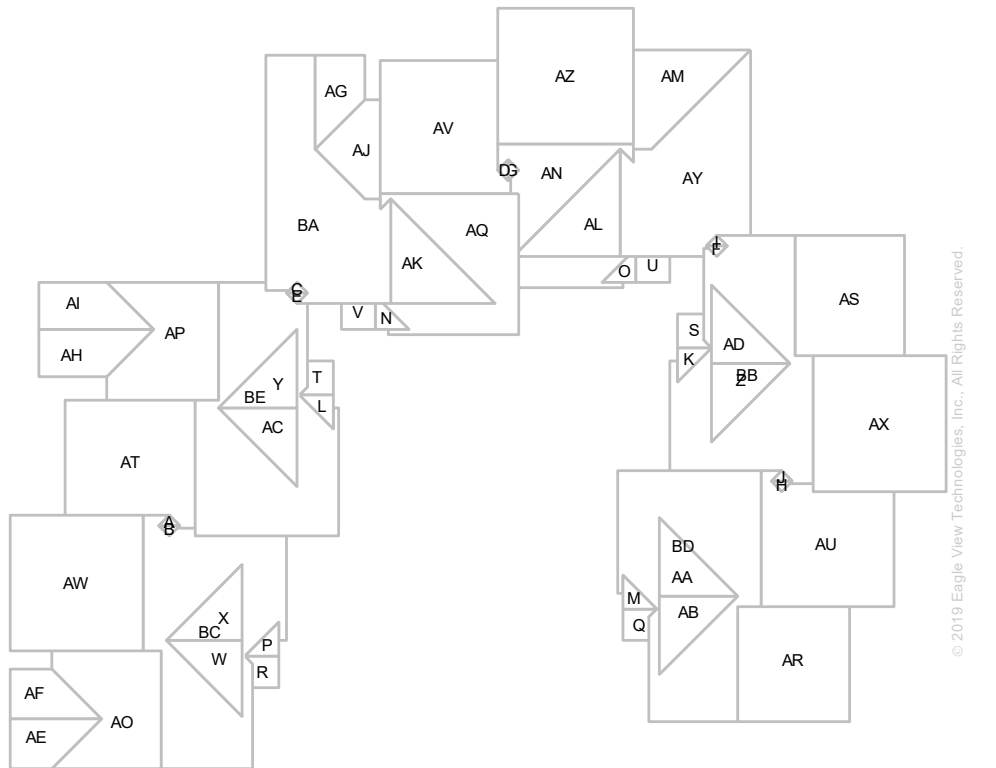
Total Area = 16,047 sq ft, with 57 facets.



**Note:** This diagram shows the square feet of each roof facet (rounded to the nearest Foot). The total area in square feet, at the top of this page, is based on the non-rounded values of each roof facet (rounded to the nearest square foot after being totaled).

# NOTES DIAGRAM

Roof facets are labeled from smallest to largest (A to Z) for easy reference.





# PENETRATIONS NOTES DIAGRAM

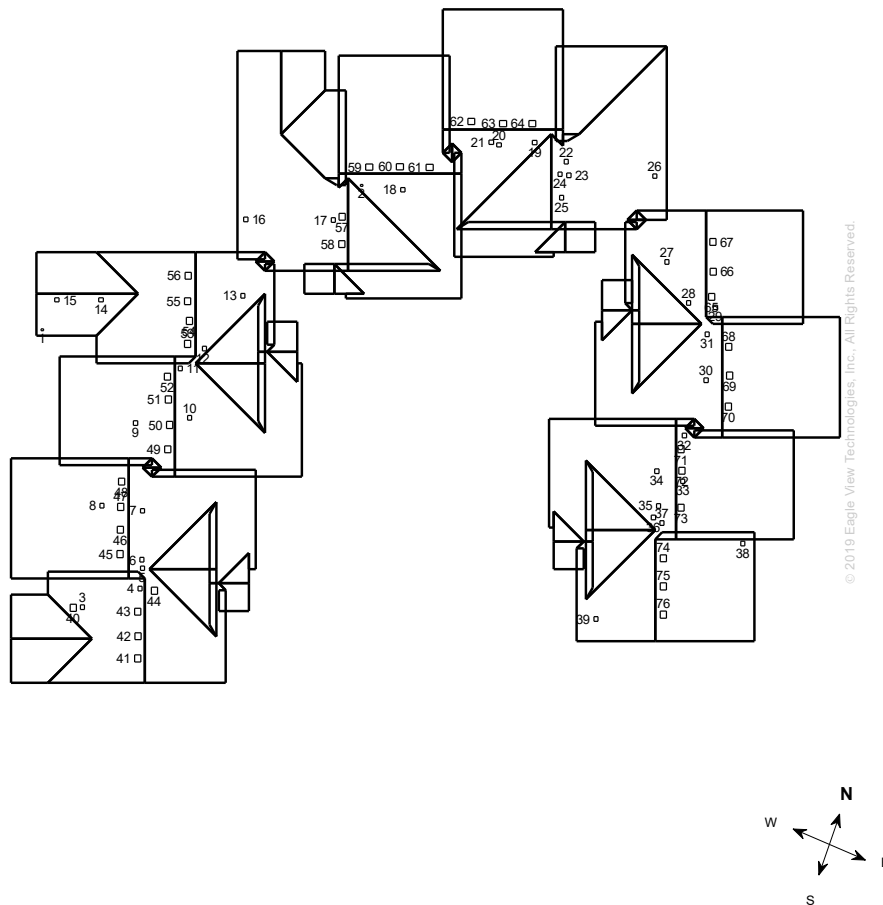
Penetrations are labeled from smallest to largest for easy reference.

Total Penetrations = 76

Total Penetrations Area = 121 sq ft

Total Penetrations Perimeter = 374 ft

Total Roof Area Less Penetrations = 15,926 sq ft



# REPORT SUMMARY

## All Structures

### Areas per Pitch

<b>Roof Pitches</b>	6/12
<b>Area (sq ft)</b>	16046.3
<b>% of Roof</b>	100%

The table above lists each pitch on this roof and the total area and percent (both rounded) of the roof with that pitch.

### Waste Calculation Table

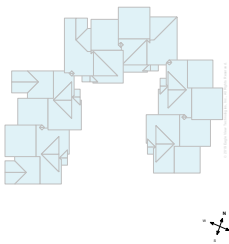
Waste %	0%	10%	12%	15%	17%	20%	22%
<b>Area (sq ft)</b>	16,047	17,652	17,973	18,454	18,775	19,256	19,577
<b>Squares</b>	160.5	176.5	179.7	184.5	187.7	192.6	195.8

This table shows the total roof area and squares (rounded up to the nearest decimal) based upon different waste percentages. The waste factor is subject to the complexity of the roof, individual roofing techniques and your experience. Please consider this when calculating appropriate waste percentages. Note that only roof area is included in these waste calculations. Additional materials needed for ridge, hip, valley, and starter lengths are not included.

Penetrations	1	2	3-39	40-55	56-76				
<b>Area (sq ft)</b>	0.2	0.3	1	2.2	2.3				
<b>Perimeter (ft)</b>	2	2	4	6	6				

Any measured penetration smaller than 3.0x3.0 Feet may need field verification. Accuracy is not guaranteed. The total penetration area is not subtracted from the total roof area.

## All Structures Totals



Total Roof Facets = 57  
 Total Penetrations = 76

### Lengths, Areas and Pitches

Ridges = 464 ft (30 Ridges)  
 Hips = 43 ft (2 Hips)  
 Valleys = 443 ft (47 Valleys)  
 Rakes† = 958 ft (70 Rakes)  
 Eaves/Starter‡ = 627 ft (36 Eaves)  
 Drip Edge (Eaves + Rakes) = 1,585 ft (106 Lengths)  
 Parapet Walls = 0 (0 Lengths)  
 Flashing = 191 ft (33 Lengths)  
 Step flashing = 378 ft (38 Lengths)  
 Total Area = 16,047 sq ft  
 Total Penetrations Area = 121 sq ft  
 Total Roof Area Less Penetrations = 15,926 sq ft  
 Total Penetrations Perimeter = 374 ft  
 Predominant Pitch = 6/12

### Property Location

Longitude = -93.2657565  
 Latitude = 44.7529697

### Notes

This was ordered as a commercial property. There were no changes to the structure in the past four years.

† Rakes are defined as roof edges that are sloped (not level).  
 ‡ Eaves are defined as roof edges that are not sloped and level.

700 E Nicollet Blvd, Burnsville, MN 55337

Report: 29651440

**Online Maps**

Online map of property

[http://maps.google.com/maps?f=q&source=s\\_q&hl=en&geocode=&q=700+E+Nicollet+Blvd,Burnsville,MN,55337](http://maps.google.com/maps?f=q&source=s_q&hl=en&geocode=&q=700+E+Nicollet+Blvd,Burnsville,MN,55337)

Directions from ABC Supply Co. to this property

[http://maps.google.com/maps?f=d&source=s\\_d&saddr=5130+Industrial+St,Maple+Plain,MN,55359-8004&daddr=700+E+Nicollet+Blvd,Burnsville,MN,55337](http://maps.google.com/maps?f=d&source=s_d&saddr=5130+Industrial+St,Maple+Plain,MN,55359-8004&daddr=700+E+Nicollet+Blvd,Burnsville,MN,55337)