



[VIEW 3D MODEL](#)

Areas	Siding	Other
Facades	0 ft <sup>2</sup>	4364 ft <sup>2</sup>
Openings	0 ft <sup>2</sup>	1102 ft <sup>2</sup>
Trims*	0 ft <sup>2</sup>	18 ft <sup>2</sup>
Unknown (no photos)*	0 ft <sup>2</sup>	0 ft <sup>2</sup>
<b>Total</b>	<b>0 ft<sup>2</sup></b>	<b>5484 ft<sup>2</sup></b>

\*Any trim or unknown material that touches siding is included in the 'Siding' column. If it does not touch siding, then it's included in the 'Other' column.

Openings	Siding	Other
Quantity	0	48
Tops Length	-	228' 1"
Sills Length	-	162' 9"
Sides Length	-	360' 9"
<b>Total Perimeter</b>	<b>-</b>	<b>751' 8"</b>

Siding Waste Factor*	Area	Squares
Zero Waste	0 ft <sup>2</sup>	0¼
+10%	0 ft <sup>2</sup>	0¼
+18%	0 ft <sup>2</sup>	0¼
With Openings	0 ft <sup>2</sup>	0¼
Openings +10%	0 ft <sup>2</sup>	0¼
Openings +18%	0 ft <sup>2</sup>	0¼

\*The first three rows of the Siding Waste Factor table are calculated using the total ft<sup>2</sup> of siding facades, ft<sup>2</sup> of trim touching siding, and ft<sup>2</sup> of unknowns touching siding.

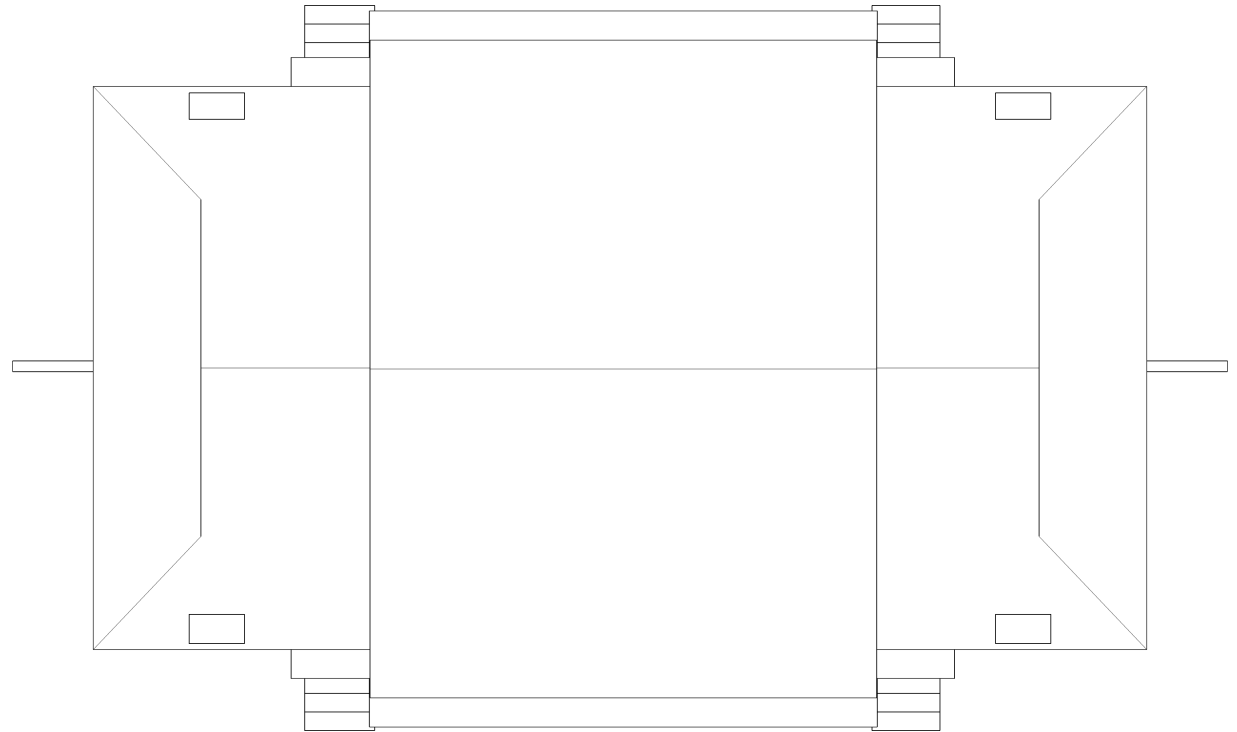
Trim	Siding	Other
Level Starter	-	603' 6"
Sloped Trim	-	148' 8"
Vertical Trim	-	1304' 1"

Roofline	Length	Avg. Depth	Soffit Area
Eaves Fascia (Gutters)	408' 10"	-	-
Level Frieze Board	423' 5"	2' 11"	1064 ft <sup>2</sup>
Rakes Fascia	240' 4"	-	-
Sloped Frieze Board	209'	2'	522 ft <sup>2</sup>

Corners	Siding	Other
Inside Qty	0	-
Inside Length	-	-
Outside Qty	0	-
Outside Length	-	-

Accessories	Siding	Other
Shutter Qty	0	0
Shutter Area	0 ft <sup>2</sup>	0 ft <sup>2</sup>
Vents Qty	0	0
Vents Area	0 ft <sup>2</sup>	0 ft <sup>2</sup>

Roof	Area	Total	Length
Roof facets	6111 ft <sup>2</sup>	14	-
Ridges / Hips	-	7	132' 1"
Valleys	-	0	-
Rakes	-	20	240' 4"
Gutters / Eaves	-	18	408' 10"
Flashing	-	20	205' 7"
Step Flashing	-	20	148' 8"

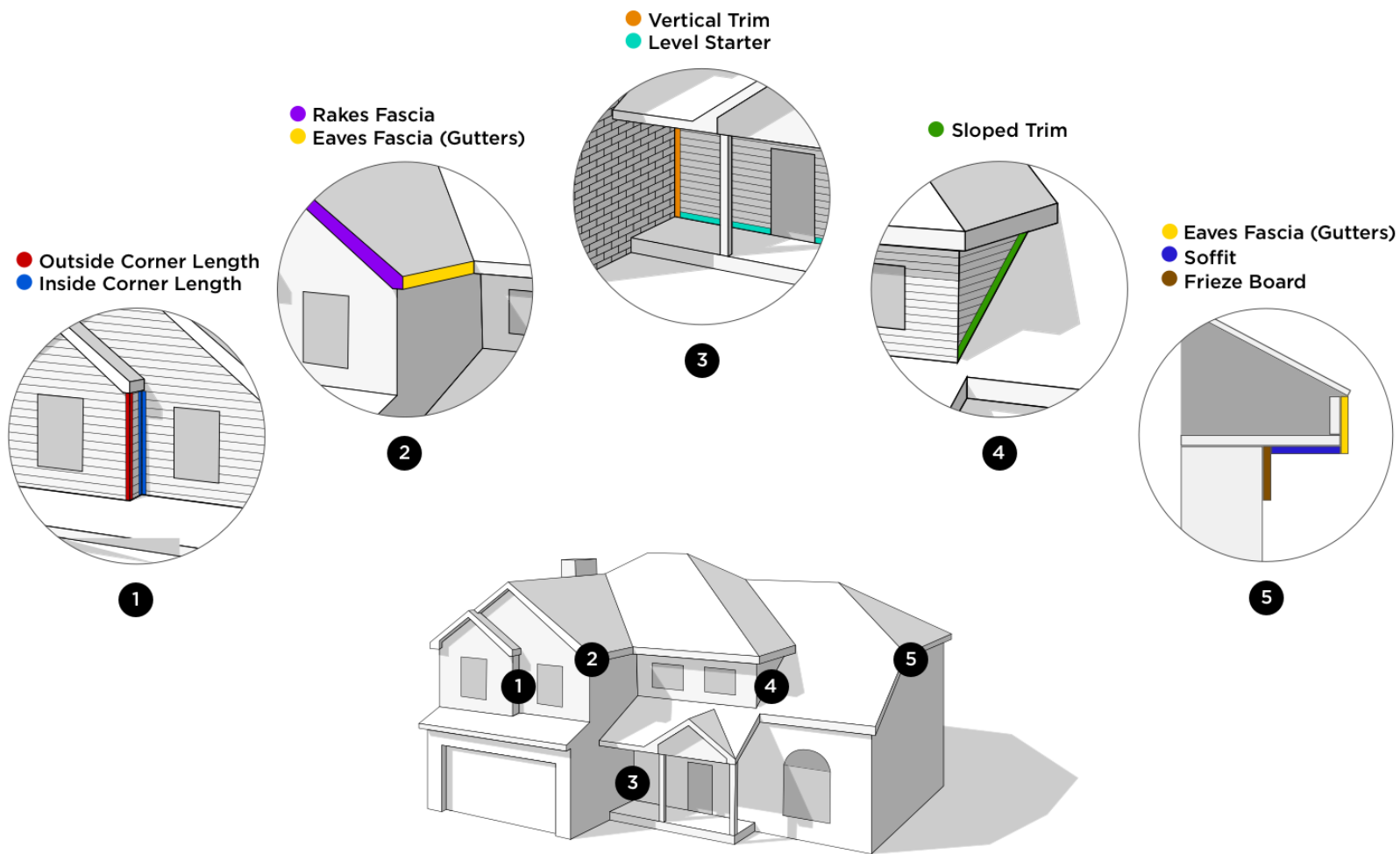


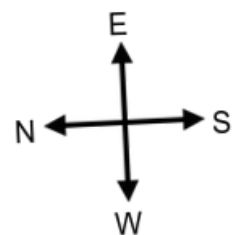
Roof Pitch	Area	Percentage
5/12	5576 ft <sup>2</sup>	91.24%
8/12	535 ft <sup>2</sup>	8.76%

### Waste Factor Calculation

	Zero Waste	+5%	+10%	+15%	+20%
<b>Area</b>	6111 ft <sup>2</sup>	6417 ft <sup>2</sup>	6722 ft <sup>2</sup>	7028 ft <sup>2</sup>	7333 ft <sup>2</sup>
<b>Squares</b>	61 <sup>1</sup> / <sub>3</sub>	64 <sup>1</sup> / <sub>3</sub>	67 <sup>1</sup> / <sub>3</sub>	70 <sup>1</sup> / <sub>3</sub>	73 <sup>1</sup> / <sub>3</sub>

The table above provides the total roof area of a given property using waste percentages as noted. Please consider that area values and specific waste factors can be influenced by the size and complexity of the property, captured image quality, specific roofing techniques, and your own level of expertise. Ridge, hip, valley, and starter lengths are not included and may require additional material.

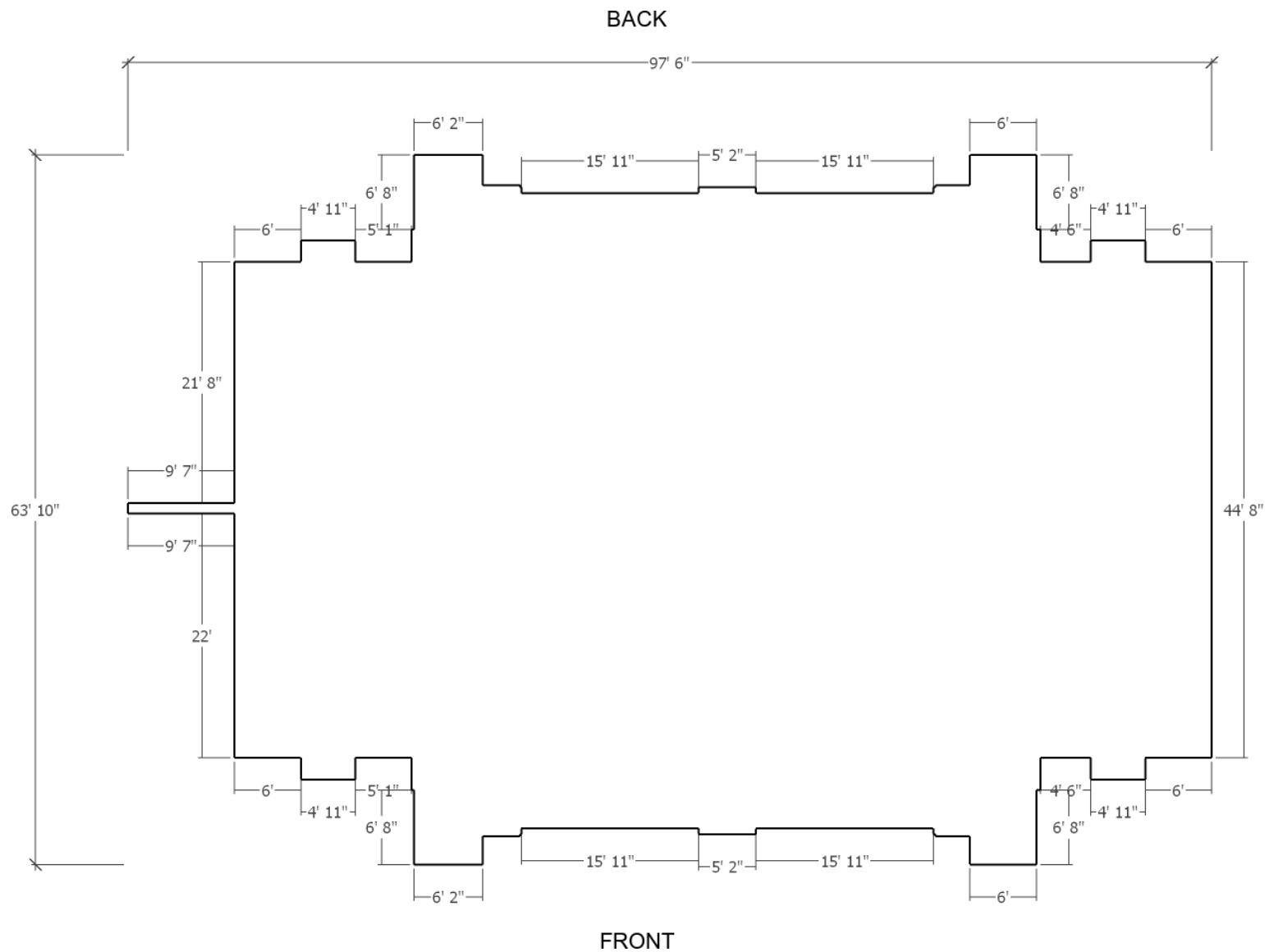


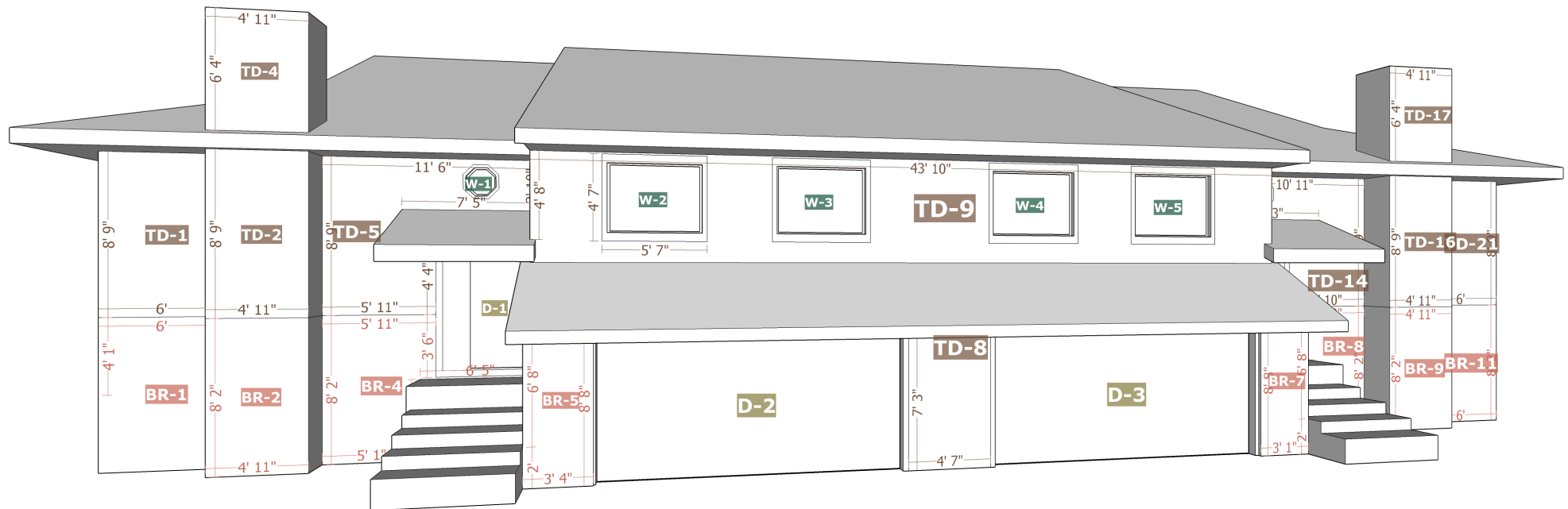
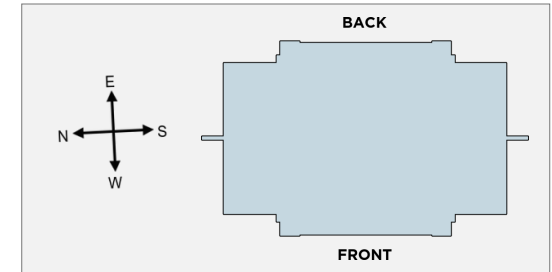


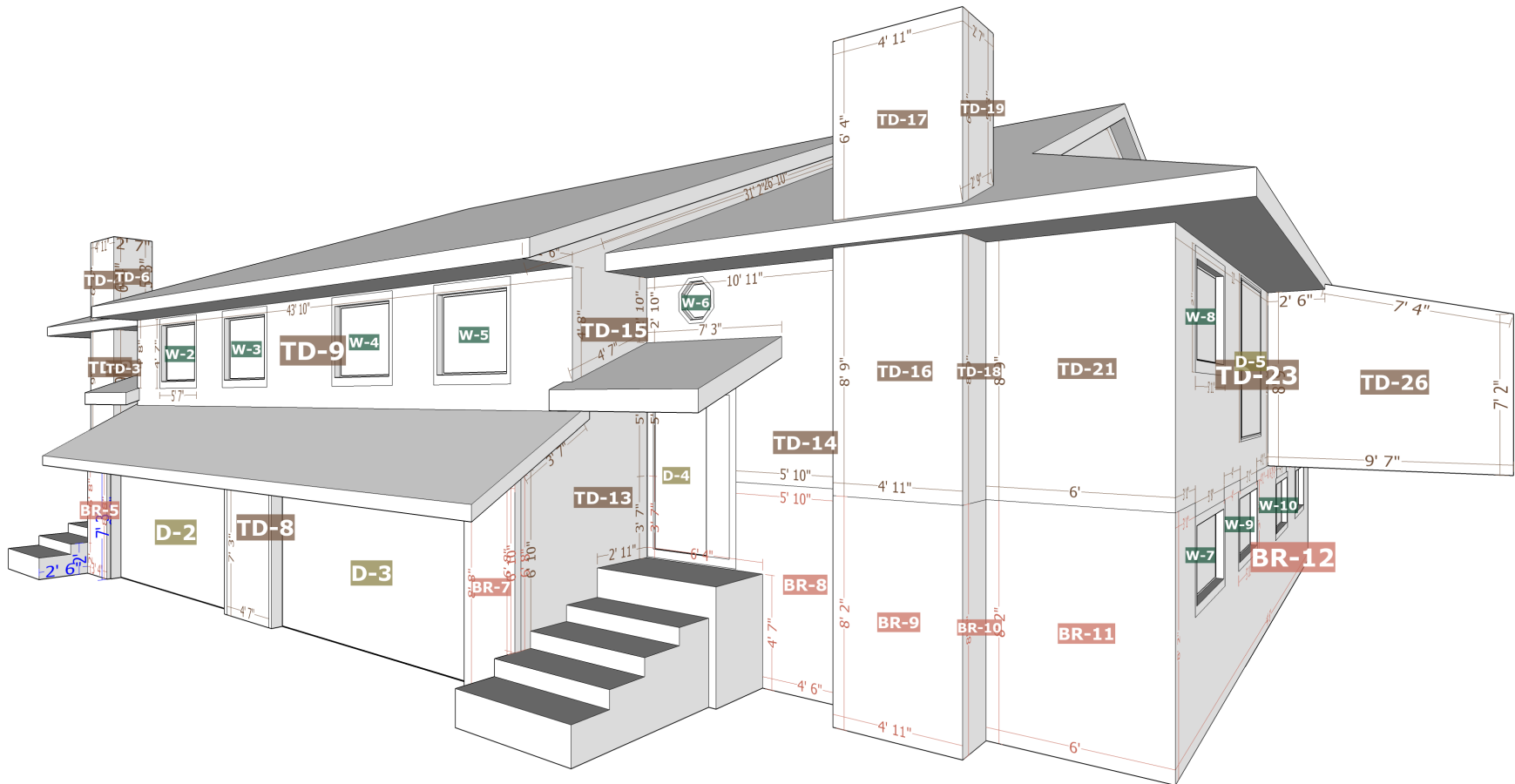
Number of Stories: >1

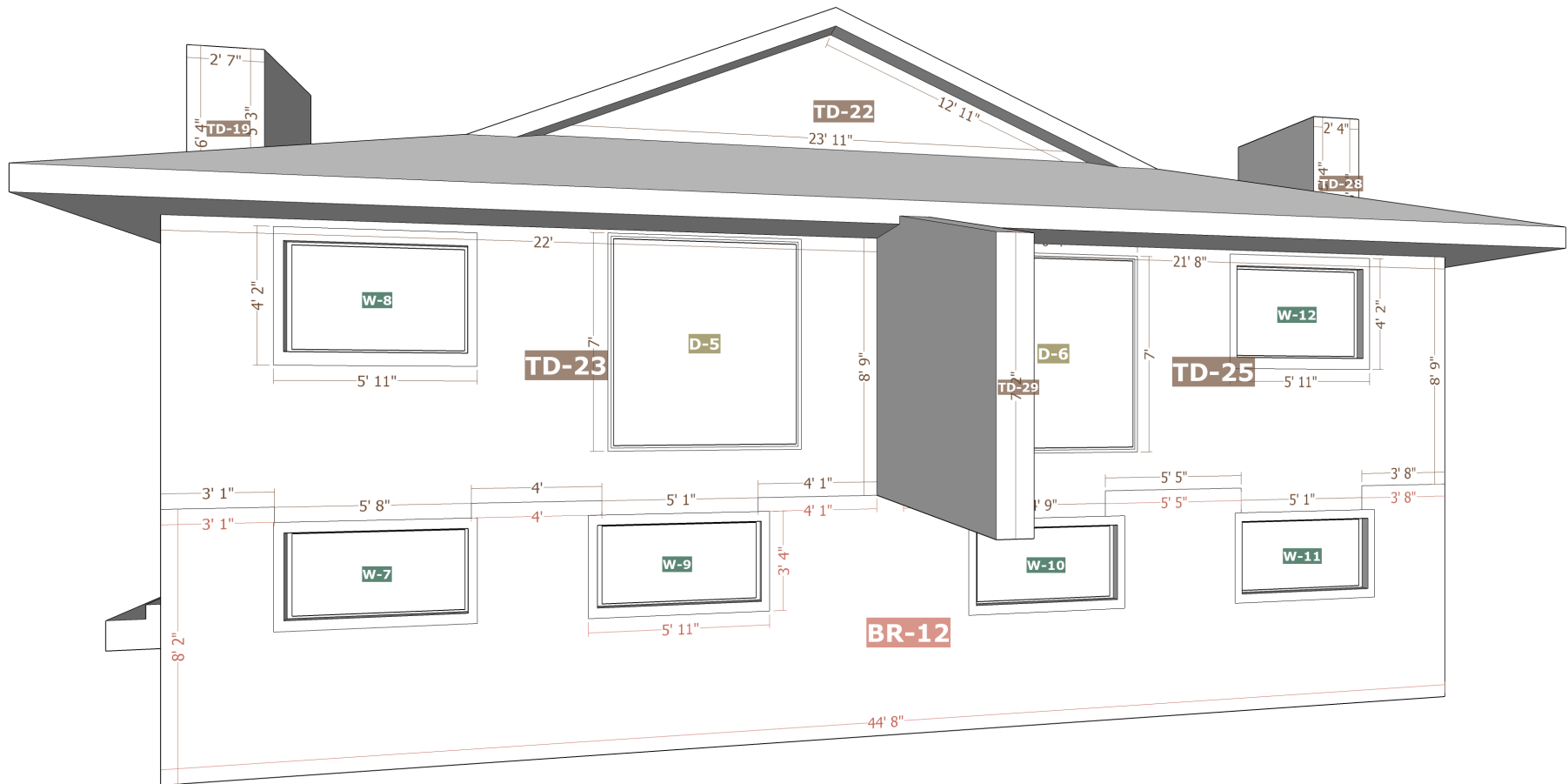
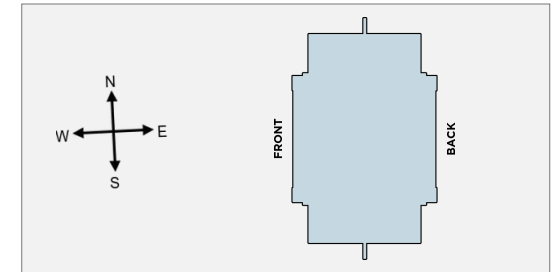
Footprint Perimeter: 353' 5"

Footprint Area: 4773 ft<sup>2</sup>

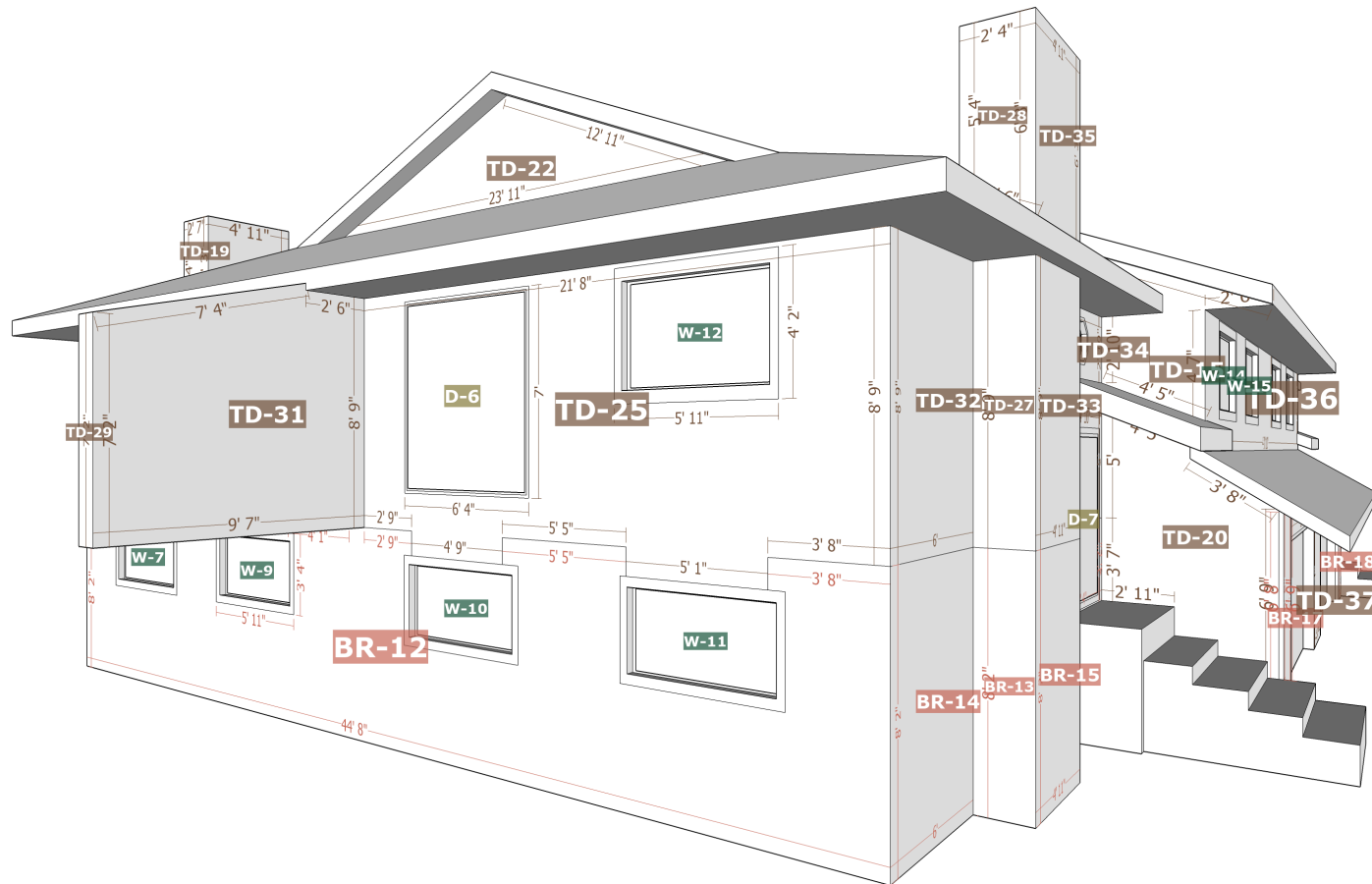
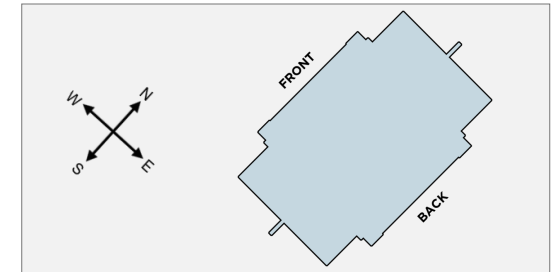




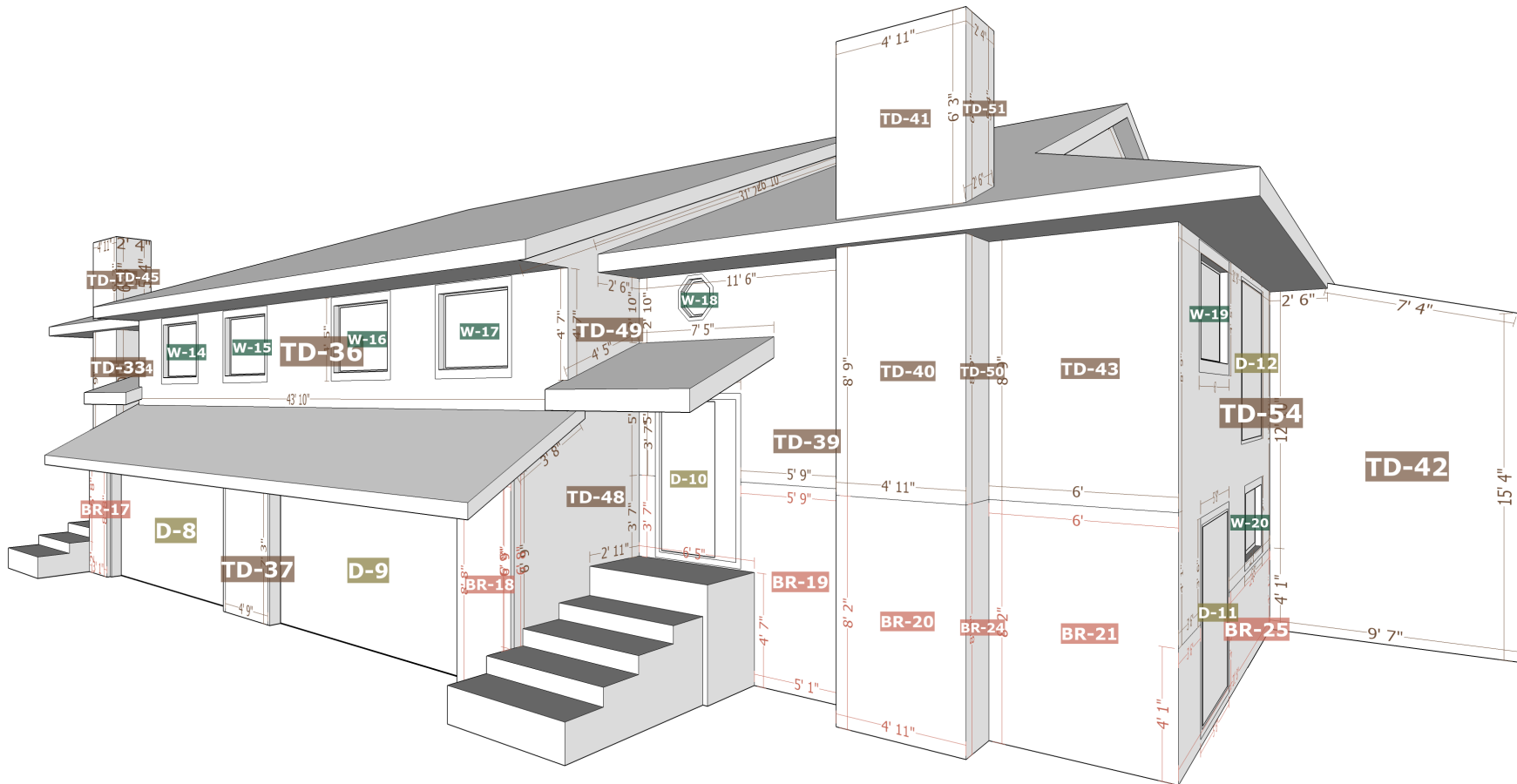
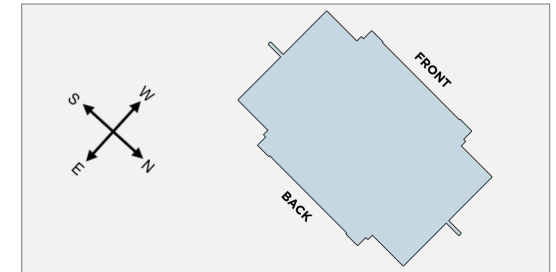


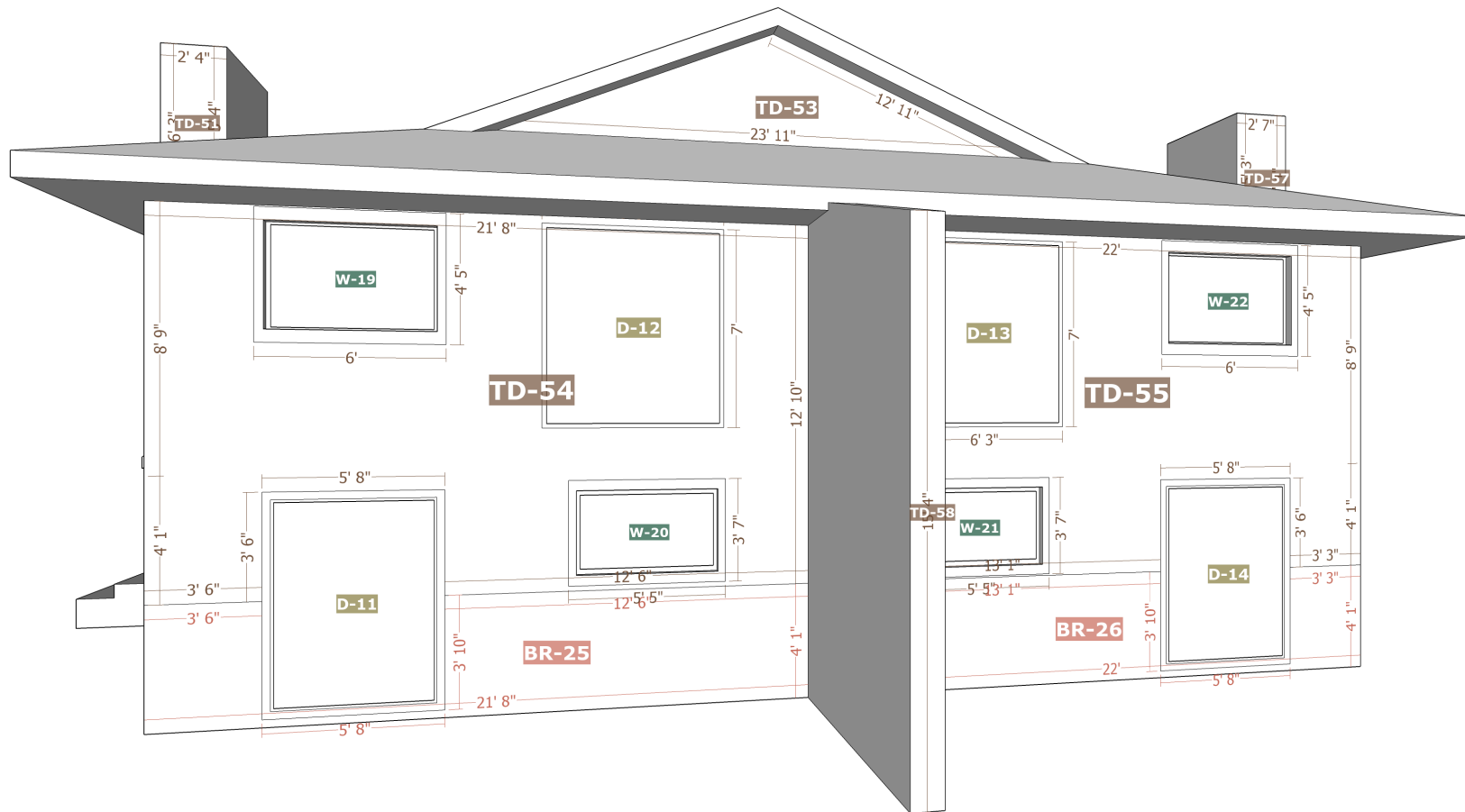
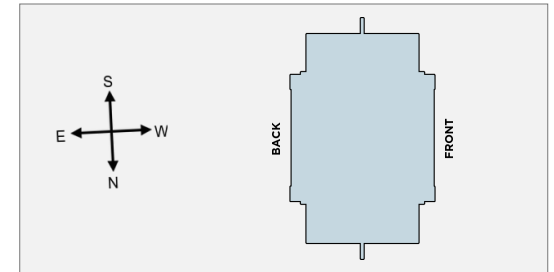


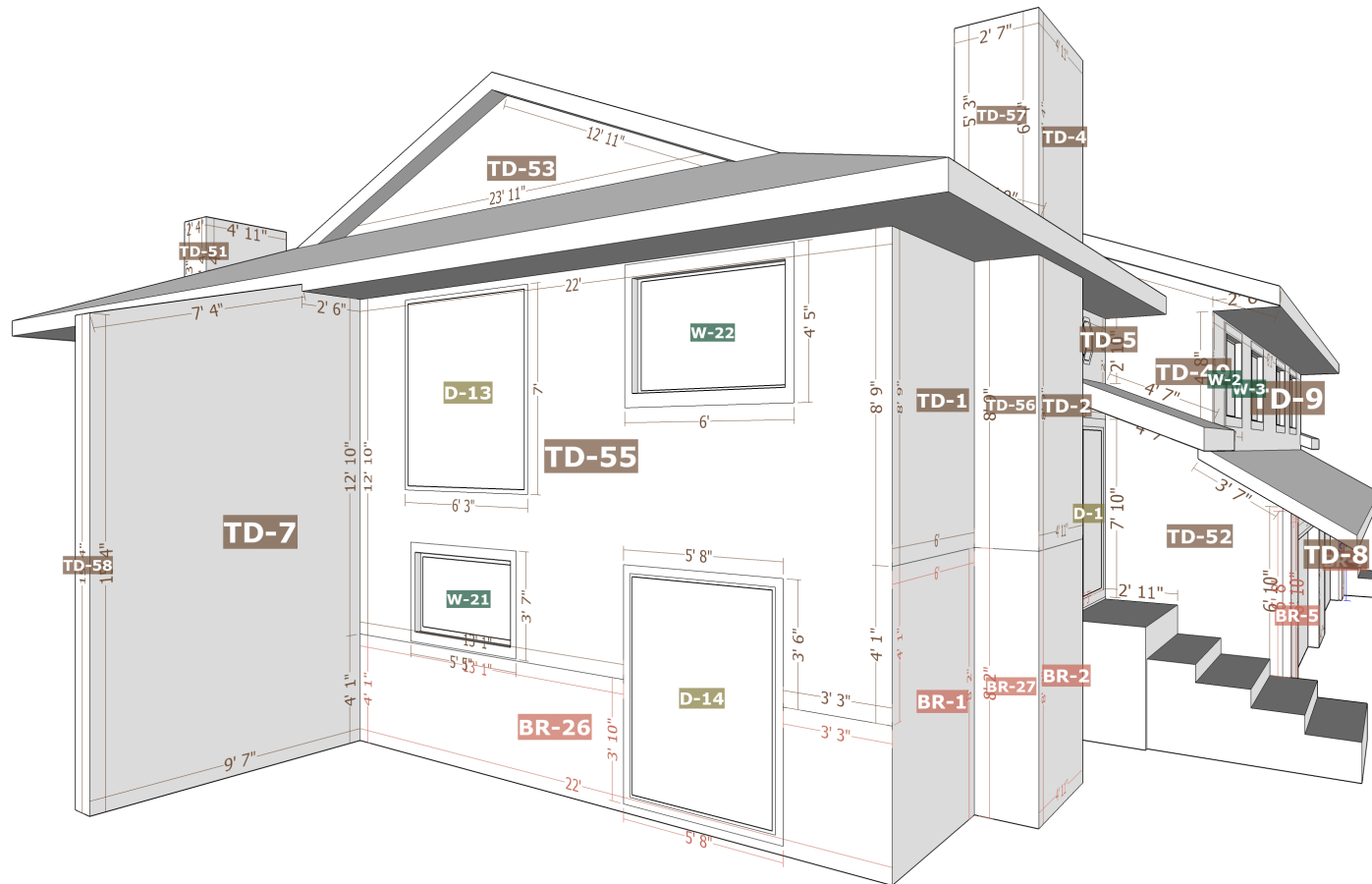
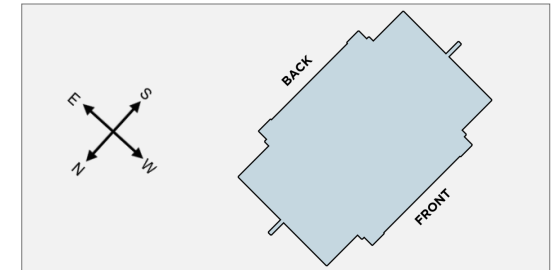












## Brick

Facade	Area	Openings	Shutters	Vents
BR-1	49 ft <sup>2</sup>	0	0	0
BR-2	40 ft <sup>2</sup>	0	0	0
BR-3	16 ft <sup>2</sup>	0	0	0
BR-4	45 ft <sup>2</sup>	0	0	0
BR-5	29 ft <sup>2</sup>	0	0	0
BR-6	15 ft <sup>2</sup>	0	0	0
BR-7	27 ft <sup>2</sup>	0	0	0
BR-8	42 ft <sup>2</sup>	0	0	0
BR-9	40 ft <sup>2</sup>	0	0	0
BR-10	16 ft <sup>2</sup>	0	0	0
BR-11	49 ft <sup>2</sup>	0	0	0
BR-12	273 ft <sup>2</sup>	4	0	0
BR-13	15 ft <sup>2</sup>	0	0	0
BR-14	49 ft <sup>2</sup>	0	0	0
BR-15	40 ft <sup>2</sup>	0	0	0
BR-16	43 ft <sup>2</sup>	0	0	0

## Brick

Facade	Area	Openings	Shutters	Vents
BR-17	27 ft <sup>2</sup>	0	0	0
BR-18	29 ft <sup>2</sup>	0	0	0
BR-19	48 ft <sup>2</sup>	0	0	0
BR-20	40 ft <sup>2</sup>	0	0	0
BR-21	49 ft <sup>2</sup>	0	0	0
BR-22	15 ft <sup>2</sup>	0	0	0
BR-23	16 ft <sup>2</sup>	0	0	0
BR-24	15 ft <sup>2</sup>	0	0	0
BR-25	67 ft <sup>2</sup>	1	0	0
BR-26	68 ft <sup>2</sup>	1	0	0
BR-27	16 ft <sup>2</sup>	0	0	0
<b>Total</b>	<b>1178 ft<sup>2</sup></b>	<b>6</b>	<b>0</b>	<b>0</b>

## Tudor

Facade	Area	Openings	Shutters	Vents
TD-1	52 ft <sup>2</sup>	0	0	0
TD-2	43 ft <sup>2</sup>	0	0	0
TD-3	17 ft <sup>2</sup>	0	0	0
TD-4	31 ft <sup>2</sup>	0	0	0
TD-5	67 ft <sup>2</sup>	2	0	0
TD-6	15 ft <sup>2</sup>	0	0	0
TD-7	157 ft <sup>2</sup>	0	0	0
TD-8	91 ft <sup>2</sup>	2	0	0
TD-9	152 ft <sup>2</sup>	4	0	0
TD-10	17 ft <sup>2</sup>	0	0	0
TD-11	26 ft <sup>2</sup>	0	0	0
TD-12	13 ft <sup>2</sup>	0	0	0
TD-13	52 ft <sup>2</sup>	0	0	0
TD-14	66 ft <sup>2</sup>	2	0	0
TD-15	75 ft <sup>2</sup>	0	0	0
TD-16	43 ft <sup>2</sup>	0	0	0



**Tudor**

Facade	Area	Openings	Shutters	Vents
TD-17	31 ft <sup>2</sup>	0	0	0
TD-18	17 ft <sup>2</sup>	0	0	0
TD-19	15 ft <sup>2</sup>	0	0	0
TD-20	51 ft <sup>2</sup>	0	0	0
TD-21	52 ft <sup>2</sup>	0	0	0
TD-22	59 ft <sup>2</sup>	0	0	0
TD-23	128 ft <sup>2</sup>	2	0	0
TD-24	26 ft <sup>2</sup>	0	0	0
TD-25	129 ft <sup>2</sup>	2	0	0
TD-26	79 ft <sup>2</sup>	0	0	0
TD-27	17 ft <sup>2</sup>	0	0	0
TD-28	13 ft <sup>2</sup>	0	0	0
TD-29	7 ft <sup>2</sup>	0	0	0
TD-30	26 ft <sup>2</sup>	0	0	0
TD-31	79 ft <sup>2</sup>	0	0	0
TD-32	52 ft <sup>2</sup>	0	0	0

## Tudor

Facade	Area	Openings	Shutters	Vents
TD-33	43 ft <sup>2</sup>	0	0	0
TD-34	67 ft <sup>2</sup>	2	0	0
TD-35	31 ft <sup>2</sup>	0	0	0
TD-36	157 ft <sup>2</sup>	4	0	0
TD-37	92 ft <sup>2</sup>	2	0	0
TD-38	26 ft <sup>2</sup>	0	0	0
TD-39	74 ft <sup>2</sup>	2	0	0
TD-40	43 ft <sup>2</sup>	0	0	0
TD-41	31 ft <sup>2</sup>	0	0	0
TD-42	157 ft <sup>2</sup>	0	0	0
TD-43	52 ft <sup>2</sup>	0	0	0
TD-44	17 ft <sup>2</sup>	0	0	0
TD-45	13 ft <sup>2</sup>	0	0	0
TD-46	17 ft <sup>2</sup>	0	0	0
TD-47	15 ft <sup>2</sup>	0	0	0
TD-48	51 ft <sup>2</sup>	0	0	0

**Tudor**

Facade	Area	Openings	Shutters	Vents
TD-49	75 ft <sup>2</sup>	0	0	0
TD-50	17 ft <sup>2</sup>	0	0	0
TD-51	13 ft <sup>2</sup>	0	0	0
TD-52	52 ft <sup>2</sup>	0	0	0
TD-53	59 ft <sup>2</sup>	0	0	0
TD-54	168 ft <sup>2</sup>	3	0	0
TD-55	172 ft <sup>2</sup>	3	0	0
TD-56	17 ft <sup>2</sup>	0	0	0
TD-57	15 ft <sup>2</sup>	0	0	0
TD-58	14 ft <sup>2</sup>	0	0	0
<b>Total</b>	<b>3186 ft<sup>2</sup></b>	<b>30</b>	<b>0</b>	<b>0</b>

**Windows**

Opening	Width x Height	United Inches	Area
W-1	22" x 22"	44"	3 ft <sup>2</sup>
W-2	64" x 45"	109"	20 ft <sup>2</sup>
W-3	64" x 45"	109"	20 ft <sup>2</sup>
W-4	64" x 45"	109"	20 ft <sup>2</sup>
W-5	64" x 45"	109"	20 ft <sup>2</sup>
W-6	22" x 22"	44"	3 ft <sup>2</sup>
W-7	64" x 35"	100"	16 ft <sup>2</sup>
W-8	64" x 45"	109"	20 ft <sup>2</sup>
W-9	64" x 35"	100"	16 ft <sup>2</sup>
W-10	64" x 35"	100"	16 ft <sup>2</sup>
W-11	64" x 35"	100"	16 ft <sup>2</sup>
W-12	64" x 45"	109"	20 ft <sup>2</sup>
W-13	22" x 22"	44"	3 ft <sup>2</sup>
W-14	64" x 45"	109"	20 ft <sup>2</sup>
W-15	64" x 45"	109"	20 ft <sup>2</sup>
W-16	64" x 45"	109"	20 ft <sup>2</sup>
W-17	64" x 45"	109"	20 ft <sup>2</sup>

**Doors**

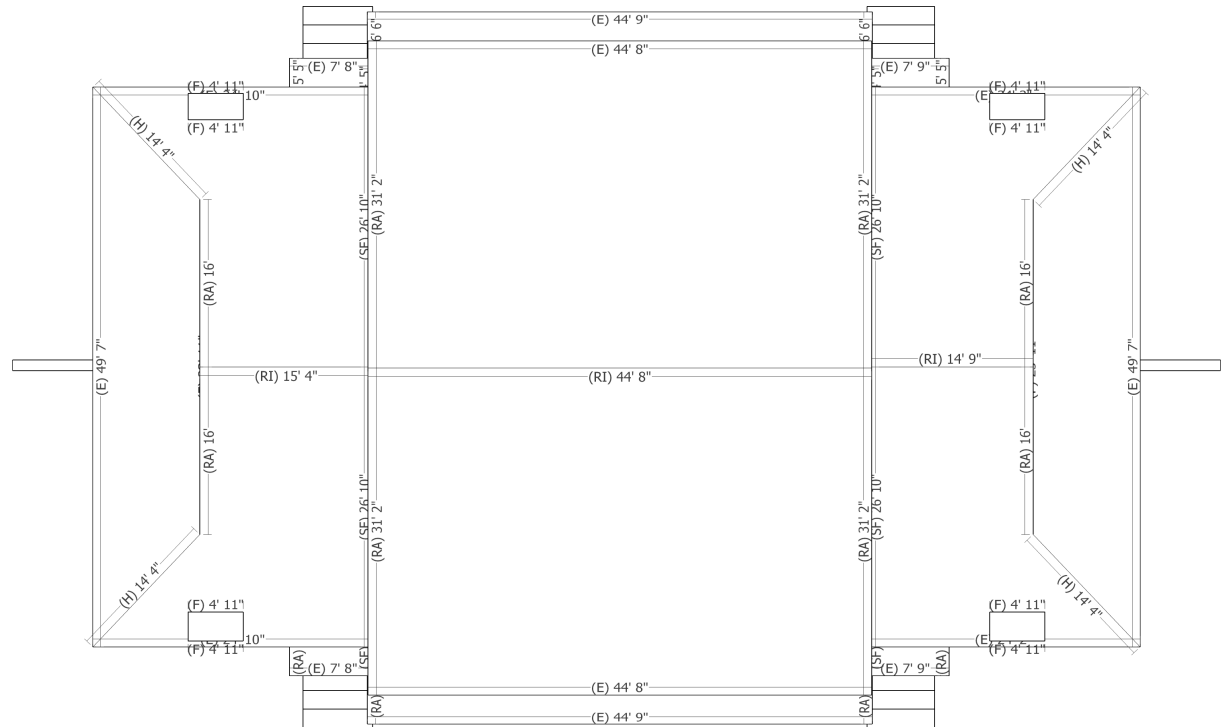
Opening	Width x Height	Area
D-1	36" x 82"	20 ft <sup>2</sup>
D-2	192" x 84"	112 ft <sup>2</sup>
D-3	192" x 84"	112 ft <sup>2</sup>
D-4	36" x 80"	20 ft <sup>2</sup>
D-5	72" x 80"	40 ft <sup>2</sup>
D-6	72" x 80"	40 ft <sup>2</sup>
D-7	36" x 80"	20 ft <sup>2</sup>
D-8	192" x 84"	112 ft <sup>2</sup>
D-9	192" x 84"	112 ft <sup>2</sup>
D-10	36" x 80"	20 ft <sup>2</sup>
D-11	60" x 80"	33 ft <sup>2</sup>
D-12	72" x 80"	40 ft <sup>2</sup>
D-13	72" x 80"	40 ft <sup>2</sup>
D-14	60" x 80"	33 ft <sup>2</sup>
Total	-	754 ft <sup>2</sup>

**Windows (cont.)**

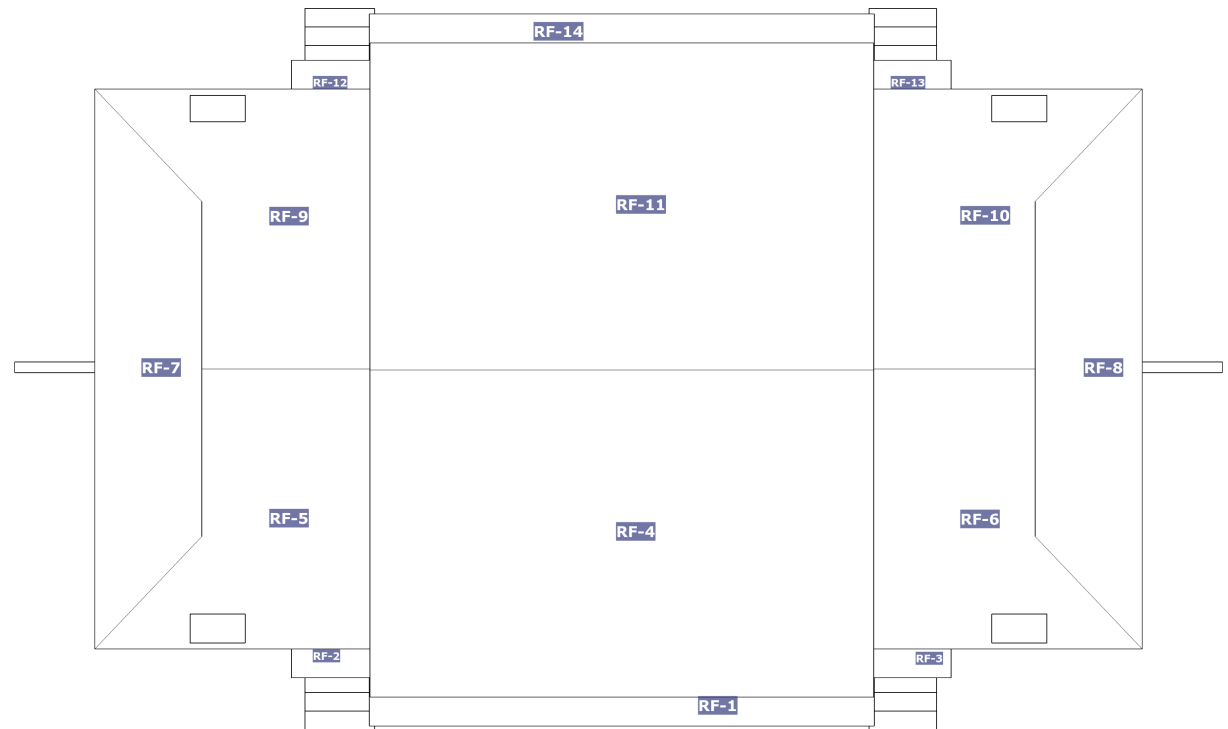
Opening	Width x Height	United Inches	Area
W-18	22" x 22"	44"	3 ft <sup>2</sup>
W-19	64" x 45"	109"	20 ft <sup>2</sup>
W-20	64" x 35"	100"	16 ft <sup>2</sup>
W-21	64" x 35"	100"	16 ft <sup>2</sup>
W-22	64" x 45"	109"	20 ft <sup>2</sup>
Total	-	2082"	348 ft <sup>2</sup>

Roof	Length
Ridges (RI)	74' 8"
Hips (H)	57' 5"
Valleys (V)	-
Rakes (RA)	240' 4"
Gutters / Eaves (E)	408' 10"
Flashing (F)*	205' 7"
Step Flashing (SF)*	148' 8"

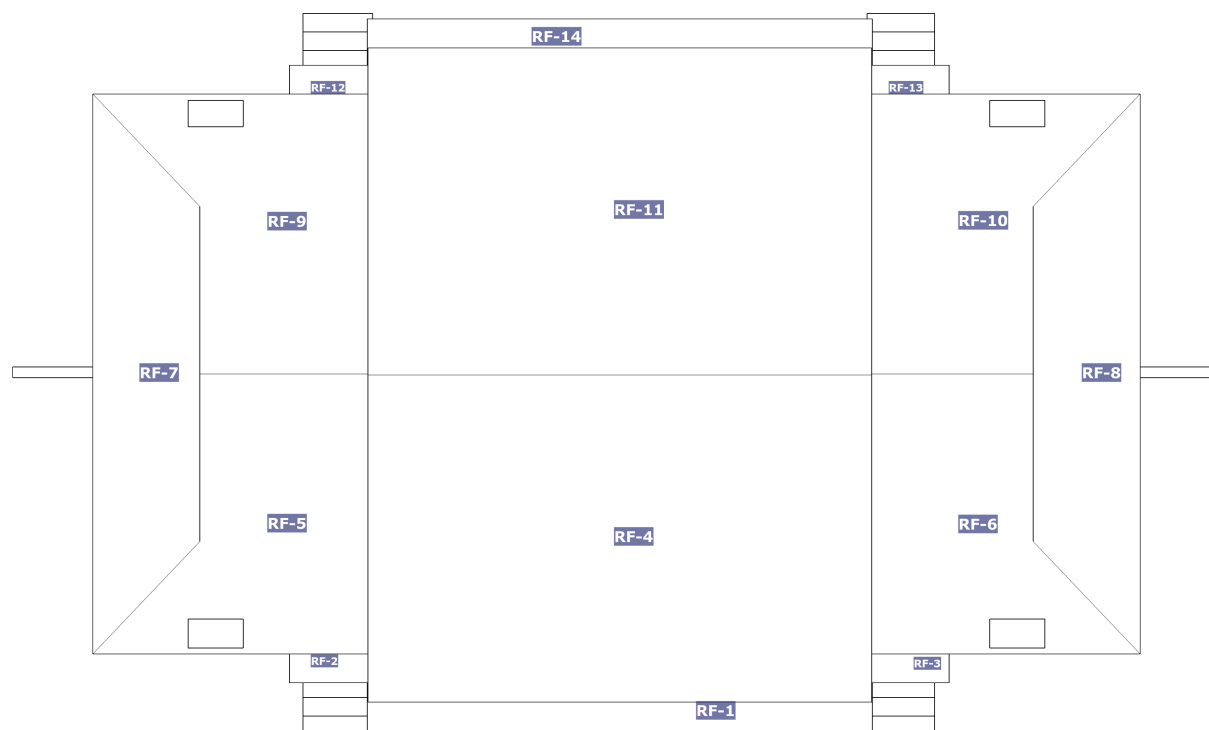
\*Flashing and Step Flashing information are better accessible on the 3D reconstruction for this job



Facet	Area	Pitch
RF-1	268 ft <sup>2</sup>	8/12
RF-2	40 ft <sup>2</sup>	5/12
RF-3	40 ft <sup>2</sup>	5/12
RF-4	1392 ft <sup>2</sup>	5/12
RF-5	448 ft <sup>2</sup>	5/12
RF-6	432 ft <sup>2</sup>	5/12
RF-7	434 ft <sup>2</sup>	5/12
RF-8	434 ft <sup>2</sup>	5/12
RF-9	449 ft <sup>2</sup>	5/12
RF-10	433 ft <sup>2</sup>	5/12
RF-11	1392 ft <sup>2</sup>	5/12
RF-12	40 ft <sup>2</sup>	5/12

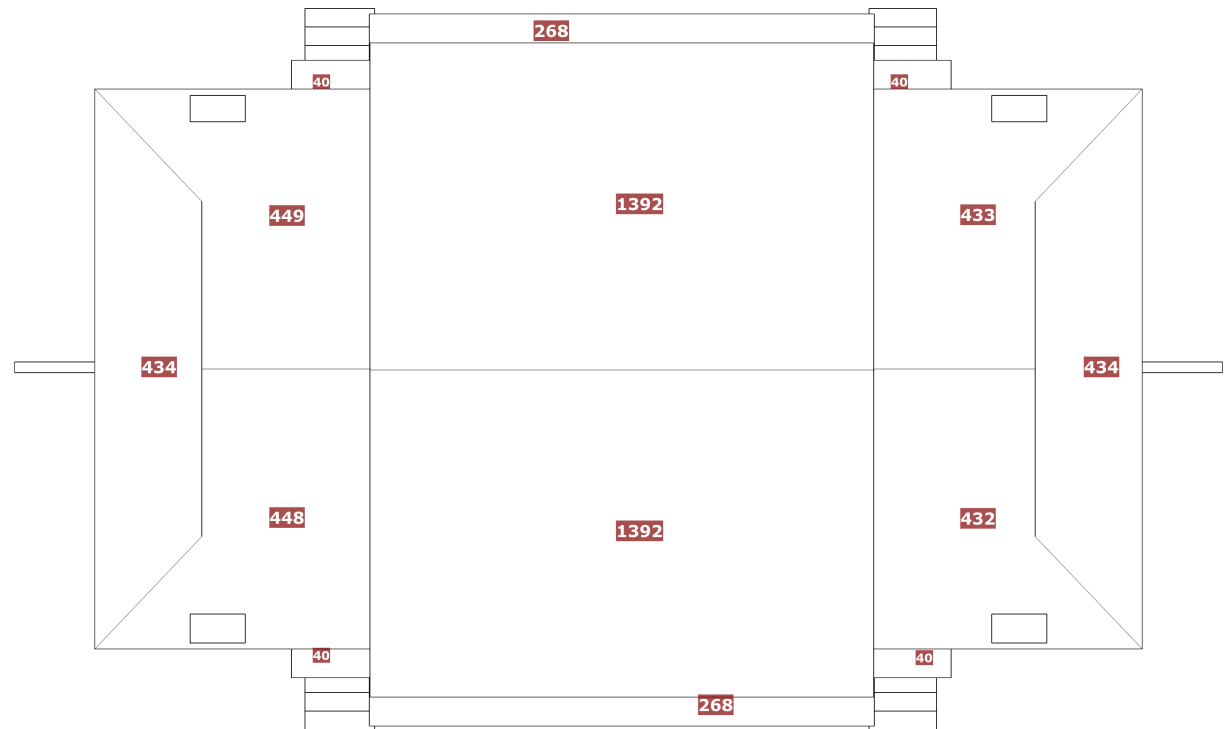


Facet	Area	Pitch
RF-13	40 ft <sup>2</sup>	5/12
RF-14	268 ft <sup>2</sup>	8/12





Roof	Facets	Total
Roof Facets	14	6111 ft <sup>2</sup>



Roof Pitch	Area	Percentage
5/12	5576 ft <sup>2</sup>	91.24%
8/12	535 ft <sup>2</sup>	8.76%

