



[VIEW 3D MODEL](#)

Areas	Siding	Other
Facades	0 ft ²	4842 ft ²
Openings	0 ft ²	1180 ft ²
Trims*	0 ft ²	39 ft ²
Unknown (no photos)*	0 ft ²	0 ft ²
Total	0 ft²	6061 ft²

*Any trim or unknown material that touches siding is included in the 'Siding' column. If it does not touch siding, then it's included in the 'Other' column.

Openings	Siding	Other
Quantity	0	44
Tops Length	-	233' 5"
Sills Length	-	167' 8"
Sides Length	-	362' 10"
Total Perimeter	-	763' 11"

Siding Waste Factor*	Area	Squares
Zero Waste	0 ft ²	0¼
+10%	0 ft ²	0¼
+18%	0 ft ²	0¼
With Openings	0 ft ²	0¼
Openings +10%	0 ft ²	0¼
Openings +18%	0 ft ²	0¼

*The first three rows of the Siding Waste Factor table are calculated using the total ft² of siding facades, ft² of trim touching siding, and ft² of unknowns touching siding.

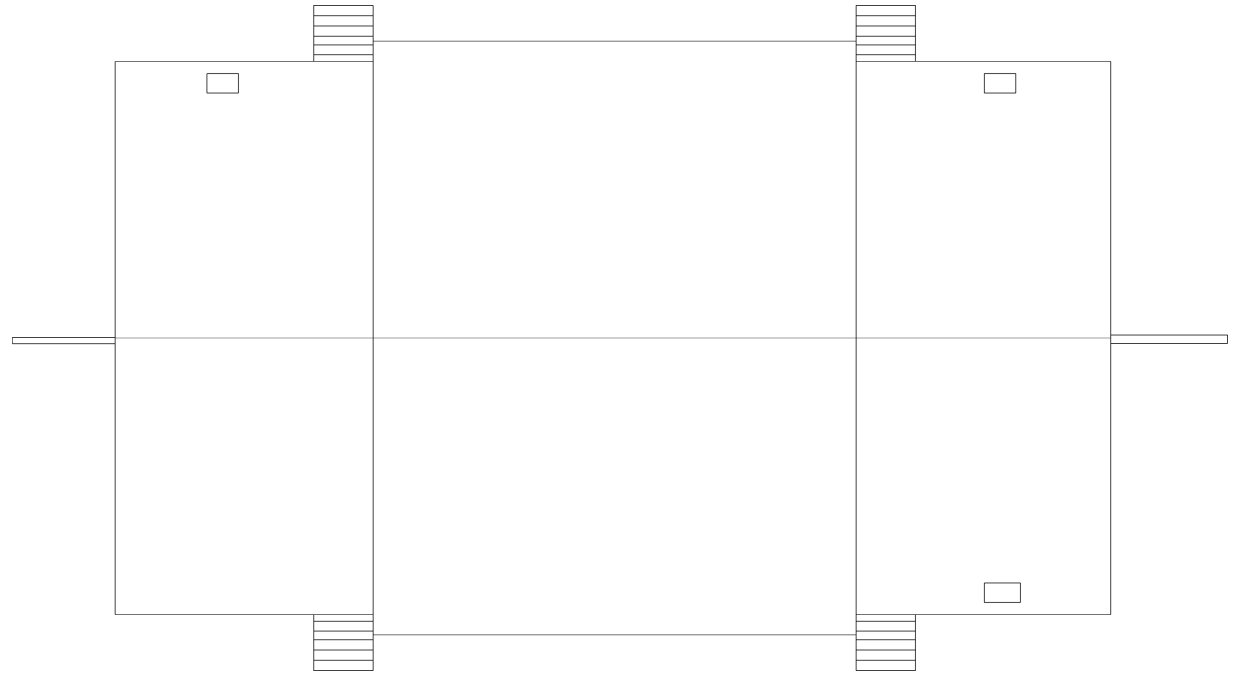
Trim	Siding	Other
Level Starter	-	497' 11"
Sloped Trim	-	27' 8"
Vertical Trim	-	1157' 2"

Roofline	Length	Avg. Depth	Soffit Area
Eaves Fascia (Gutters)	183' 5"	-	-
Level Frieze Board	266' 11"	1' 7"	726 ft ²
Rakes Fascia	222' 3"	-	-
Sloped Frieze Board	115' 7"	1' 5"	403 ft ²

Corners	Siding	Other
Inside Qty	0	-
Inside Length	-	-
Outside Qty	0	-
Outside Length	-	-

Accessories	Siding	Other
Shutter Qty	0	0
Shutter Area	0 ft ²	0 ft ²
Vents Qty	0	0
Vents Area	0 ft ²	0 ft ²

Roof	Area	Total	Length
Roof facets	5074 ft ²	6	-
Ridges / Hips	-	3	91' 9"
Valleys	-	0	-
Rakes	-	8	222' 3"
Gutters / Eaves	-	6	183' 5"
Flashing	-	6	18' 3"
Step Flashing	-	6	11' 3"

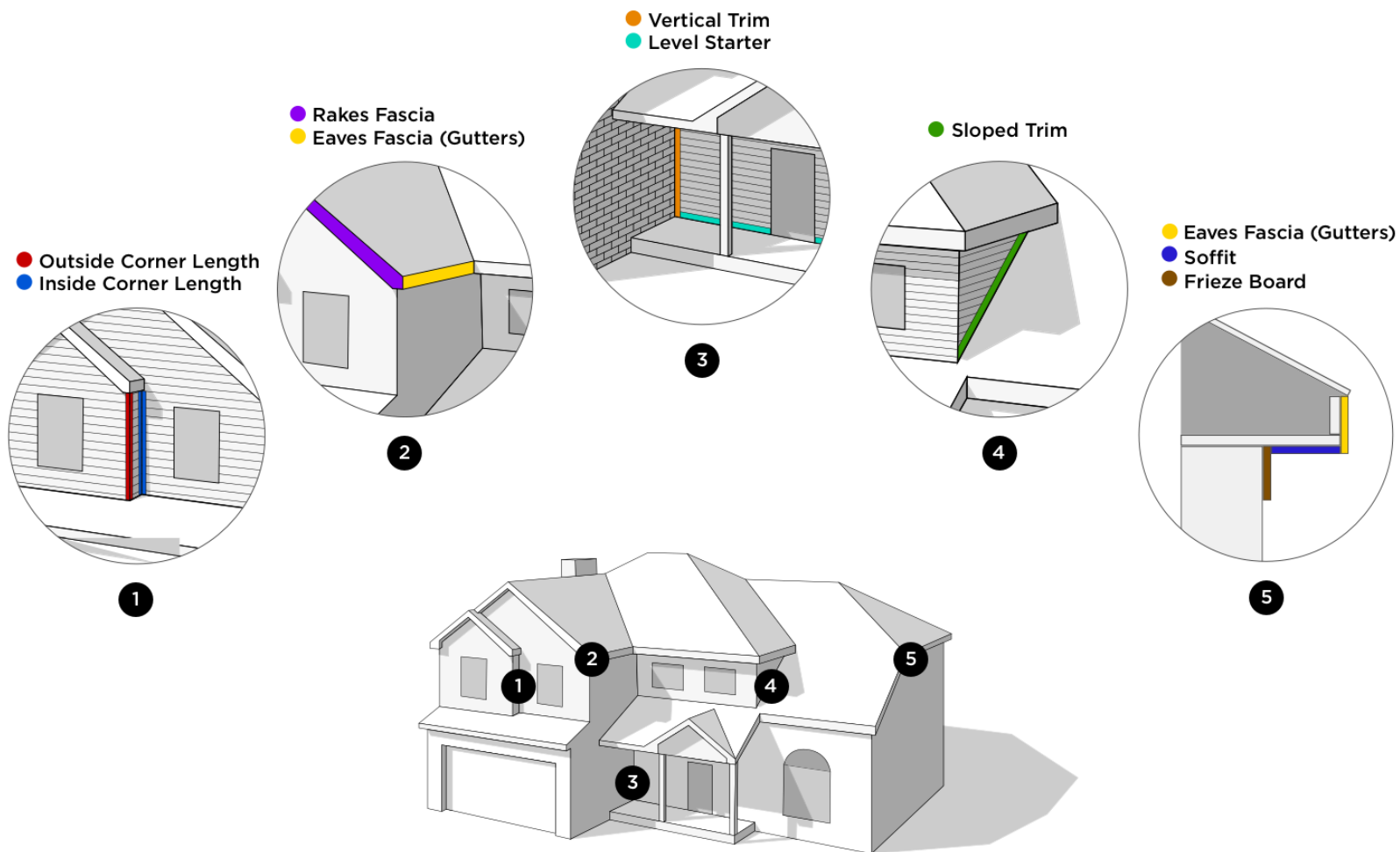


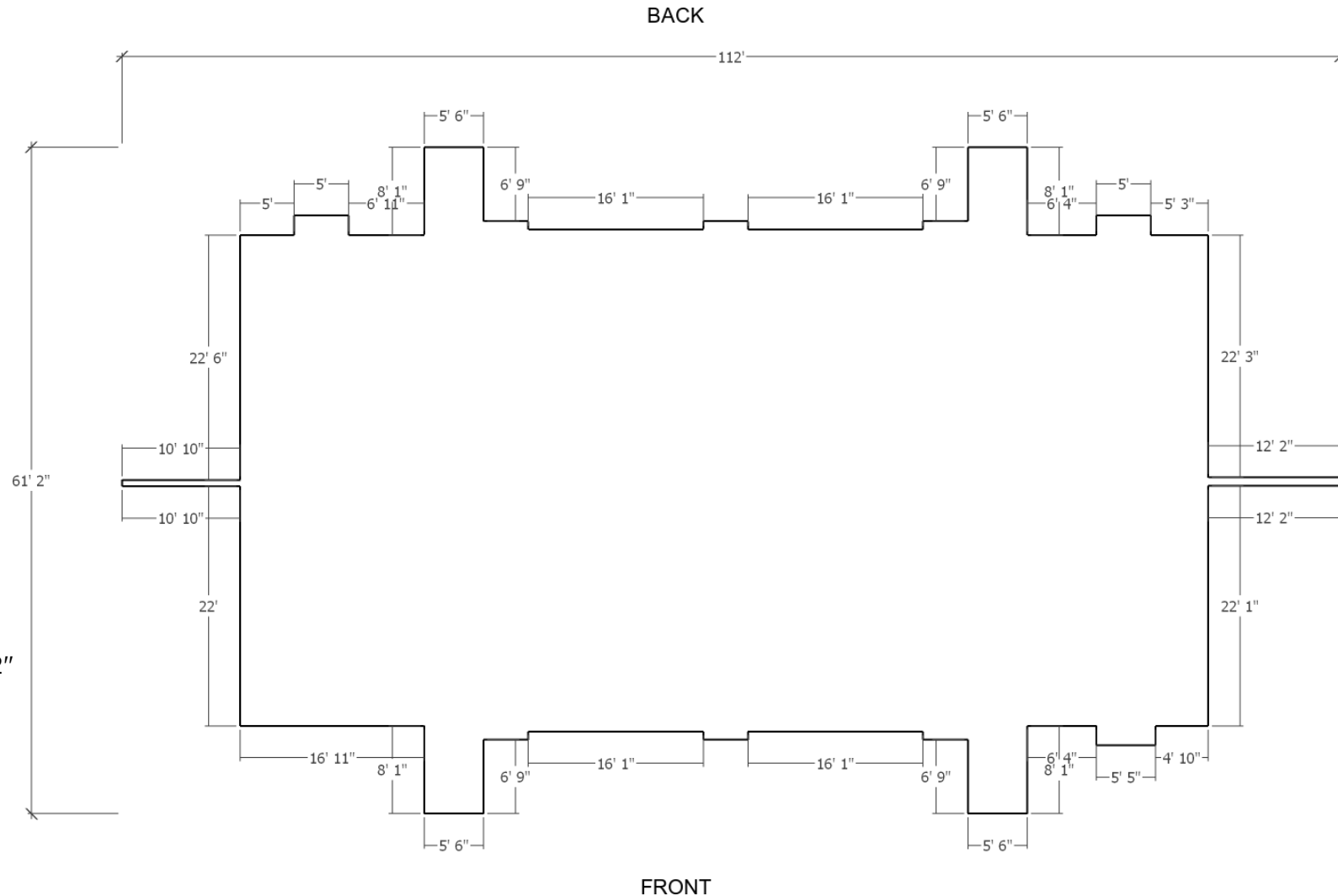
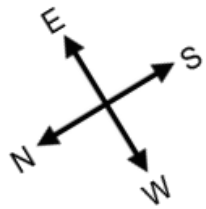
Roof Pitch	Area	Percentage
4/12	5074 ft ²	100.0%

Waste Factor Calculation

	Zero Waste	+5%	+10%	+15%	+20%
Area	5074 ft ²	5328 ft ²	5581 ft ²	5835 ft ²	6089 ft ²
Squares	51	53½	56	58⅓	61

The table above provides the total roof area of a given property using waste percentages as noted. Please consider that area values and specific waste factors can be influenced by the size and complexity of the property, captured image quality, specific roofing techniques, and your own level of expertise. Ridge, hip, valley, and starter lengths are not included and may require additional material.

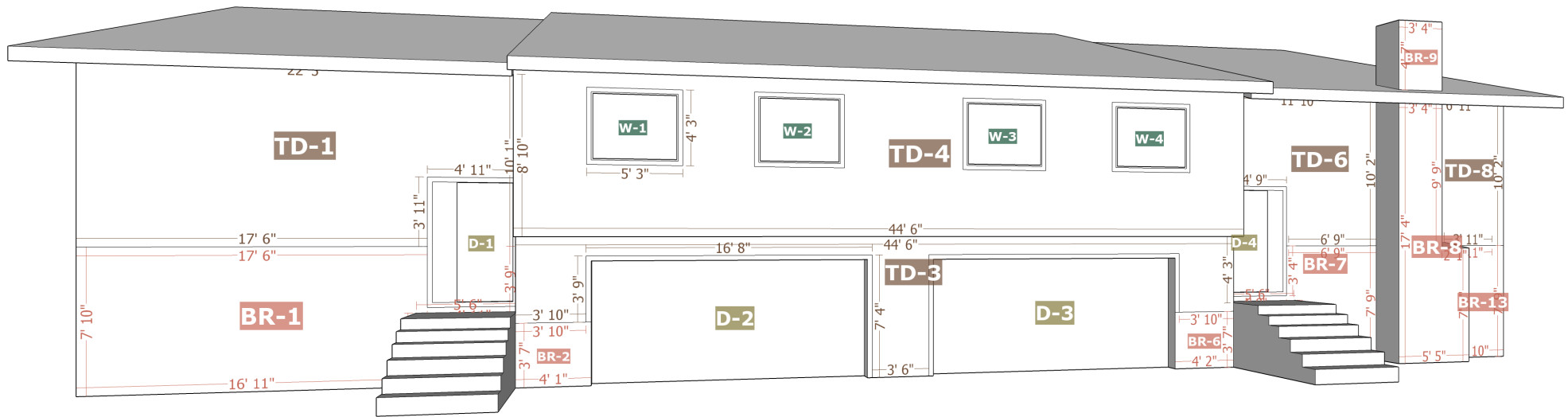
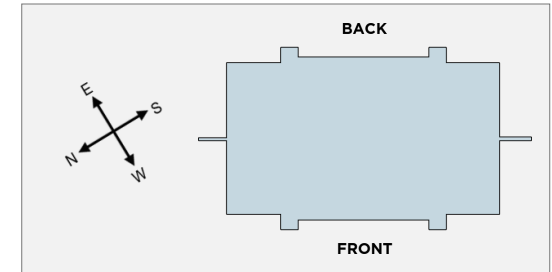


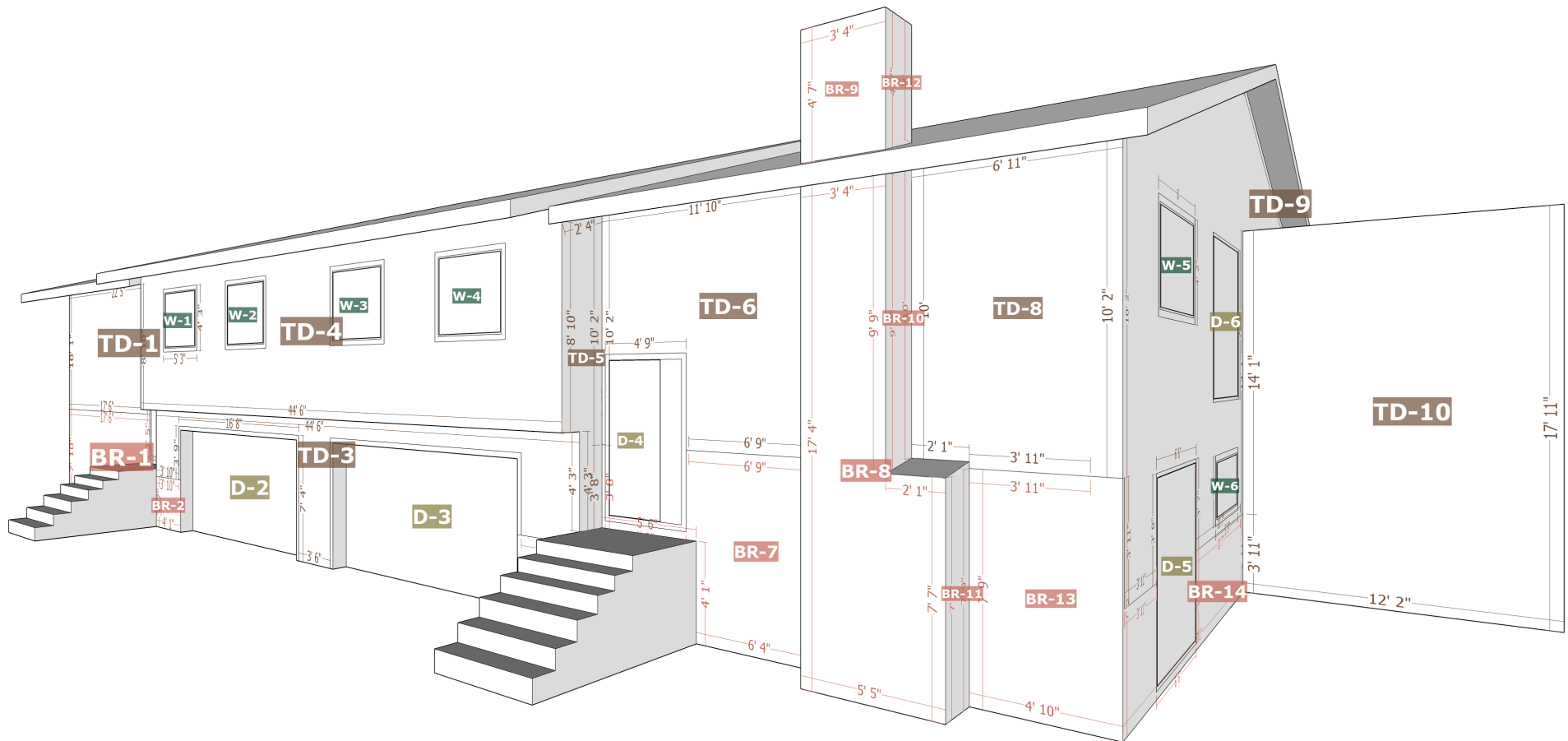
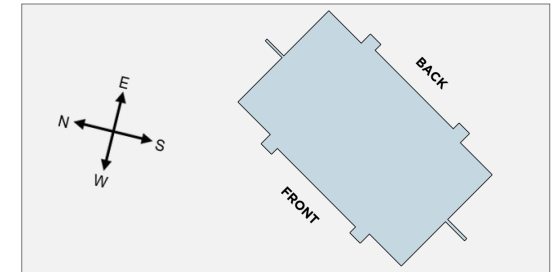


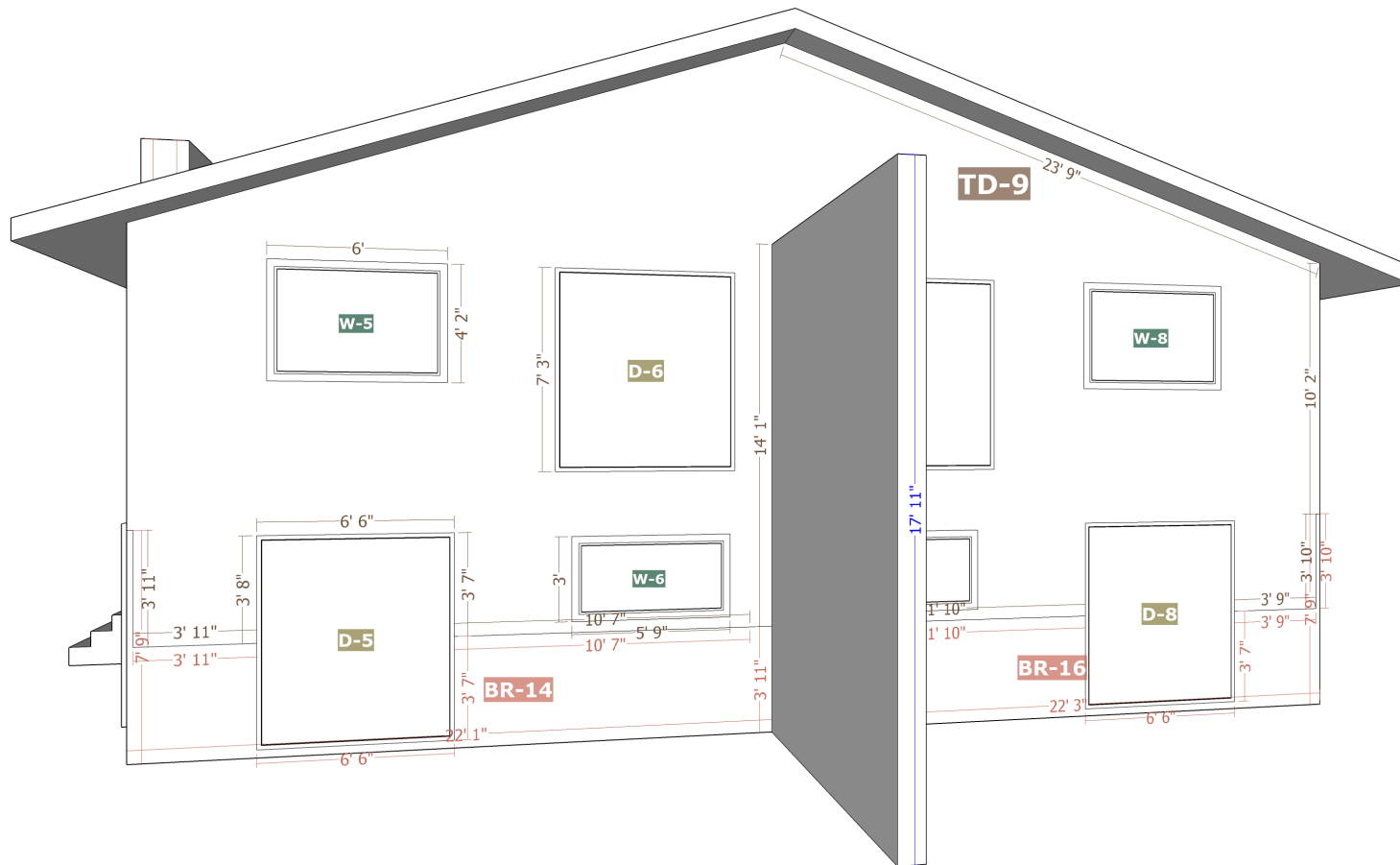
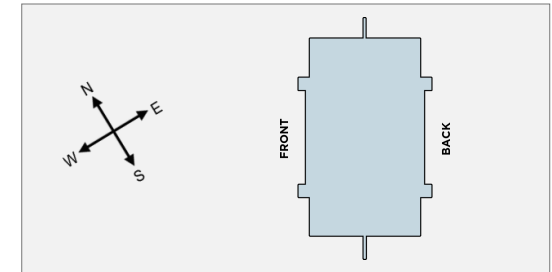
Number of Stories: >1

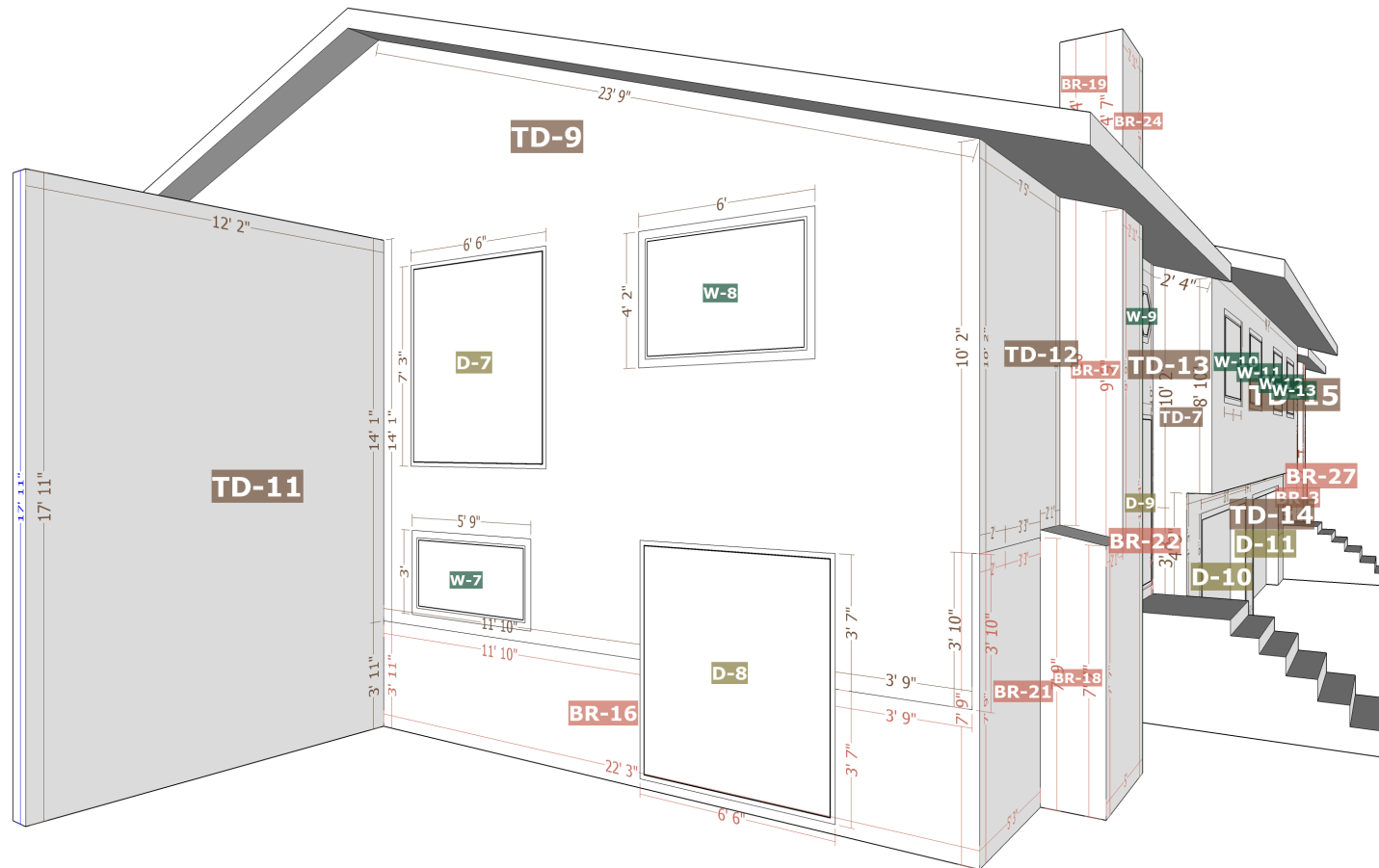
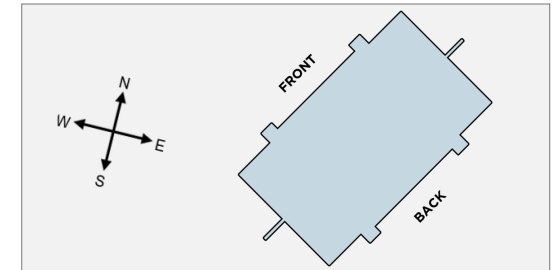
Footprint Perimeter: 390' 2"

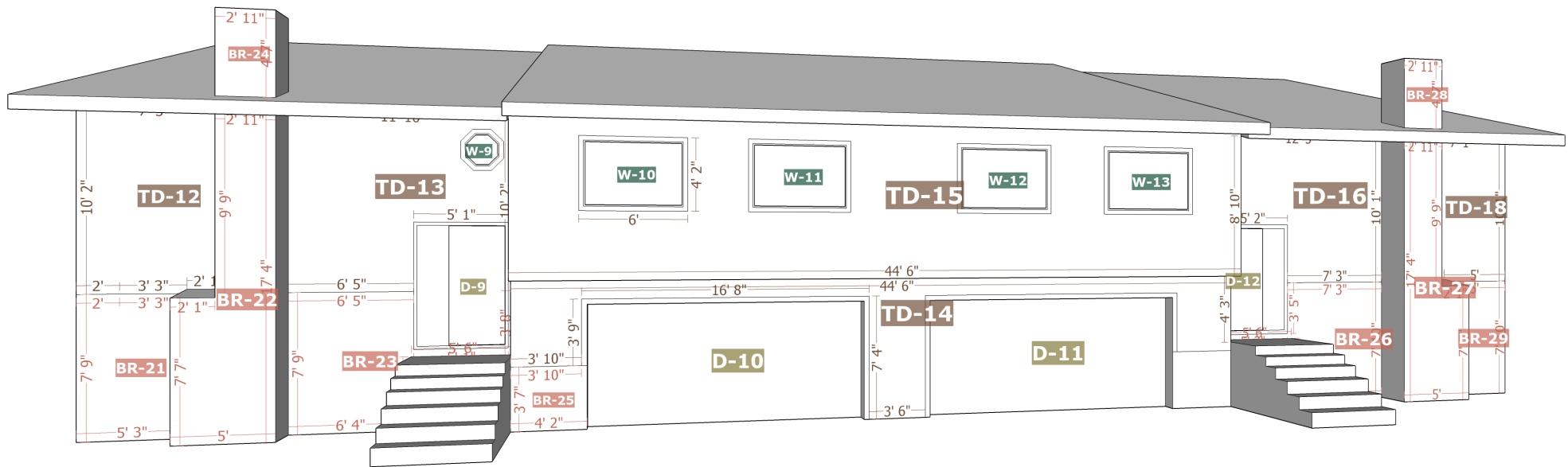
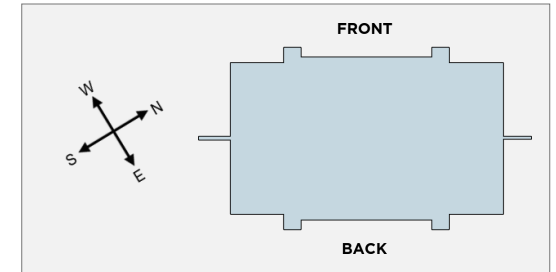
Footprint Area: 4295 ft²

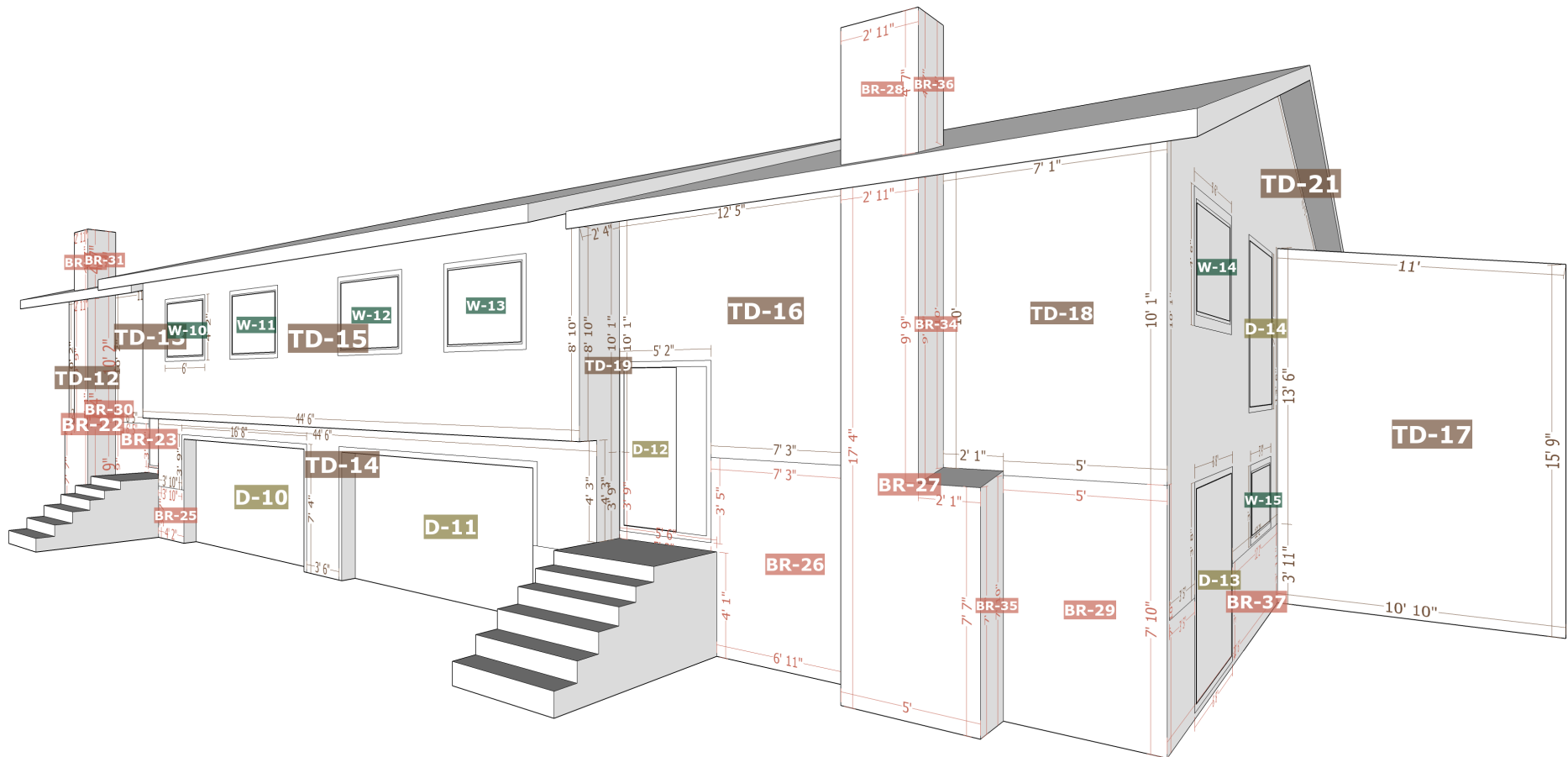
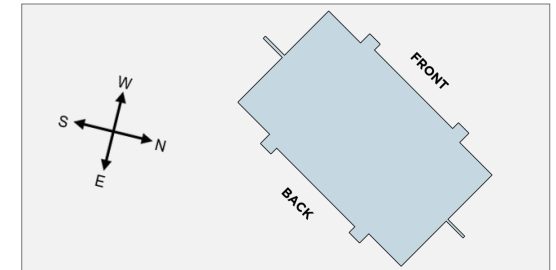


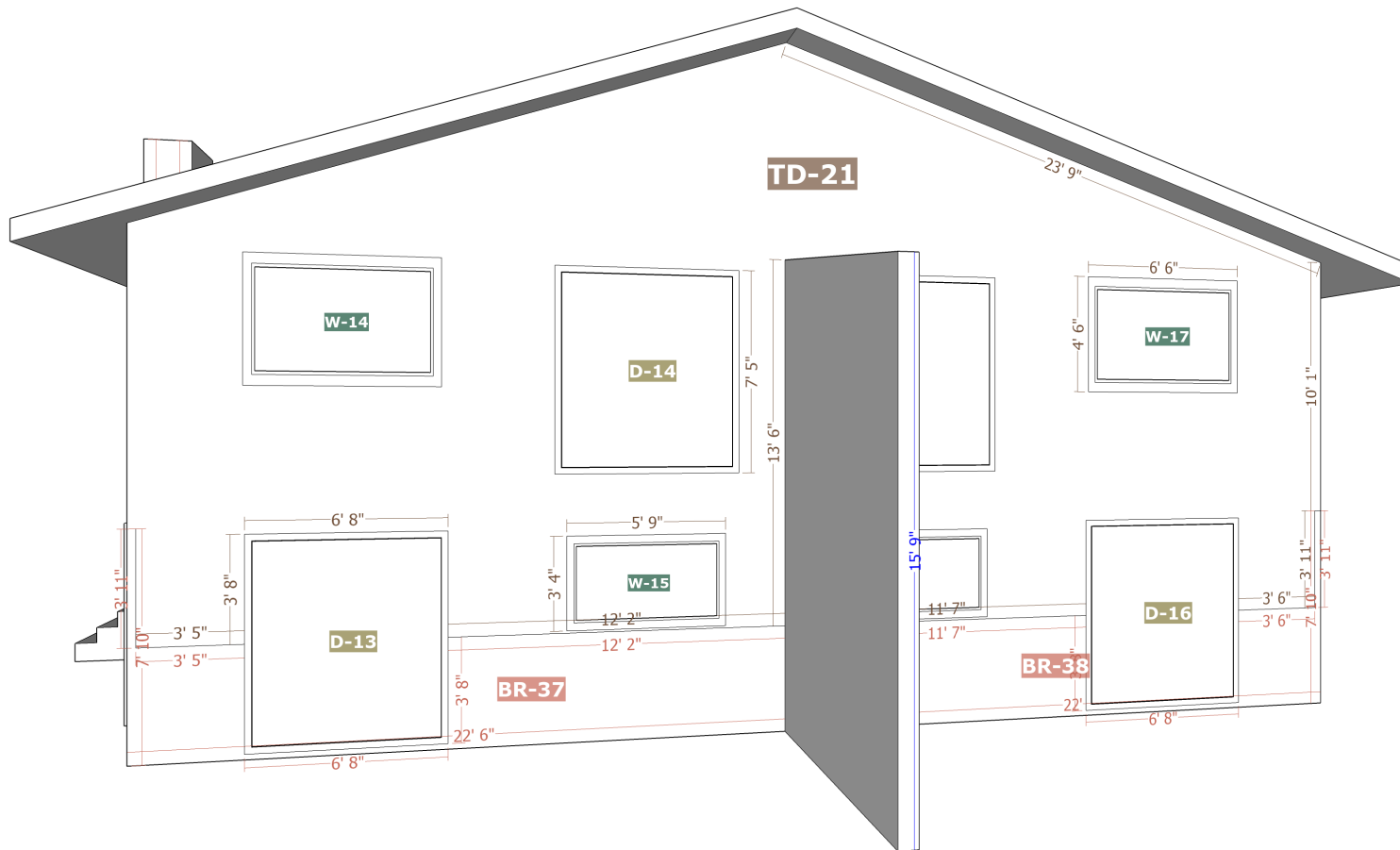
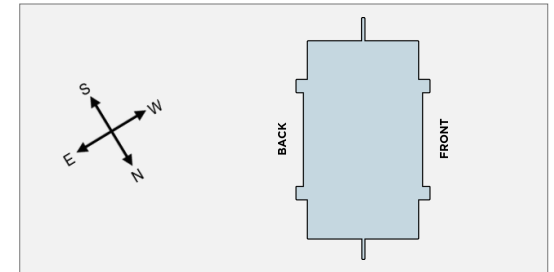


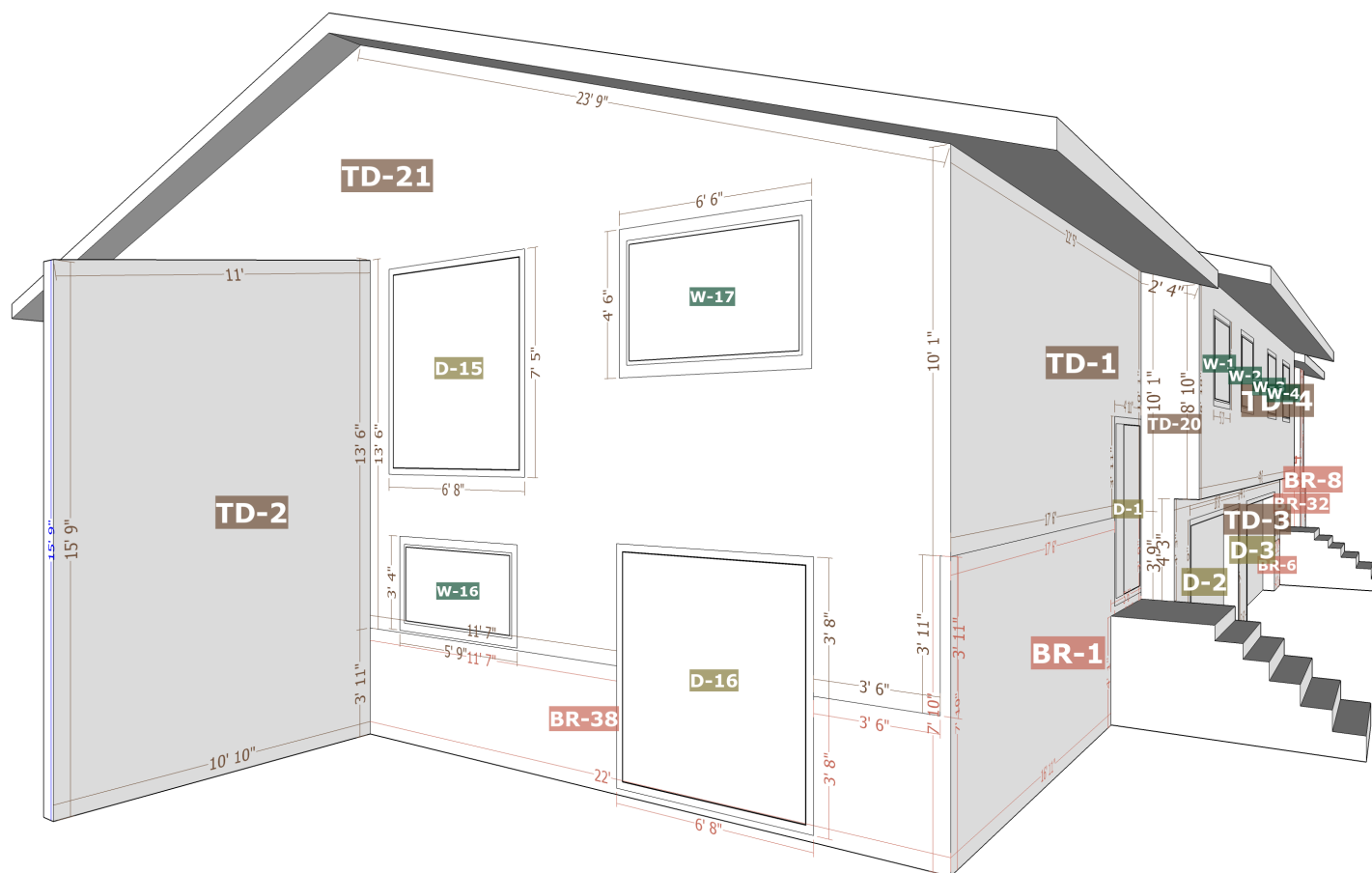
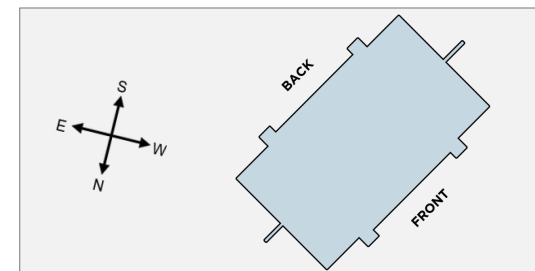












Brick

Facade	Area	Openings	Shutters	Vents
BR-1	136 ft ²	0	0	0
BR-2	15 ft ²	0	0	0
BR-3	32 ft ²	0	0	0
BR-4	12 ft ²	0	0	0
BR-5	8 ft ²	0	0	0
BR-6	15 ft ²	0	0	0
BR-7	53 ft ²	0	0	0
BR-8	74 ft ²	0	0	0
BR-9	15 ft ²	0	0	0
BR-10	18 ft ²	0	0	0
BR-11	14 ft ²	0	0	0
BR-12	8 ft ²	0	0	0
BR-13	38 ft ²	0	0	0
BR-14	63 ft ²	0	0	0
BR-15	12 ft ²	0	0	0
BR-16	64 ft ²	1	0	0

Brick

Facade	Area	Openings	Shutters	Vents
BR-17	18 ft ²	0	0	0
BR-18	14 ft ²	0	0	0
BR-19	8 ft ²	0	0	0
BR-20	13 ft ²	0	0	0
BR-21	41 ft ²	0	0	0
BR-22	66 ft ²	0	0	0
BR-23	53 ft ²	0	0	0
BR-24	13 ft ²	0	0	0
BR-25	15 ft ²	0	0	0
BR-26	57 ft ²	0	0	0
BR-27	66 ft ²	0	0	0
BR-28	13 ft ²	0	0	0
BR-29	39 ft ²	0	0	0
BR-30	32 ft ²	0	0	0
BR-31	8 ft ²	0	0	0
BR-32	32 ft ²	0	0	0

Brick

Facade	Area	Openings	Shutters	Vents
BR-33	8 ft ²	0	0	0
BR-34	18 ft ²	0	0	0
BR-35	14 ft ²	0	0	0
BR-36	8 ft ²	0	0	0
BR-37	64 ft ²	1	0	0
BR-38	62 ft ²	1	0	0
BR-39	4 ft ²	0	0	0
BR-40	4 ft ²	0	0	0
BR-41	4 ft ²	0	0	0
Total	1251 ft²	3	0	0

Tudor

Facade	Area	Openings	Shutters	Vents
TD-1	207 ft ²	1	0	0
TD-2	180 ft ²	0	0	0
TD-3	103 ft ²	2	0	0
TD-4	330 ft ²	4	0	0
TD-5	26 ft ²	0	0	0
TD-6	102 ft ²	1	0	0
TD-7	26 ft ²	0	0	0
TD-8	70 ft ²	0	0	0
TD-9	563 ft ²	7	0	0
TD-10	218 ft ²	0	0	0
TD-11	218 ft ²	0	0	0
TD-12	75 ft ²	0	0	0
TD-13	96 ft ²	2	0	0
TD-14	102 ft ²	2	0	0
TD-15	321 ft ²	4	0	0
TD-16	106 ft ²	1	0	0

Tudor

Facade	Area	Openings	Shutters	Vents
TD-17	180 ft ²	0	0	0
TD-18	71 ft ²	0	0	0
TD-19	26 ft ²	0	0	0
TD-20	26 ft ²	0	0	0
TD-21	545 ft ²	6	0	0
Total	3591 ft²	30	0	0

Windows

Opening	Width x Height	United Inches	Area
W-1	60" x 48"	108"	20 ft ²
W-2	60" x 48"	108"	20 ft ²
W-3	60" x 48"	108"	20 ft ²
W-4	60" x 48"	108"	20 ft ²
W-5	70" x 47"	117"	23 ft ²
W-6	66" x 35"	101"	16 ft ²
W-7	66" x 35"	101"	16 ft ²
W-8	70" x 47"	117"	23 ft ²
W-9	25" x 25"	50"	4 ft ²
W-10	70" x 47"	117"	23 ft ²
W-11	70" x 47"	117"	23 ft ²
W-12	70" x 47"	117"	23 ft ²
W-13	70" x 47"	117"	23 ft ²
W-14	70" x 47"	117"	23 ft ²
W-15	66" x 35"	101"	16 ft ²
W-16	66" x 35"	101"	16 ft ²
W-17	70" x 47"	117"	23 ft ²

Doors

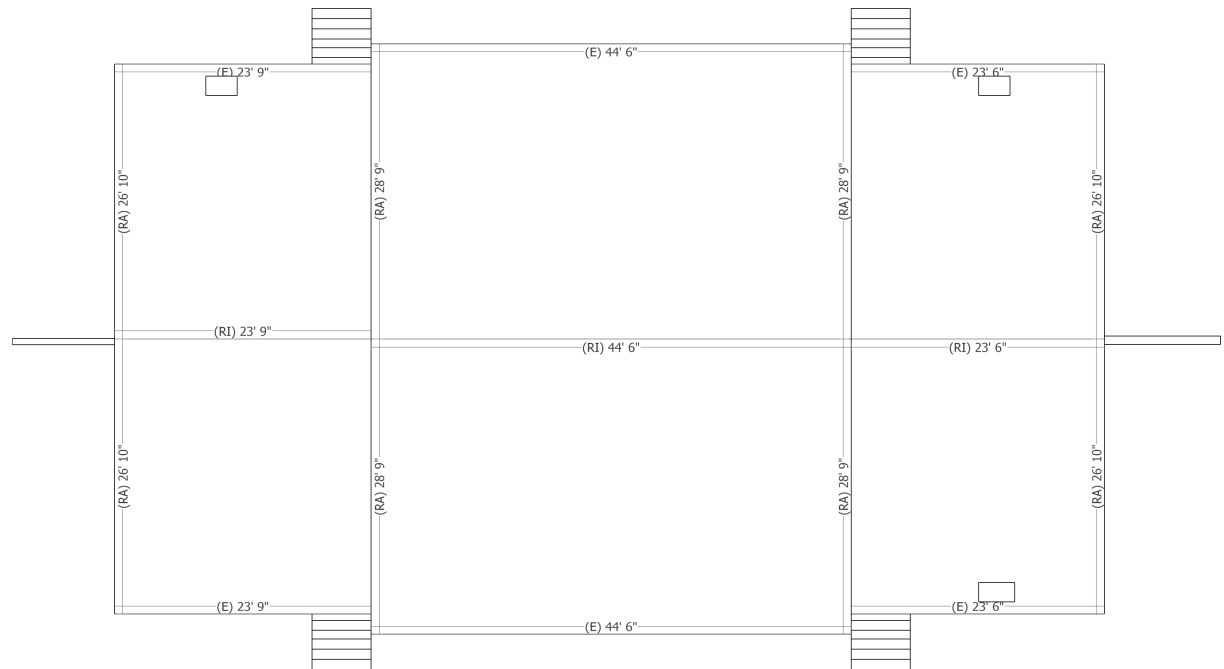
Opening	Width x Height	Area
D-1	36" x 80"	20 ft ²
D-2	192" x 84"	112 ft ²
D-3	192" x 84"	112 ft ²
D-4	36" x 80"	20 ft ²
D-5	72" x 80"	40 ft ²
D-6	72" x 80"	40 ft ²
D-7	72" x 80"	40 ft ²
D-8	72" x 80"	40 ft ²
D-9	36" x 80"	20 ft ²
D-10	192" x 84"	112 ft ²
D-11	192" x 84"	112 ft ²
D-12	36" x 80"	20 ft ²
D-13	72" x 80"	40 ft ²
D-14	72" x 80"	40 ft ²
D-15	72" x 80"	40 ft ²
D-16	72" x 80"	40 ft ²
Total	-	848 ft²

Windows (cont.)

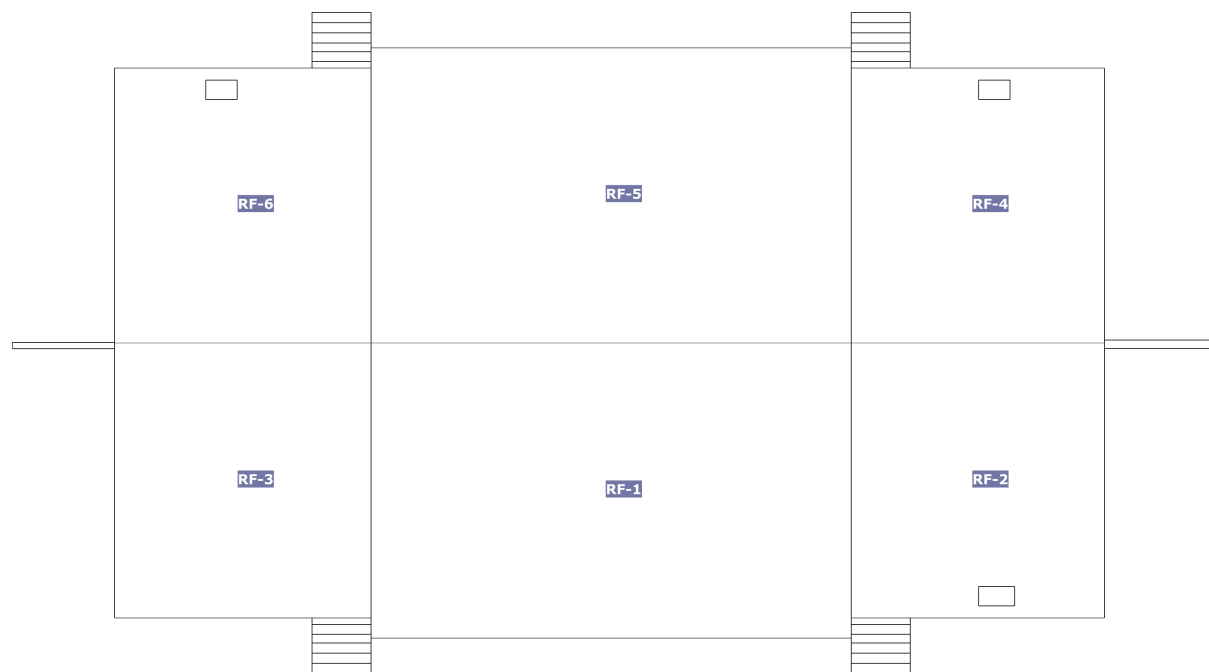
Opening	Width x Height	United Inches	Area
Total	-	1824"	332 ft ²

Roof	Length
Ridges (RI)	91' 9"
Hips (H)	-
Valleys (V)	-
Rakes (RA)	222' 3"
Gutters / Eaves (E)	183' 5"
Flashing (F)*	18' 3"
Step Flashing (SF)*	11' 3"

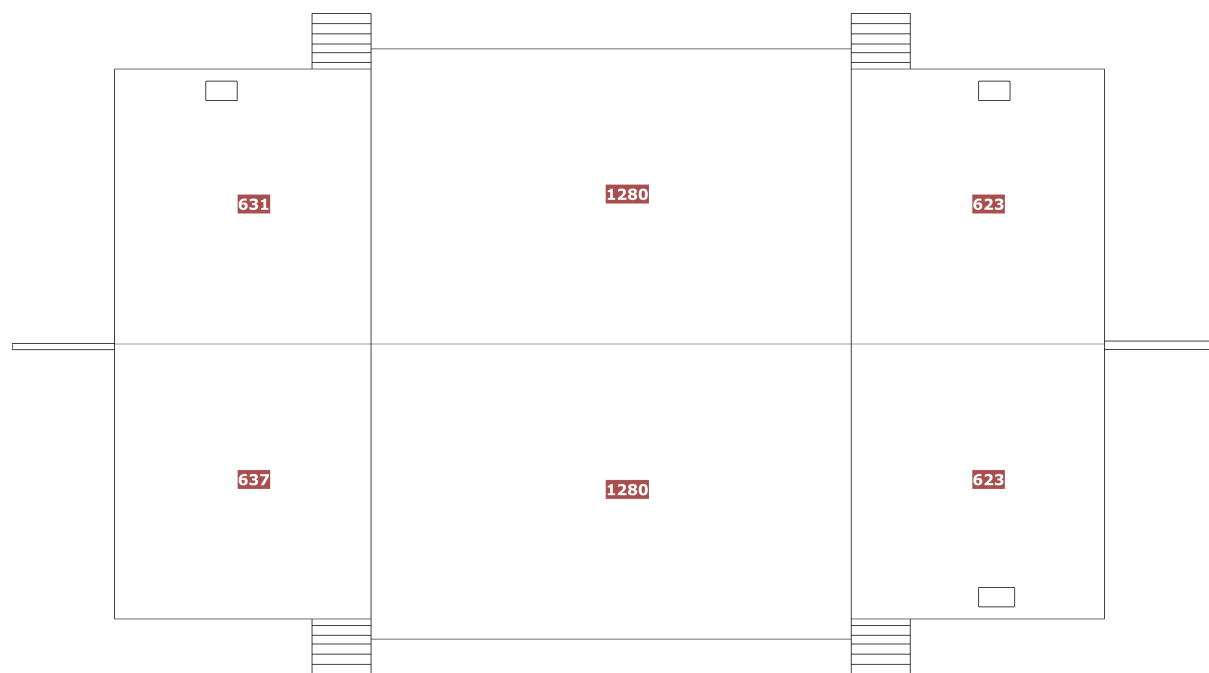
*Flashing and Step Flashing information are better accessible on the 3D reconstruction for this job



Facet	Area	Pitch
RF-1	1280 ft ²	4/12
RF-2	623 ft ²	4/12
RF-3	637 ft ²	4/12
RF-4	623 ft ²	4/12
RF-5	1280 ft ²	4/12
RF-6	631 ft ²	4/12



Roof	Facets	Total
Roof Facets	6	5074 ft ²



Roof Pitch	Area	Percentage
4/12	5074 ft ²	100.0%

