

In this 3D model, facets appear as semi-transparent to reveal overhangs.

PREPARED FOR

Contact: Tony Tompkins
Company: ABC Supply Co.
Address: 5130 Industrial St
Maple Plain, MN 55359-8004
Phone: 763-479-2966

TABLE OF CONTENTS

Images	1
Length Diagram	4
Pitch Diagram	5
Area Diagram	6
Notes Diagram	7
Penetrations Diagram	8
Report Summary	9

MEASUREMENTS

Total Roof Area = 6,391 sq ft
Total Roof Facets = 14
Predominant Pitch = 5/12
Number of Stories > 1
Total Ridges/Hips = 135 ft
Total Valleys = 0 ft
Total Rakes = 239 ft
Total Eaves = 413 ft
Total Penetrations = 56
Total Penetrations Perimeter = 270 ft
Total Penetrations Area = 122 sq ft

Measurements provided by www.eagleview.com



Certified Accurate

www.eagleview.com/Guarantee.aspx

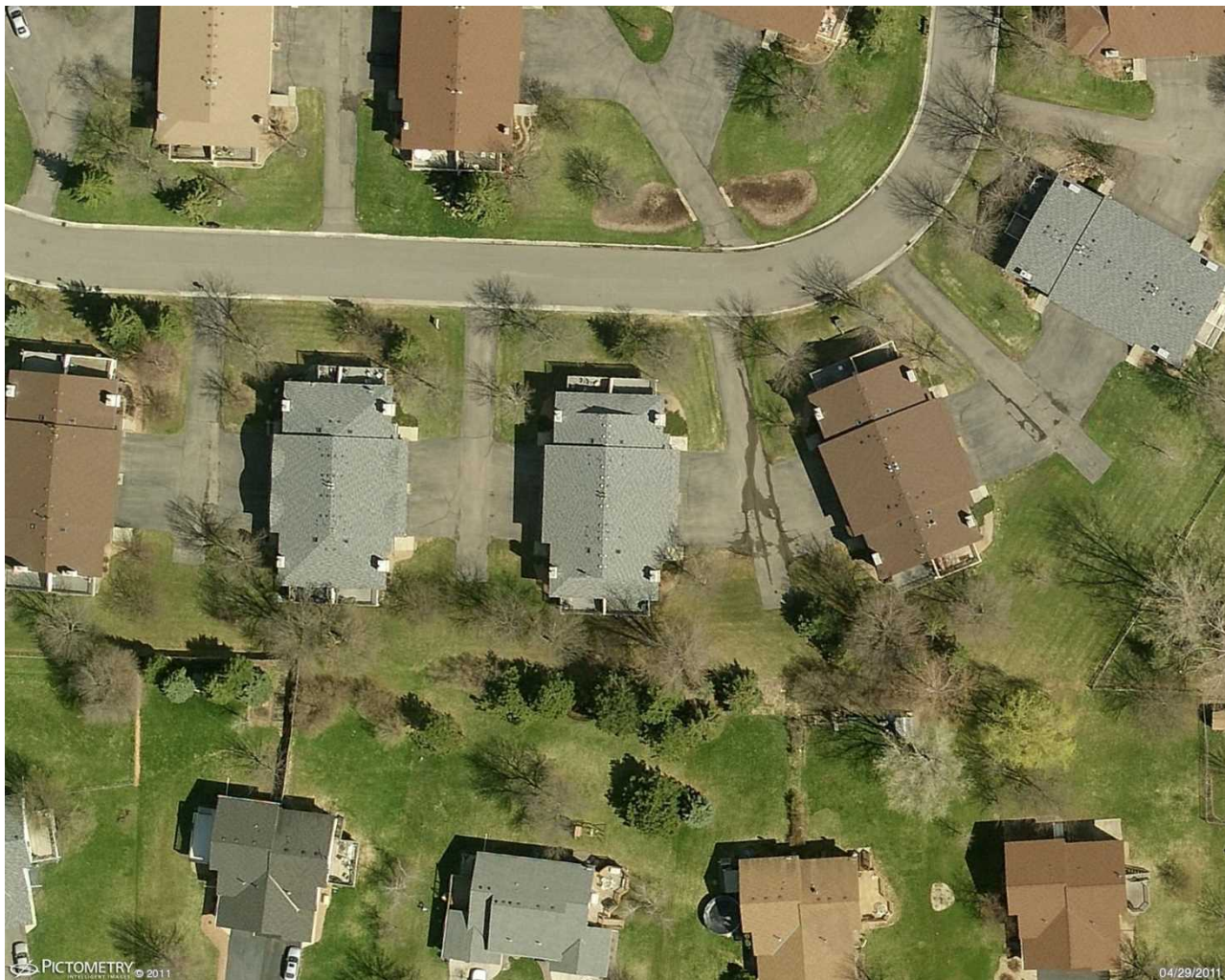
7231 Pontiac Cir, Chanhassen, MN 55317-9454

Report: 26808830

IMAGES

The following aerial images show different angles of this structure for your reference.

Top View



7231 Pontiac Cir, Chanhassen, MN 55317-9454

Report: 26808830

IMAGES

North Side



South Side



7231 Pontiac Cir, Chanhassen, MN 55317-9454

Report: 26808830

IMAGES

East Side



West Side

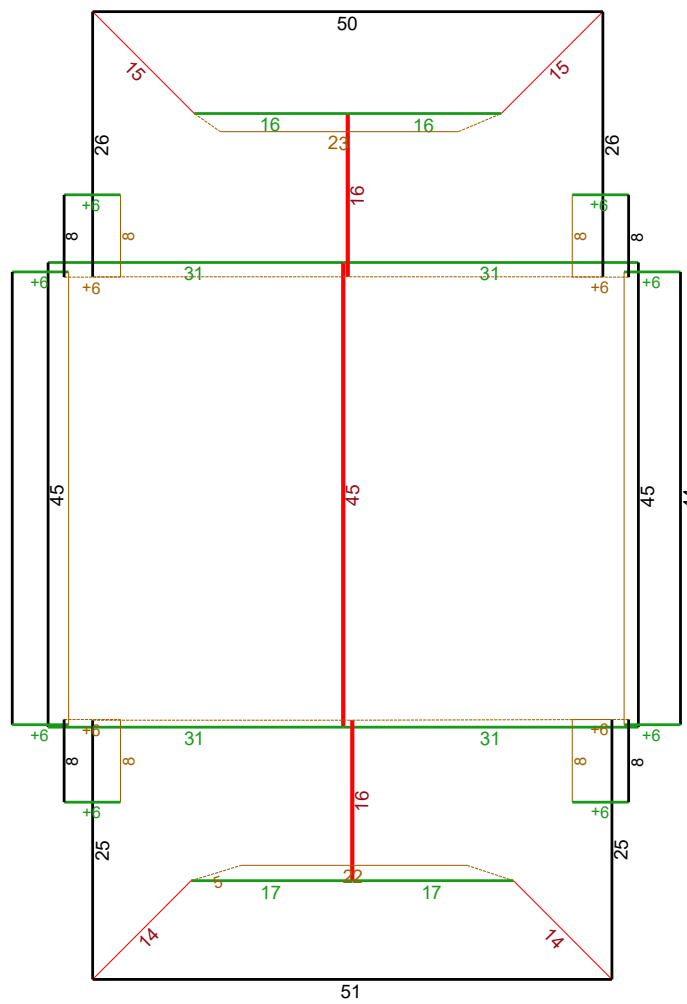


LENGTH DIAGRAM

Total Line Lengths:

Ridges = 77 ft
Hips = 58 ft

 Valleys = 0 ft
 Rakes = 239 ft
 Eaves = 413 ft

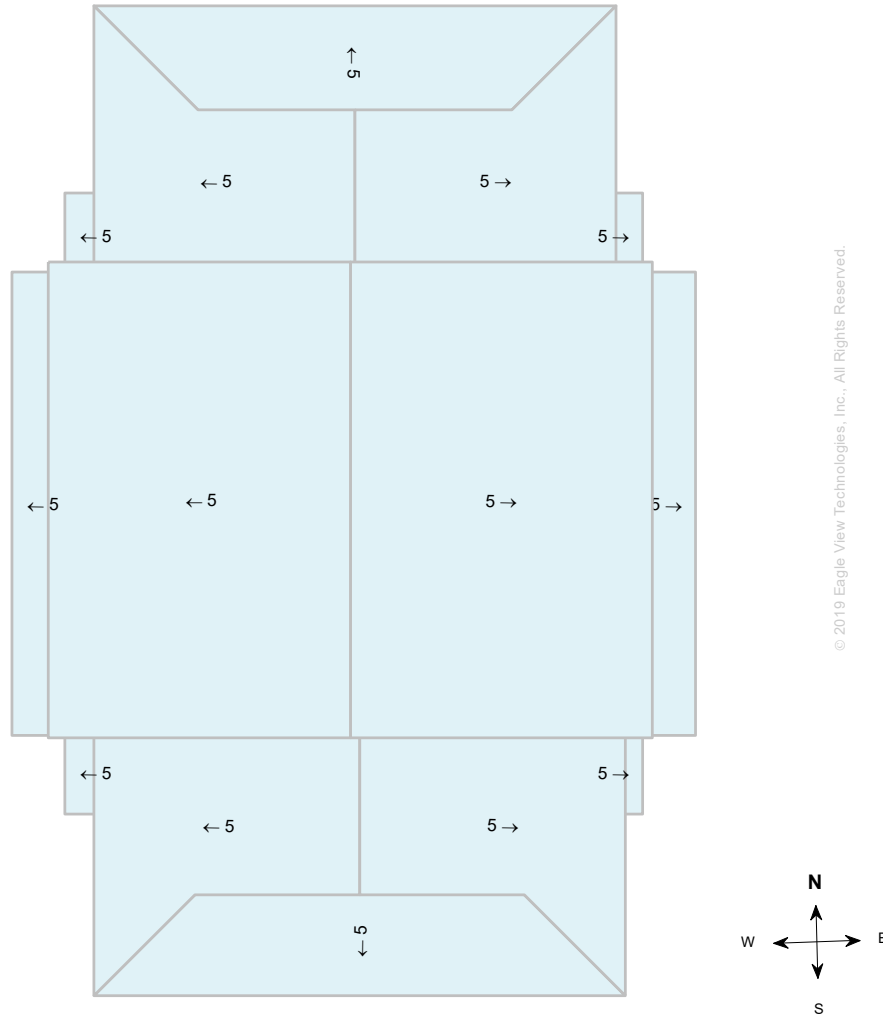
 Flashing = 166 ft
 Step flashing = 151 ft
 Parapets = 0 ft


© 2019 Eagle View Technologies, Inc., All Rights Reserved.

Note: This diagram contains segment lengths (rounded to the nearest whole number) over 5.0 Feet. In some cases, segment labels have been removed for readability. Plus signs preface some numbers to avoid confusion when rotated (e.g. +6 and +9).

PITCH DIAGRAM

Pitch values are shown in inches per foot, and arrows indicate slope direction. The predominant pitch on this roof is 5/12

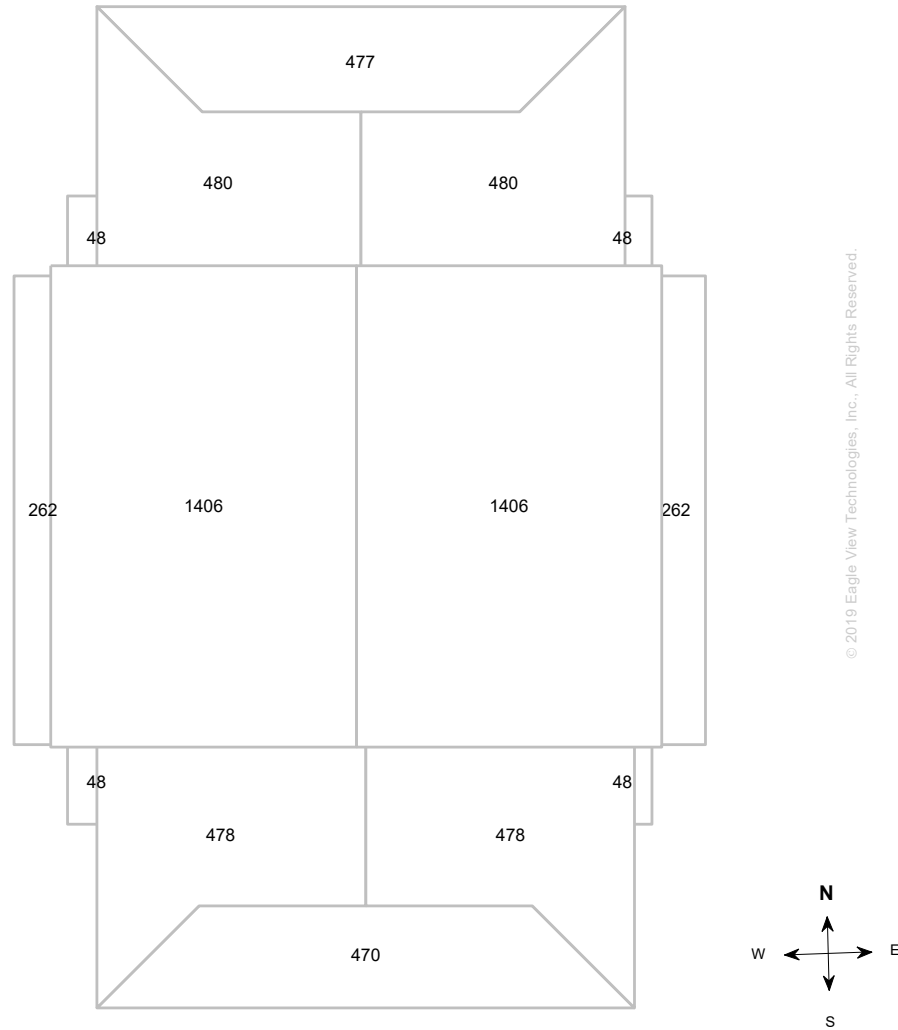


© 2019 Eagle View Technologies, Inc., All Rights Reserved.

Note: This diagram contains labeled pitches for facet areas larger than 20.0 square feet. In some cases, pitch labels have been removed for readability. Blue shading indicates a pitch of 3/12 and greater.

AREA DIAGRAM

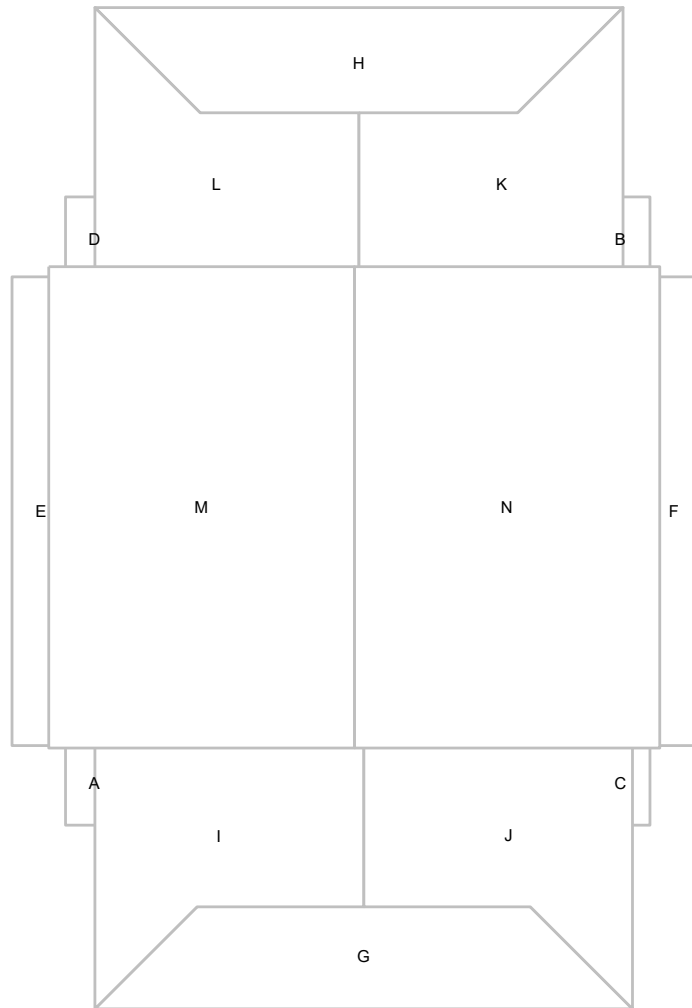
Total Area = 6,391 sq ft, with 14 facets.



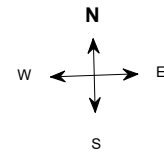
Note: This diagram shows the square feet of each roof facet (rounded to the nearest Foot). The total area in square feet, at the top of this page, is based on the non-rounded values of each roof facet (rounded to the nearest square foot after being totaled).

NOTES DIAGRAM

Roof facets are labeled from smallest to largest (A to Z) for easy reference.



© 2019 Eagle View Technologies, Inc. All Rights Reserved.



PENETRATIONS NOTES DIAGRAM

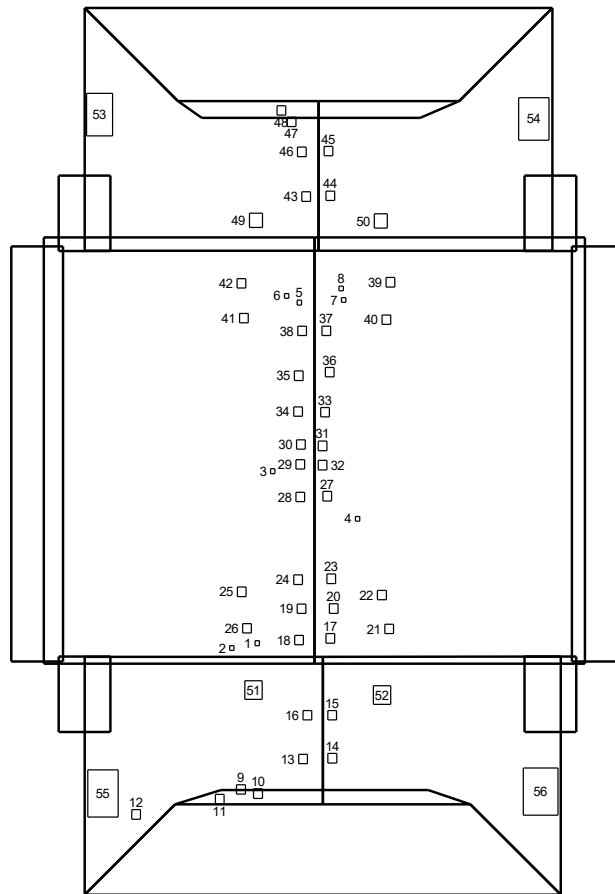
Penetrations are labeled from smallest to largest for easy reference.

Total Penetrations = 56

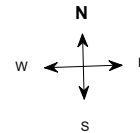
Total Penetrations Area = 122 sq ft

Total Penetrations Perimeter = 270 ft

Total Roof Area Less Penetrations = 6,269 sq ft



© 2019 Eagle View Technologies, Inc. All Rights Reserved.



REPORT SUMMARY

Areas per Pitch

Roof Pitches	5/12
Area (sq ft)	6390.9
% of Roof	100%

The table above lists each pitch on this roof and the total area and percent (both rounded) of the roof with that pitch.

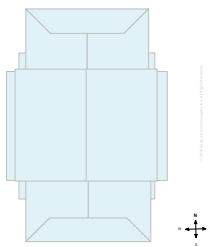
Waste Calculation Table

Waste %	0%	10%	12%	15%	17%	20%	22%
Area (sq ft)	6,391	7,030	7,158	7,350	7,477	7,669	7,797
Squares	63.9	70.3	71.6	73.5	74.8	76.7	78.0

This table shows the total roof area and squares (rounded up to the nearest decimal) based upon different waste percentages. The waste factor is subject to the complexity of the roof, individual roofing techniques and your experience. Please consider this when calculating appropriate waste percentages. Note that only roof area is included in these waste calculations. Additional materials needed for ridge, hip, valley, and starter lengths are not included.

Penetrations	1	2-8	9-48	49-50	51-52	53	54	55	56
Area (sq ft)	0.2	0.3	1	2.2	4	13.5	15.7	17.5	20
Perimeter (ft)	2	2	4	6	8	15	16	17	18

Any measured penetration smaller than 3.0x3.0 Feet may need field verification. Accuracy is not guaranteed. The total penetration area is not subtracted from the total roof area.



Total Roof Facets = 14
 Total Penetrations = 56

Lengths, Areas and Pitches

Ridges = 77 ft (3 Ridges)
 Hips = 58 ft (4 Hips)
 Valleys = 0 ft (0 Valleys)
 Rakes* = 239 ft (16 Rakes)
 Eaves/Starter** = 413 ft (14 Eaves)
 Drip Edge (Eaves + Rakes) = 652 ft (30 Lengths)
 Parapet Walls = 0 (0 Lengths)
 Flashing = 166 ft (8 Lengths)
 Step flashing = 151 ft (12 Lengths)
 Total Area = 6,391 sq ft
 Total Penetrations Area = 122 sq ft
 Total Roof Area Less Penetrations = 6,269 sq ft
 Total Penetrations Perimeter = 270 ft
 Predominant Pitch = 5/12

Property Location

Longitude = -93.5469611
 Latitude = 44.8735697

Notes

This was ordered as a commercial property. There were no changes to the structure in the past four years.

* Rakes are defined as roof edges that are sloped (not level).
 ** Eaves are defined as roof edges that are not sloped and level.

7231 Pontiac Cir, Chanhassen, MN 55317-9454

Report: 26808830

Online Maps

Online map of property

http://maps.google.com/maps?f=g&source=s_q&hl=en&geocode=&q=7231+Pontiac+Cir,Chanhassen,MN,55317-9454

Directions from ABC Supply Co. to this property

http://maps.google.com/maps?f=d&source=s_d&saddr=5130+Industrial+St,Maple+Plain,MN,55359-8004&daddr=7231+Pontiac+Cir,Chanhassen,MN,55317-9454